

2889 EAST 12TH AVENUE, VANCOUVER, BC



# RENFREW CENTRE



The Modern Shape of Work



# a distinct DESTINATION

At the heart of East Vancouver, Renfrew Centre offers a contemporary workplace with exceptional accessibility. Positioned next to Renfrew SkyTrain station, the 170,278-square-foot building pairs direct transit access with wellness-inspired amenities that support a more balanced workday. With efficient floor plates and modern architecture, Renfrew Centre is well positioned to support what comes next.

## 170,278 SF ACROSS 7 STORIES

### Iconic Curved Façade

WITH INTEGRATED SOLAR SHADING DESIGN

### Efficient Floor Plates

WITH ABUNDANT NATURAL LIGHT



### Built for Efficiency.

### Designed for Experience.

On-site retail includes Tim Hortons & Gong Cha

Great access to car share stalls, EV charging stations, and Renfrew SkyTrain Station

On-site amenities include fitness facility, bike storage, yoga classes, and rooftop beehives

Direct access to the Central Valley Greenway Bike Path - seamless bike access across Vancouver, Burnaby, and New Westminister





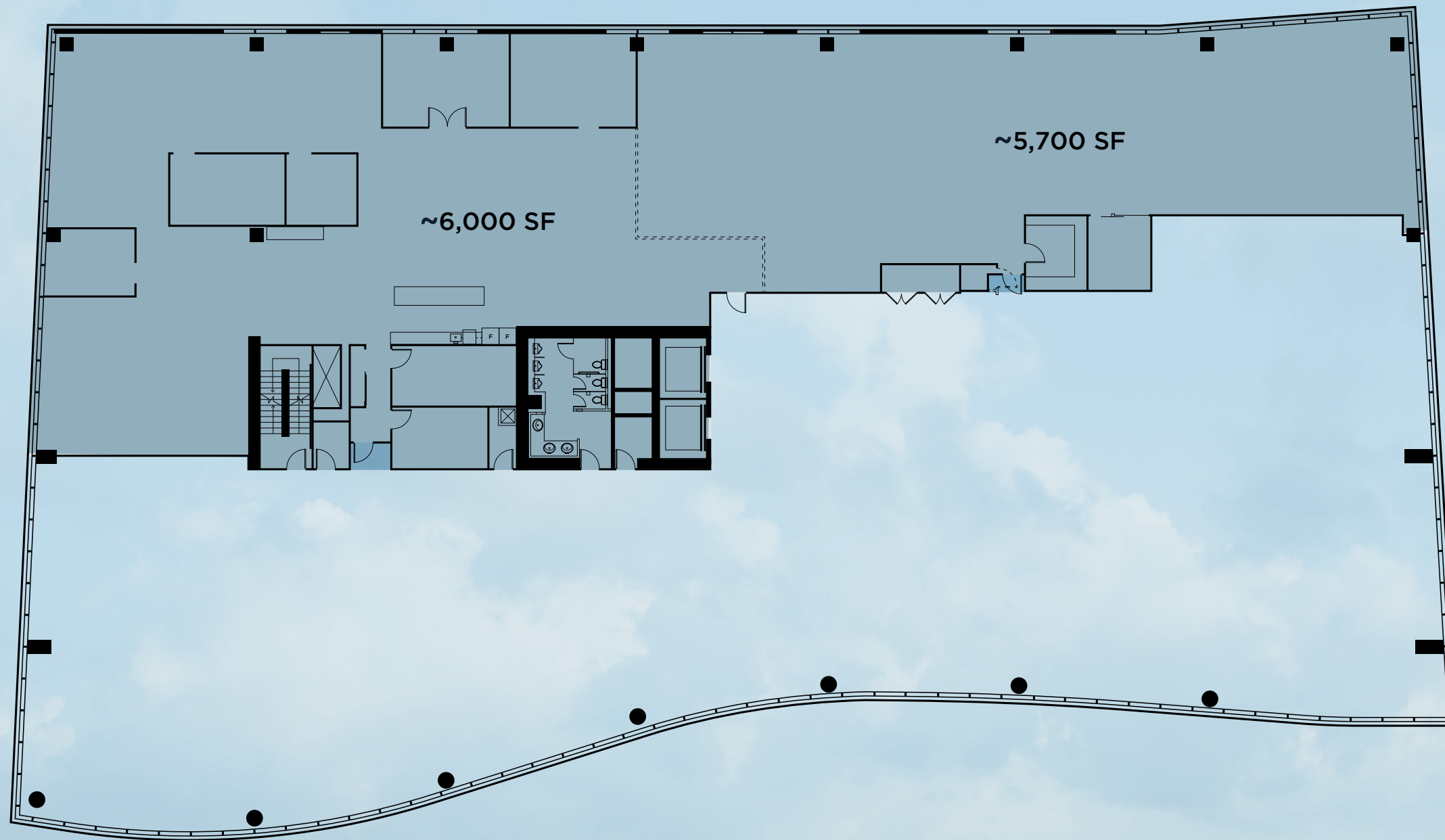
form meets

# FUNCTION

## 6<sup>th</sup> Floor

~11,700 SF Available for Lease

Renfrew Centre offers efficient floor plates designed to maximize natural light and support a modern workplace experience. Clean lines, a light colour palette and contemporary finishes create a polished environment that promotes focus throughout the day.





# rooted in WELLBEING

At Renfrew Centre, on-site amenities are designed to support both the workday and the world beyond it. Alongside fitness and convenient ground-floor offerings like Tim Hortons, this dynamic building is home to three rooftop beehives, housing approximately 31,500 bees. In partnership with an Urban Beekeeper, Renfrew's bees help pollinate the surrounding area, reinforcing the property's broader commitment to sustainability.

## On-site Amenities:

TIM HORTONS  
& GONG CHA

CAR SHARE  
STALLS

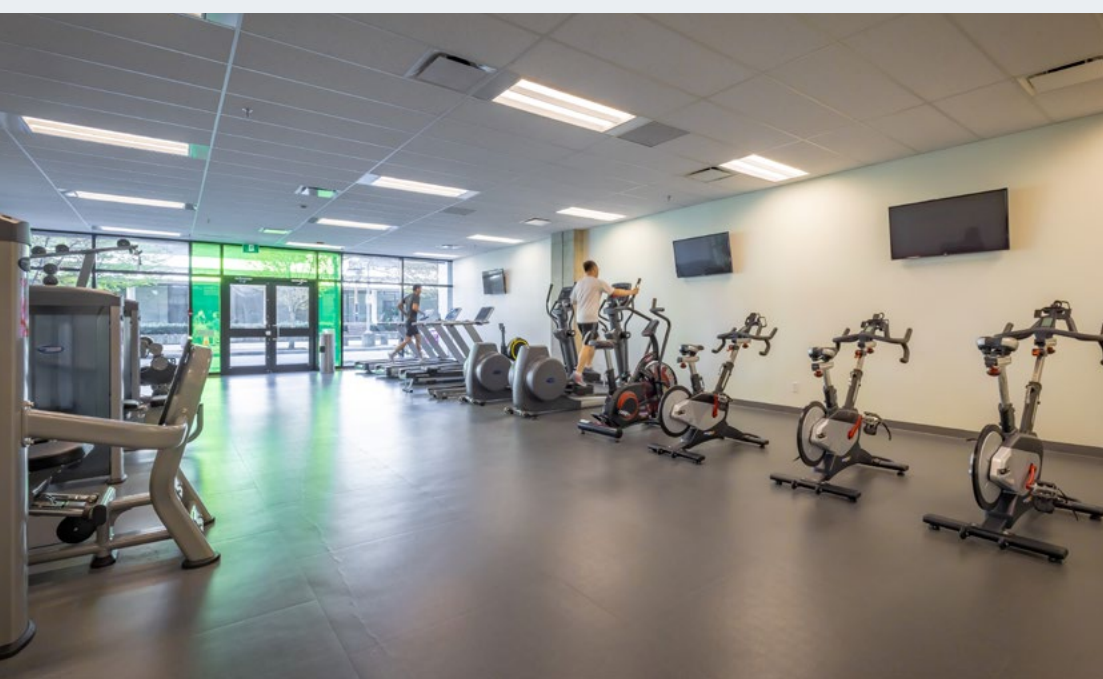
EV CHARGING  
STATIONS

YOGA  
CLASSES

FITNESS  
FACILITY,  
SHOWERS  
& LOCKERS

ROOFTOP  
BEEHIVES

BIKE  
STORAGE





more

# WITHIN REACH

Renfrew Centre places tenants in an area with dining, daily conveniences and green space all close by. Grab a quick lunch at Pokerrito, meet clients at La Piazza Dario or visit Walmart before heading home.

With a growing mix of neighborhood amenities surrounding the property, this East Vancouver location adds another layer of convenience to the workday and offers tenants more to experience beyond the office.

# 85

## WALK SCORE



### Dining:

- |                      |                       |
|----------------------|-----------------------|
| 1 A&W                | 16 McDonald's         |
| 2 Basil Garden       | 17 Mr. Sub            |
| 3 Big Fish Slushie   | 18 Pho Kitchen        |
| 4 Bon's Off Broadway | 19 Pho Nhuan          |
| 5 Boteco Brasil      | 20 Pizza Hut          |
| 6 Donair Affair      | 21 Prince Seafood     |
| 7 Enzo's Cafe        | 22 Shining Garden     |
| 8 Freshii            | 23 Subway             |
| 9 Freshslice Pizza   | 24 Subway             |
| 10 Golden Seafood    | 25 Sushi High         |
| 11 Golden Spring     | 26 Sushi Moon         |
| 12 Gong Cha          | 27 Timber Bistro      |
| 13 Got Pho           | 28 Trocadero Pizza    |
| 14 In & Out Donair   | 29 Vallarta's Mexican |
| 15 La Piazza Darlo   | 30 Yook Korean BBQ    |

### Retail:

- |                                    |                                  |
|------------------------------------|----------------------------------|
| 31 Bell Business Solutions         | 45 Nexinnovations                |
| 32 Biktrix Electric Bikes          | 46 Nt Garden Supply              |
| 33 Canuck Volleyball               | 47 Otis Canada                   |
| 34 Control-Tech                    | 48 Reliable Parts                |
| 35 Custom Golf Ball Printing       | 49 Renewal by Anderson           |
| 36 Direct Liquidation              | 50 RONA                          |
| 37 Dormez-vous                     | 51 Seacrates Expat               |
| 38 Econo-Wise Furnishings          | 52 Sleep Country                 |
| 39 Groundworks Construction Supply | 53 Source Office Furniture       |
| 40 Henley Home Furnishings         | 54 Source Office Furniture       |
| 41 JR Furniture                    | 55 Staples                       |
| 42 Viti Wine & Lager               | 56 The Brick                     |
| 43 Milore Sales                    | 57 The Connection Games & Comics |
| 44 MyGardenBag                     | 58 Trail Appliances              |

# positioned with PURPOSE

Renfrew Centre is positioned next to Renfrew SkyTrain Station, giving tenants direct access to rapid transit in one of East Vancouver's most connected locations. With access to the Central Valley Greenway, plus on-site car share stalls and EV charging stations, the connected building supports a convenient arrival for tenants, clients and visitors.

## Parking:

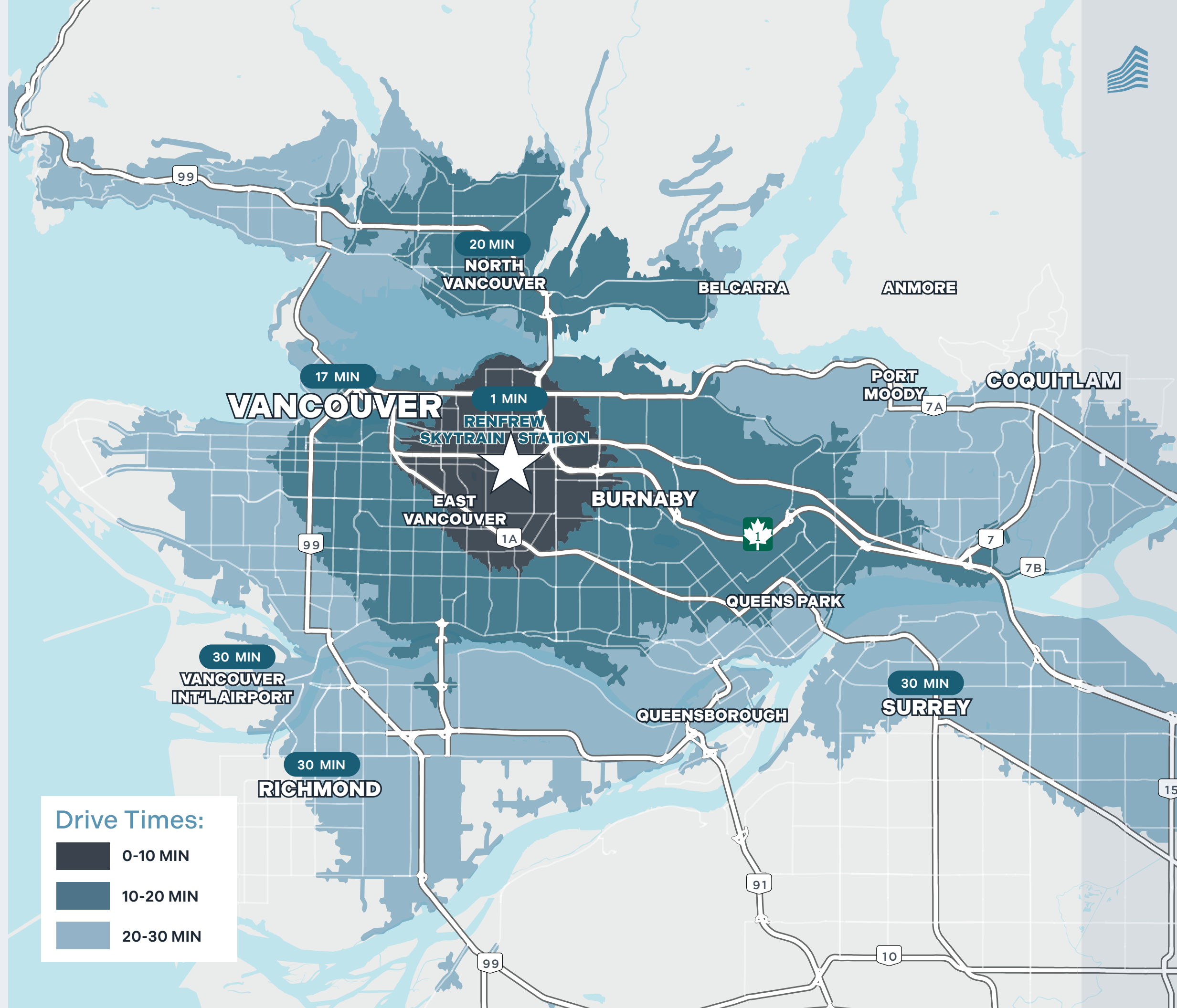
**Random:** \$100 per stall per month + taxes

**Reserved:** \$125 per stall per month + taxes

2.5 stalls per 1,000 SF leased

## Drive Times:

- 1 MIN** Renfrew SkyTrain Station
- 17 MIN** Downtown Vancouver
- 20 MIN** North Vancouver
- 30 MIN** Richmond
- 30 MIN** Surrey
- 30 MIN** Vancouver International Airport





# a day at RENFREW CENTRE

From morning coffee to client dinners and everything in between, Renfrew Centre makes it easy to move through the day.



Grab a coffee at Tim Hortons and arrive with ease, just steps from Renfrew SkyTrain Station.



Start the day in a bright, modern office environment designed to support focus and comfort.



Grab a quick lunch at Quesada Burritos & Tacos before your next meeting.



Fit in an on-site yoga class at Oxygen Yoga & Fitness Renfrew for a change of pace before the day winds down.



Head to Boteco Brasil Restaurant for happy hour or make an easy trip home from one of East Vancouver's most connected office locations.



# RENFREW CENTRE

## ROGER LEGGATT

PERSONAL REAL ESTATE CORPORATION

Executive Vice President

604 640 5882

[roger.leggatt@ca.cushwake.com](mailto:roger.leggatt@ca.cushwake.com)

## MAX ZESSEL

PERSONAL REAL ESTATE CORPORATION

Senior Vice President

604 640 5824

[max.zessel@ca.cushwake.com](mailto:max.zessel@ca.cushwake.com)

## ETHAN REGAN

Associate

604 902 4649

[ethan.regan@ca.cushwake.com](mailto:ethan.regan@ca.cushwake.com)



**CUSHMAN &  
WAKEFIELD**



©2026 Cushman & Wakefield. All rights reserved. The information contained in this communication is strictly confidential. This information has been obtained from sources believed to be reliable but has not been verified. NO WARRANTY OR REPRESENTATION, EXPRESS OR IMPLIED, IS MADE AS TO THE CONDITION OF THE PROPERTY (OR PROPERTIES) REFERENCED HEREIN OR AS TO THE ACCURACY OR COMPLETENESS OF THE INFORMATION CONTAINED HEREIN, AND SAME IS SUBMITTED SUBJECT TO ERRORS, OMISSIONS, CHANGE OF PRICE, RENTAL OR OTHER CONDITIONS, WITHDRAWAL WITHOUT NOTICE, AND TO ANY SPECIAL LISTING CONDITIONS IMPOSED BY THE PROPERTY OWNER(S). ANY PROJECTIONS, OPINIONS OR ESTIMATES ARE SUBJECT TO UNCERTAINTY AND DO NOT SIGNIFY CURRENT OR FUTURE PROPERTY PERFORMANCE. COE-PM-West-04.27.2026