

THE FIFTY

50 / ST. CLAIR AVENUE EAST

FOR LEASE

Premier Boutique
Office Space



THE FIFTY

50 ST. CLAIR AVENUE EAST

Welcome to
50 St. Clair Avenue East

Located in the heart of Toronto's prestigious Yonge-St. Clair district, The Fifty is surrounded by one of the city's most established and affluent neighbourhoods. This vibrant, mixed use corridor is defined by a strong daytime office population, high density residential towers, and an upscale demographic with exceptional purchasing power. The area offers immediate access to the TTC subway, major arterial roads, and a refined mix of shops, restaurants, professional services, and amenities. Anchored by a blend of long standing institutions and modern developments, Yonge-St. Clair continues to be a sought after destination for businesses seeking stability, visibility, and a premium address.



Available Suites

Lower Level: 1,613 SF
2nd Floor: 2,495 SF
3rd Floor: 2,502 SF
4th Floor: 2,503 SF

Net Rent: Call Agents
Additional Rent: \$14.69 (2026 est.) + Utilities
Parking: Available

Property Highlights

BUILDING & DESIGN FEATURES

- **Full-Floor Model Suite:** High-end, move-in-ready suites occupying entire floors. Includes private elevator access for maximum security and a dedicated brand presence.
- **Modernized Professional Image:** A recently renovated lobby provides a contemporary, sophisticated first impression for clients and staff.
- **Boutique Experience:** An intimate, prestigious alternative to dense downtown towers, offering personalized service and a quiet, professional atmosphere.

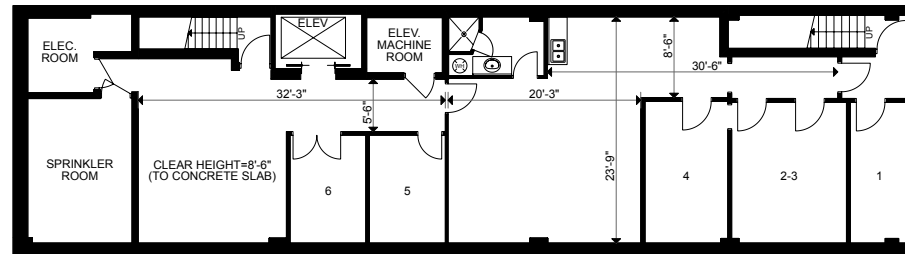
UNMATCHED TRANSIT ACCESS

- **Subway Connectivity:** Located directly adjacent to St. Clair Station (TTC Line 1), offering a seamless commute to the Financial District and North York.
- **Surface Transit:** Immediate access to the 512 St. Clair streetcar for effortless east-west travel across Midtown.
- **Cyclist-Friendly:** Situated near major bike routes and the Beltline Trail, ideal for active commuters.

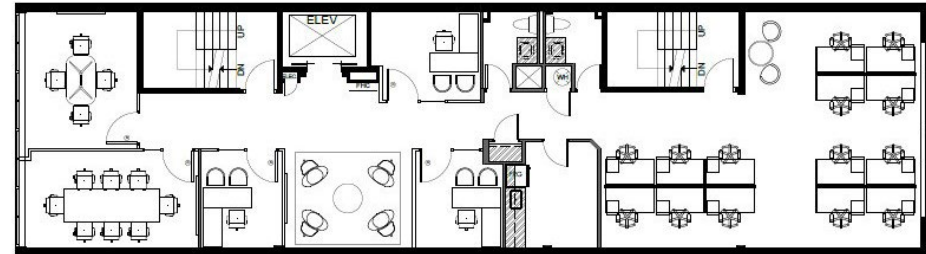
PRIME LOCAL AMENITIES

- **Premier Dining & Coffee:** Steps from upscale staples like CIBO Wine Bar, Capocaccia, and Barnsteiner's, plus quick-service favorites like Impact Kitchen and Mary Be Kitchen.
- **Retail Essentials:** Effortless "after-work" errands with Loblaws, LCBO, and St. Clair Centre within a one-block radius.
- **Banking & Services:** Proximity to all major Canadian financial institutions, Canada Post, and local pharmacies.
- **Wellness & Greenspace:** Immediate access to the Badminton & Racquet Club, GoodLife Fitness, and David A. Balfour Park for midday breaks or outdoor meetings.

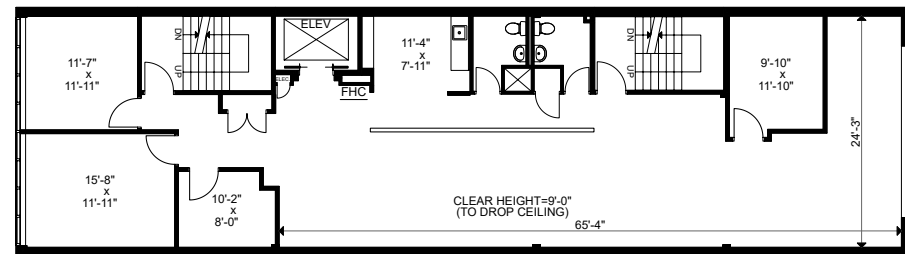
Floor Plans



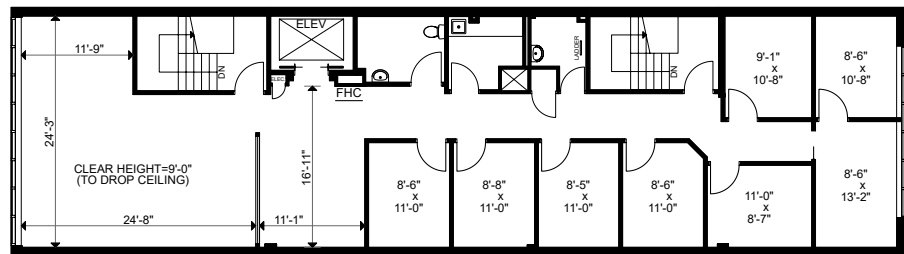
Lower Level: 1,613 SF



Model Suite: 2,495 SF



3rd Floor: 2,502 SF



4th Floor: 2,503 SF

Amenity Map





THE FIFTY

50 / ST. CLAIR AVENUE EAST

Lauren Luchini*

Vice President

+1 416 455 5824

lauren.luchini@cushwake.com

Alan Rawn*

Senior Vice President

+1 647 330 3045

alan.rawn@cushwake.com

Brendan Shea*

Senior Associate

+1 905 501 6426

brendan.shea@cushwake.com

161 Bay Street, Suite 1500 | P.O. Box 602 | Toronto, ON M5J 2S1 | Canada | cushmanwakefield.com

©2026 Cushman & Wakefield ULC, Brokerage. All rights reserved. The information contained in this communication is strictly confidential. This information has been obtained from sources believed to be reliable but has not been verified. NO WARRANTY OR REPRESENTATION, EXPRESS OR IMPLIED, IS MADE AS TO THE CONDITION OF THE PROPERTY (OR PROPERTIES) REFERENCED HEREIN OR AS TO THE ACCURACY OR COMPLETENESS OF THE INFORMATION CONTAINED HEREIN, AND SAME IS SUBMITTED SUBJECT TO ERRORS, OMISSIONS, CHANGE OF PRICE, RENTAL OR OTHER CONDITIONS, WITHDRAWAL WITHOUT NOTICE, AND TO ANY SPECIAL LISTING CONDITIONS IMPOSED BY THE PROPERTY OWNER(S). ANY PROJECTIONS, OPINIONS OR ESTIMATES ARE SUBJECT TO UNCERTAINTY AND DO NOT SIGNIFY CURRENT OR FUTURE PROPERTY PERFORMANCE.
PD-195895-V8 *Sales Representative