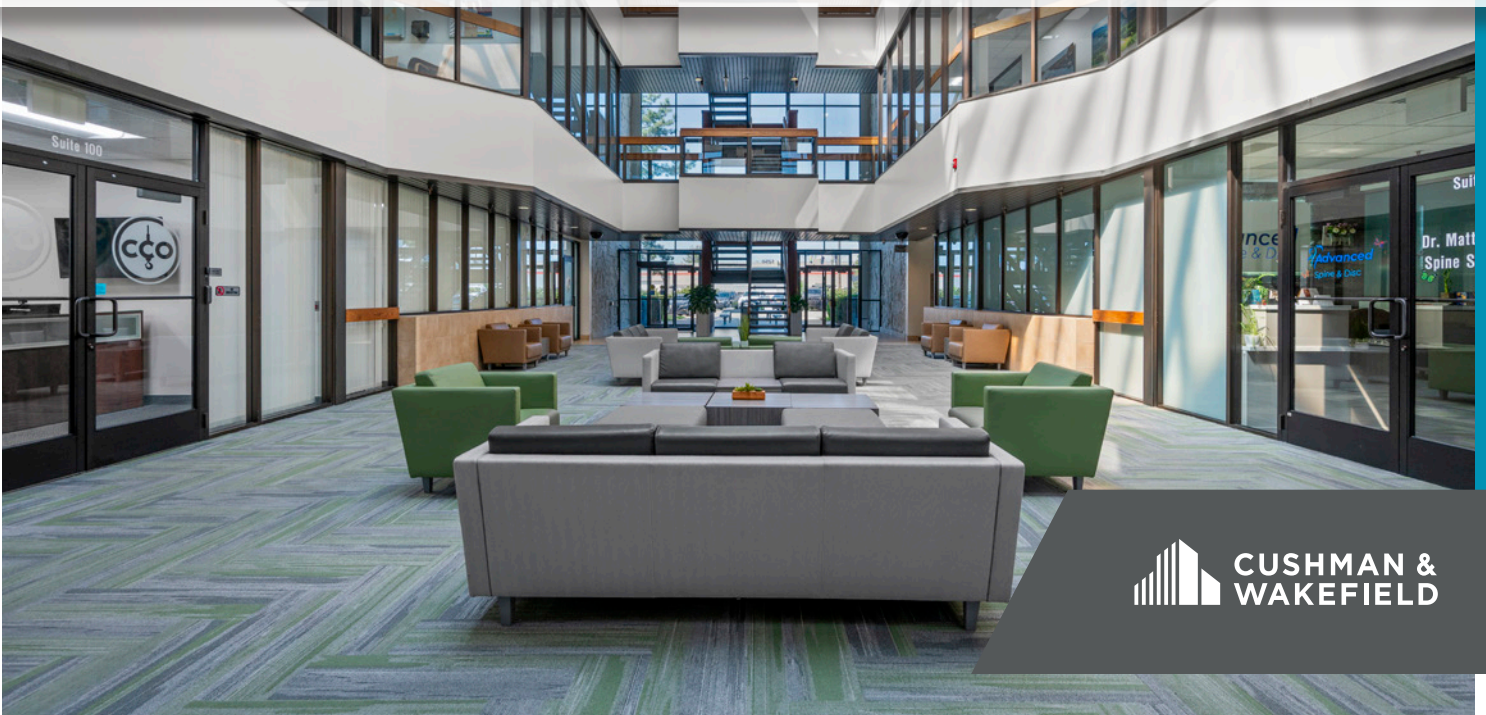




## THE ATRIUM BUILDING

# 5250 COMMERCE DRIVE

MURRAY, UTAH

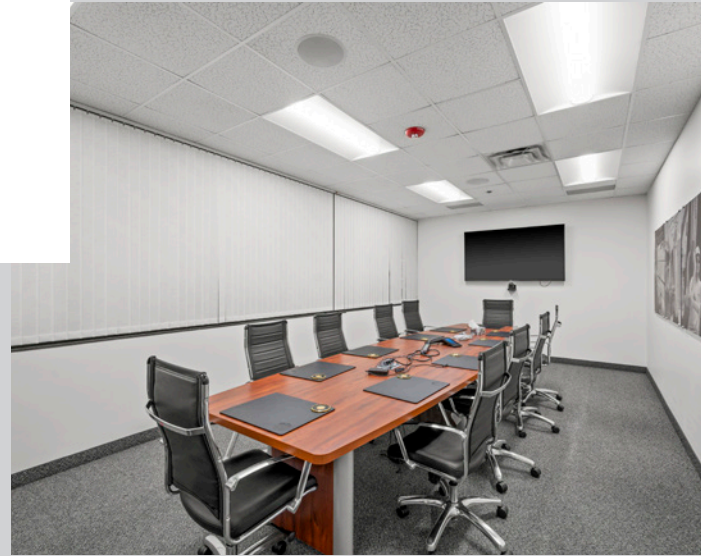


FOR LEASE

# 5250 COMMERCE DRIVE

## Property Highlights

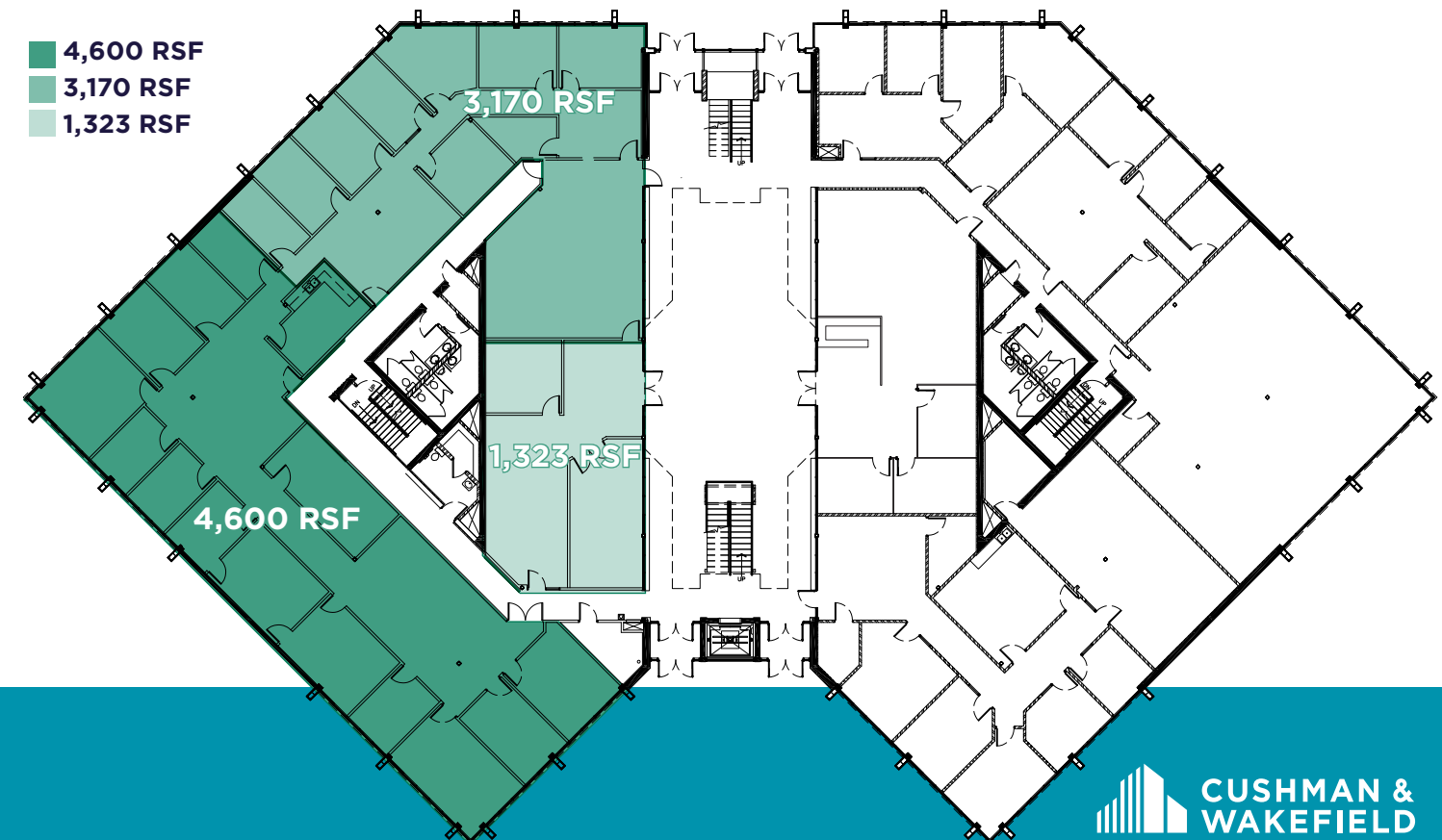
- Flexible suite options from 1,323 RSF - 10,431 RSF available
- Rate: \$22.00 per square foot, full-service gross
  - Atrium with abundant natural light
  - Food truck access
  - Professional property management
  - Easy access to I-15



### FIRST FLOOR: EXISTING BUILD-OUT



### FIRST FLOOR: SAMPLE DEMISE OPTIONS



**Melina Miramontes**  
Director  
D +1 801 303 5435 M +1 801 750 4701  
melina.miramontes@cushwake.com

**Jesse Mangum**  
Managing Director  
D +1 801 303 5547 M +1 801 440 9787  
jesse.mangum@cushwake.com

170 South Main Street, Suite 1600  
Salt Lake City, UT 84101  
+1 801 322 2000  
cushmanwakefield.com



FOR LEASE

# 5250 COMMERCE DRIVE

MURRAY, UTAH



**Melina Miramontes**

Director

D +1 801 303 5435 M +1 801 750 4701

melina.miramontes@cushwake.com

**Jesse Mangum**

Managing Director

D +1 801 303 5547 M +1 801 440 9787

jesse.mangum@cushwake.com



**CUSHMAN & WAKEFIELD**