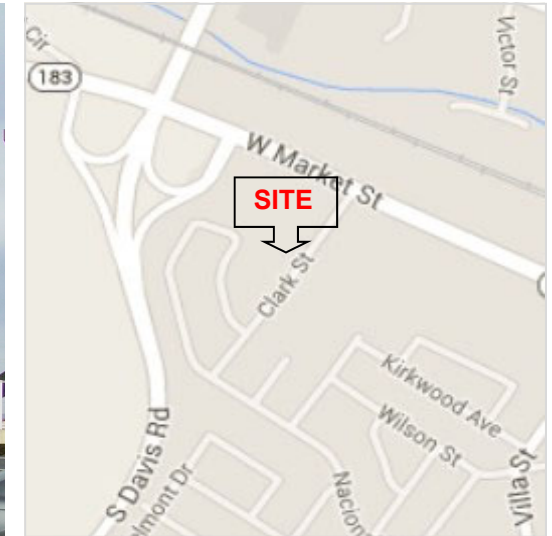


**FOR LEASE**

**40 Clark Street**

Salinas, California



## OFFICE & WAREHOUSE SPACE FOR LEASE

### Available:

- ◆ Unit D - Approximately 2,292 SF (992 SF office + 1,300 SF warehouse)
- ◆ Unit E - Approximately 2,292 SF (992 SF office + 1,300 SF warehouse)

### Property Overview:

- ◆ Gated Rear Access
- ◆ Incubator style R&D/Warehouse Project
- ◆ Newer improvements
- ◆ Convenient Location
- ◆ Tenant is responsible for PG&E, phone, internet, interior janitorial and alarm

**Lease Price \$1.25 PSF, Gross**

**Greg Findley**  
Managing Director  
+1 831 755 1639  
greg.findley@cushwake.com

**Michael Bassetti, CCIM**  
Director  
+1 831 737 1124  
michael.bassetti@cushwake.com

**Leticia Bugarin**  
Senior Associate  
+1 831 755 1646  
leticia.bugarin@cushwake.com

328 B Main Street  
Salinas, CA 93901  
T: +1 831 449 8000  
cushmanwakefield.com

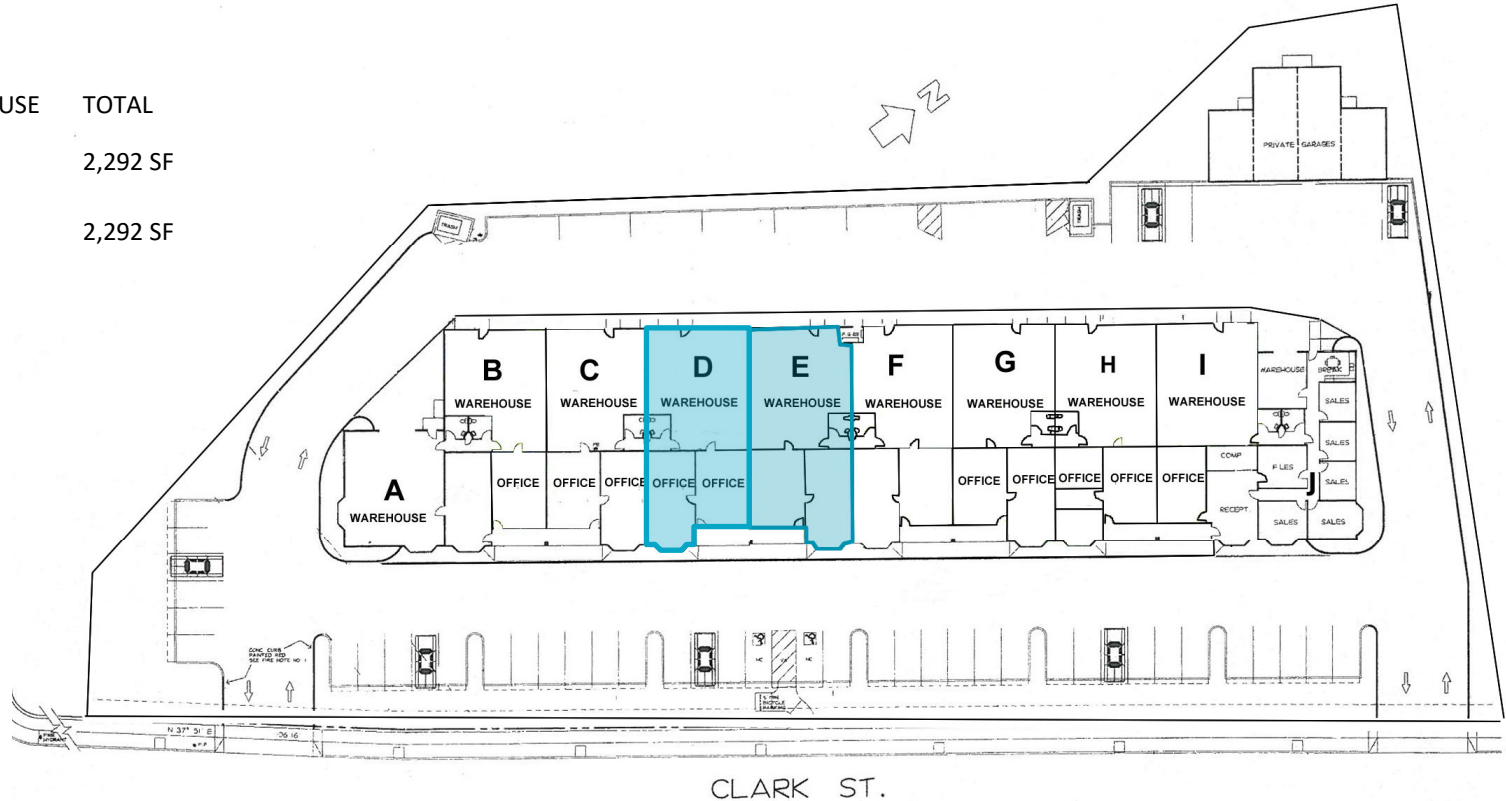
**FOR LEASE**

**40 Clark Street**  
Salinas, California



**SITE PLAN**

UNIT	OFFICE	WAREHOUSE	TOTAL
D	992 SF	1,300 SF	2,292 SF
E	992 SF	1,300 SF	2,292 SF



For more information, contact:

**Greg Findley**  
Managing Director  
+1 831 755 1639  
greg.findley@cushwake.com  
LIC #01170453

**Michael Bassetti, CCIM**  
Director  
+1 831 737 1124  
michael.bassetti@cushwake.com  
LIC #01422049

**Leticia Bugarin**  
Senior Associate  
+1 831 755 1646  
leticia.bugarin@cushwake.com  
LIC #01978668

328 B Main Street  
Salinas, CA 93901  
T: +1 831.449.8000  
F: +1 831 596 0314  
cushmanwakefield.com

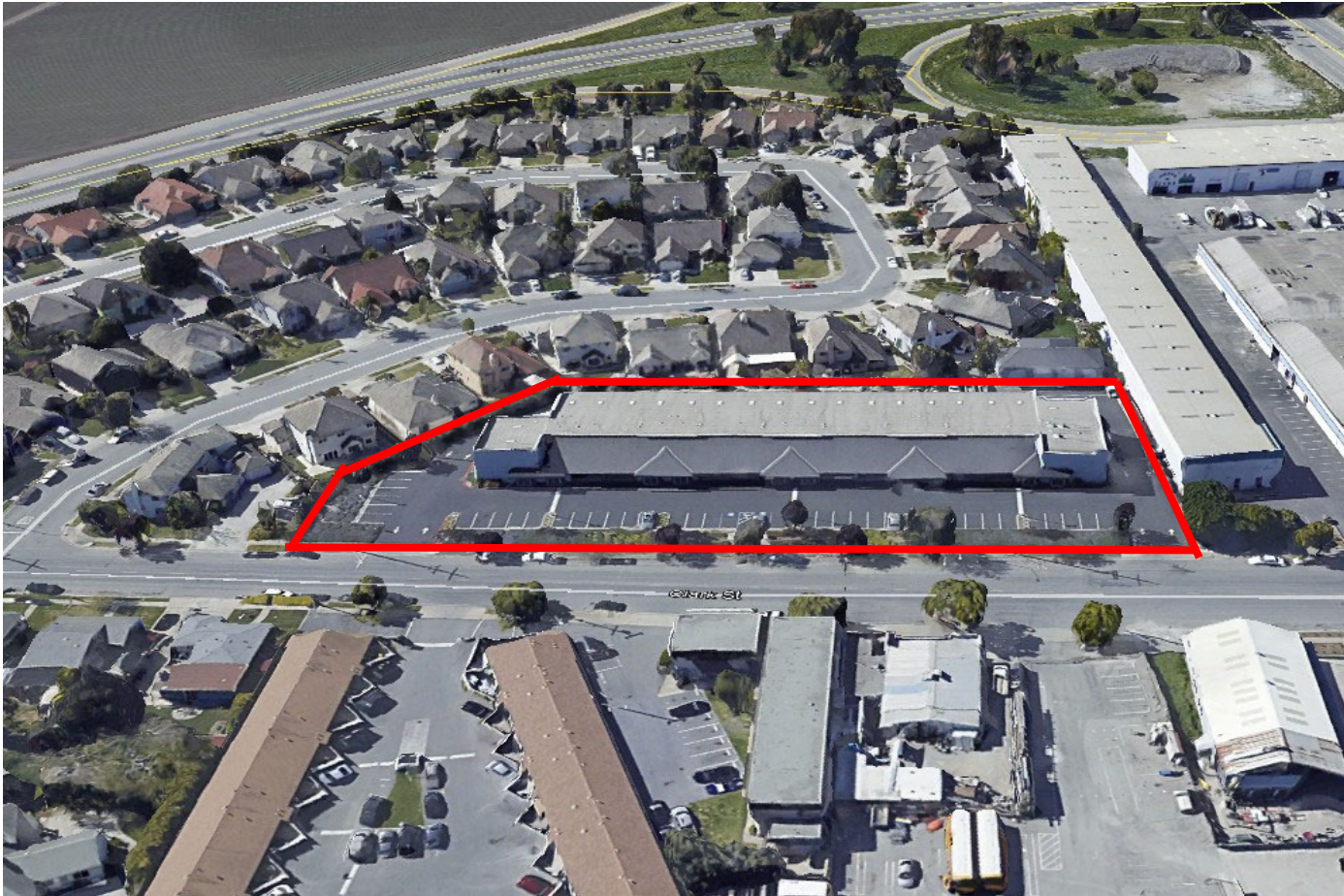
Cushman & Wakefield Copyright 2015. The information contained herein was lawfully obtained from sources we consider reliable. Cushman & Wakefield is not responsible and expressly disclaims all liability, for errors, omissions, prior sales, withdrawal from the market or change in price. Seller (or Lessor, as the case may be) and broker make no representation as to the environmental condition of the property and recommend Purchaser's (or Lessee's) independent investigation.

**FOR LEASE**

**40 Clark Street**  
Salinas, California



**AERIAL VIEW**



For more information, contact:

**Greg Findley**  
Managing Director  
+1 831 755 1639  
greg.findley@cushwake.com  
LIC #01170453

**Michael Bassetti, CCIM**  
Director  
+1 831 737 1124  
michael.bassetti@cushwake.com  
LIC #01422049

**Leticia Bugarin**  
Senior Associate  
+1 831 755 1646  
leticia.bugarin@cushwake.com  
LIC #01978668

328 B Main Street  
Salinas, CA 93901  
T: +1 831.449.8000  
F: +1 831 596 0314  
cushmanwakefield.com

Cushman & Wakefield Copyright 2015. The information contained herein was lawfully obtained from sources we consider reliable. Cushman & Wakefield is not responsible and expressly disclaims all liability, for errors, omissions, prior sales, withdrawal from the market or change in price. Seller (or Lessor, as the case may be) and broker make no representation as to the environmental condition of the property and recommend Purchaser's (or Lessee's) independent investigation.