

FOR LEASE

MEDICAL SPACE AVAILABLE



672 E Romie Lane

Salinas, CA 93901



PROPERTY HIGHLIGHTS

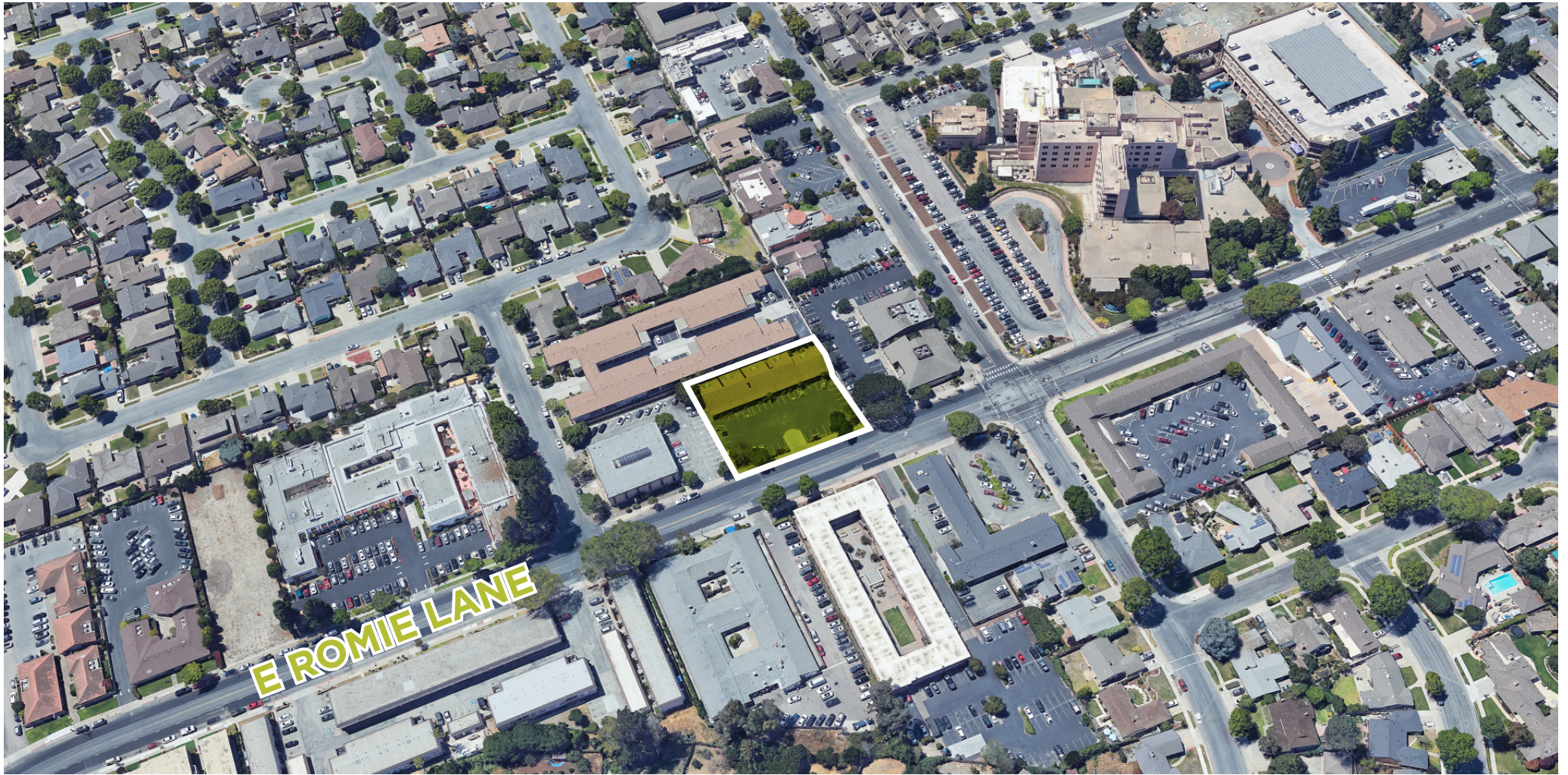
672 E Romie Lane

Suite Details

- ± 1,150 SF Office Space
- Reception Area
- Lobby Area
- Nurses Station
- 1 Doctor's office
- 3 Exam Rooms
- Lab Room
- 2 Restrooms
- Laundry Hookups

Lease Terms

- \$2.50 PSF modified gross
- Tenant pays all utilities;
Fixed sewer fee of \$32/month



CONTACT INFORMATION

Greg Findley
+1 831 755 1639
greg.findley@cushwake.com
LIC #01170453

Leticia Bugarin
+1 831 682 5690
leticiabugarin@atlaspremierproperties.com
LIC #01978668

