

BERING/ZANKER BUSINESS PARK

±7,120 SF - ±16,400 SF AVAILABLE | SAN JOSE, CA

For more information, please contact:

Steve Pace
P +1 408 615 3419
steve.pace@cushwake.com
LIC #00817396

Dan Hollingsworth
P +1 408 615 3431
dan.hollingsworth@cushwake.com
LIC #01117716

Tiana Dampier
P +1 408 436 3680
tiana.dampier@cushwake.com
LIC #02191012



Current Availabilities

- 2365 Bering Dr: ±7,120 SF
- 2333 Zanker Rd: ±16,400 SF

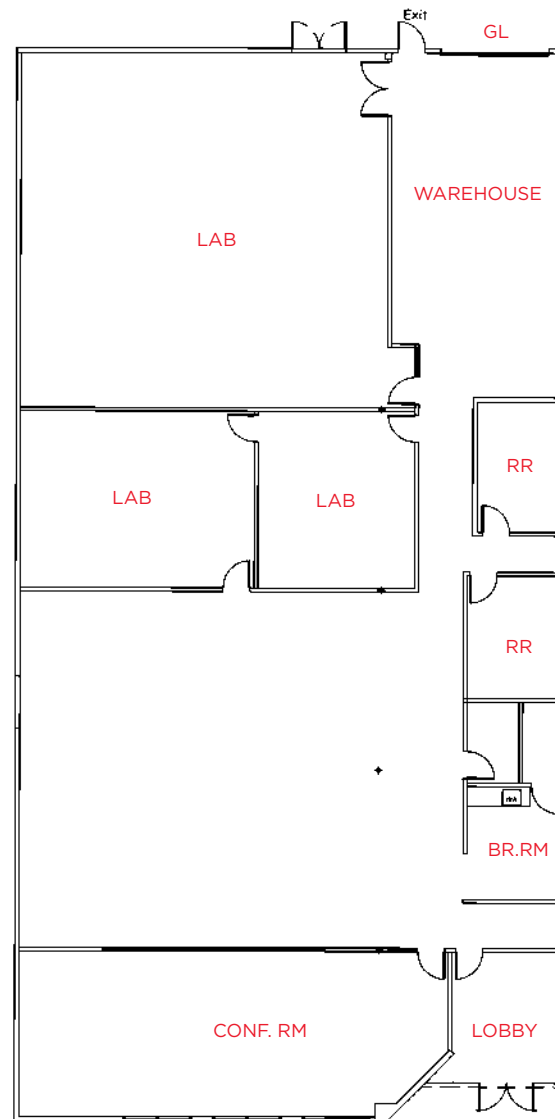
Highlights

- High Image North San Jose location
- 4/1,000 Parking
- Easy Access to Highways 101 & 880
- Walk to Light Rail Station
- Lab, Warehouse, Open Office, Privates and Conference Space



2365 BERING DRIVE | San Jose, California

Floor Plan | ±7,120 SF



- **Power:**

- 1000 Amps 120/208 Volts 3 Phase 4 Wire
- 200 Amps 277/480 Volts 3 Phase 4 Wire

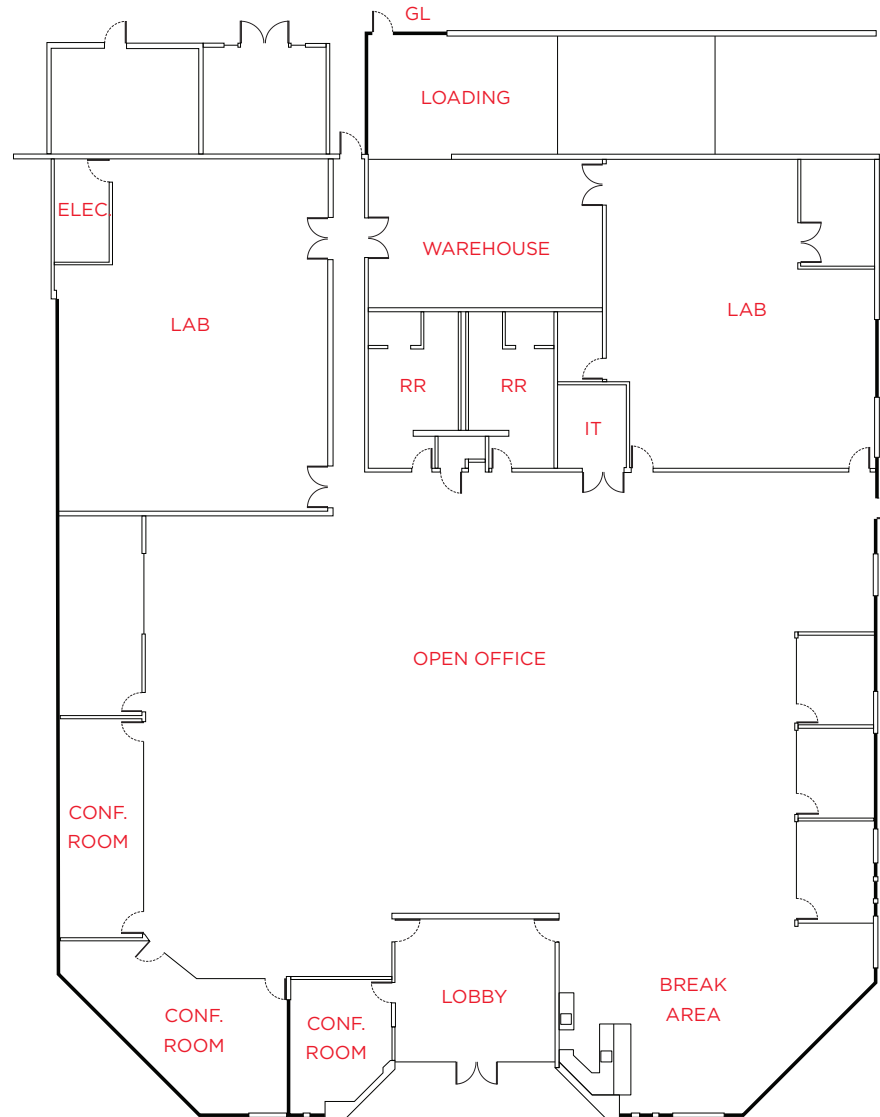
- **HVAC**

- 80 Tons HVAC
- Of Which 60 Tons is Cooling Only

- **Description**

- Conference Room, Labs, Break Room, Warehouse, Grade Level Door

Floor Plan | ±16,400 SF



- **Power:**
800 Amps @ 277/480 Volts
3 Phase 4 Wire
- **HVAC**
100% / 9 Units Totaling Approx./
77 Tons of Cooling
- **Clear Height 14'**
- **Description**
Open Office, Privates,
Conference Rooms,
Lobby, Break Area, Lab/
Mfg/Warehouse, Grade
Level Door, End Unit

BERING / ZANKER BUSINESS PARK

San Jose, California

Public Transit and Amenities

