



FOR LEASE

ARLINGTON SQUARE

3300 WASHTENAW AVENUE
ANN ARBOR, MI 48104



 CUSHMAN &
WAKEFIELD



Second floor office space available



Across the street from abundant retail including Arborland Center, Whole Foods, Barnes & Noble, Qdoba & many more



Underground parking available for monthly rental



High visibility with average 52,000 daily traffic count at the corner of Washtenaw Avenue and Huron Parkway. Building facade signage available facing both streets. Pylon signage also available



Immediate proximity to US-23



CONTACT

Kyle Passage

Director
+1 248 358 6113
kyle.passage@cushwake.com

Tony Avendt

Executive Director
+1 248 358 6115
tony.avendt@cushwake.com

27777 Franklin Road, Suite 1050
Southfield, Michigan 48034
Main +1 248 358 6100
cushmanwakefield.com

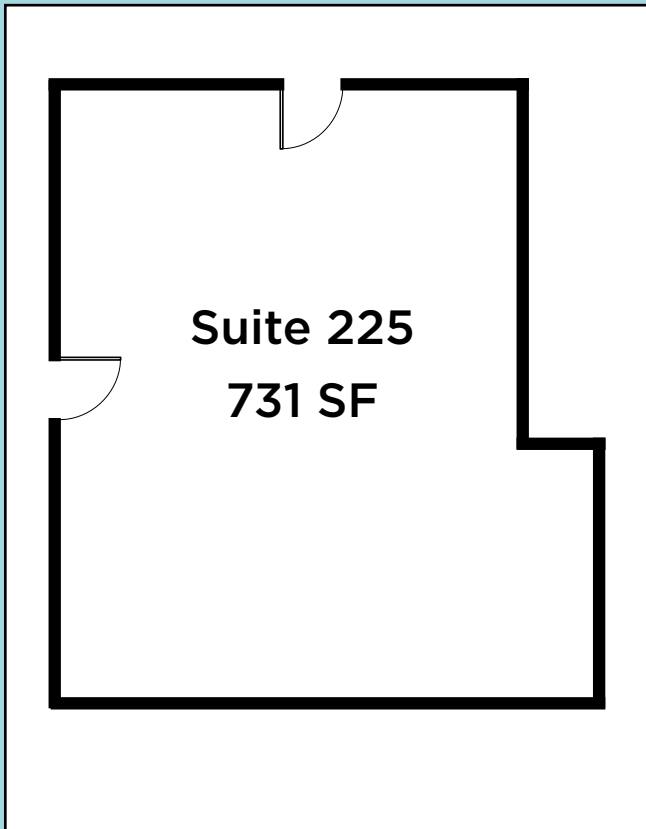
FOR LEASE

ARLINGTON SQUARE

3300 WASHTENAW AVENUE
ANN ARBOR, MI 48104

SUITE 225

731 RSF office space
\$19.50/SF + Utilities



CONTACT

Kyle Passage

Director
+1 248 358 6113
kyle.passage@cushwake.com

Tony Avendt

Executive Director
+1 248 358 6115
tony.avendt@cushwake.com

27777 Franklin Road, Suite 1050
Southfield, Michigan 48034
Main +1 248 358 6100
cushmanwakefield.com

FOR LEASE

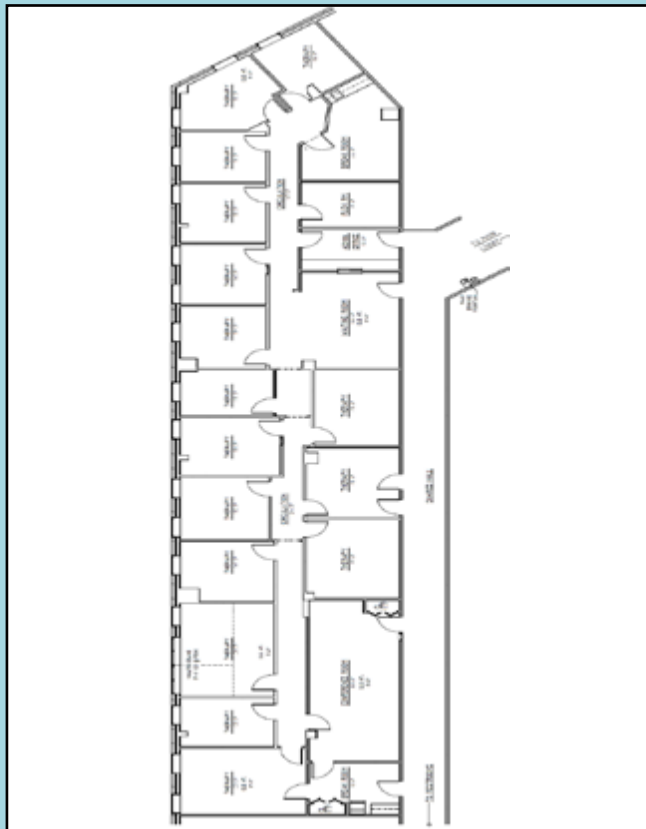
ARLINGTON SQUARE

3300 WASHTENAW AVENUE
ANN ARBOR, MI 48104

SUITE 260

2,579 - 5,159 RSF office space
\$19.50/SF + Utilities

Available July 2026



CONTACT

Kyle Passage

Director
+1 248 358 6113
kyle.passage@cushwake.com

Tony AvenDt

Executive Director
+1 248 358 6115
tony.avenDt@cushwake.com

27777 Franklin Road, Suite 1050
Southfield, Michigan 48034
Main +1 248 358 6100
cushmanwakefield.com

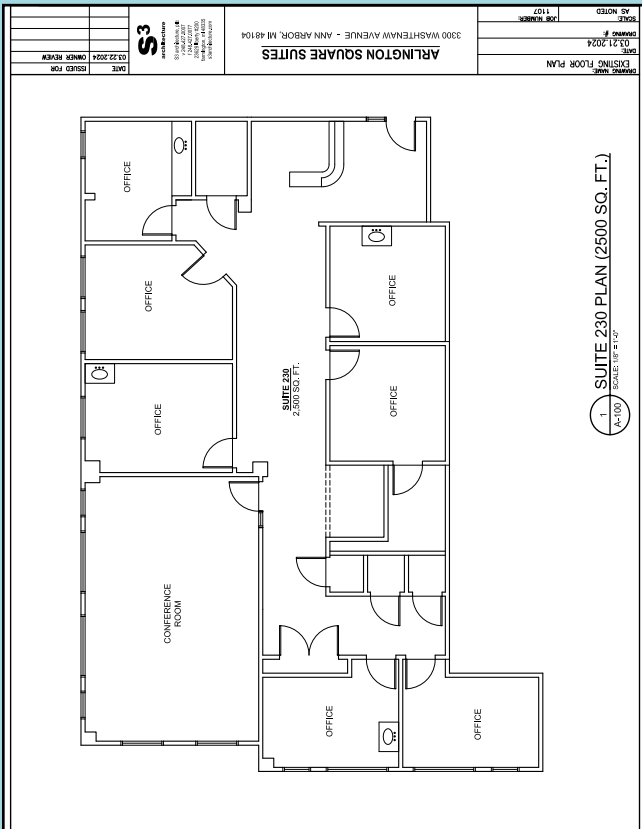
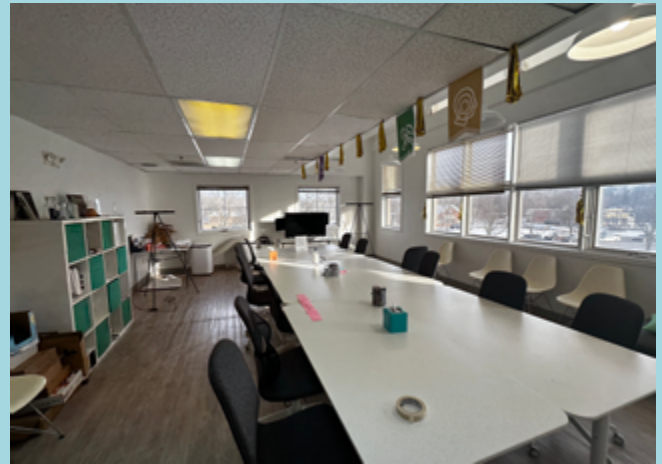
FOR LEASE

ARLINGTON SQUARE

3300 WASHTENAW AVENUE
ANN ARBOR, MI 48104

SUITE 280

2,804 RSF office space
\$19.50/SF + Utilities



CONTACT

Kyle Passage

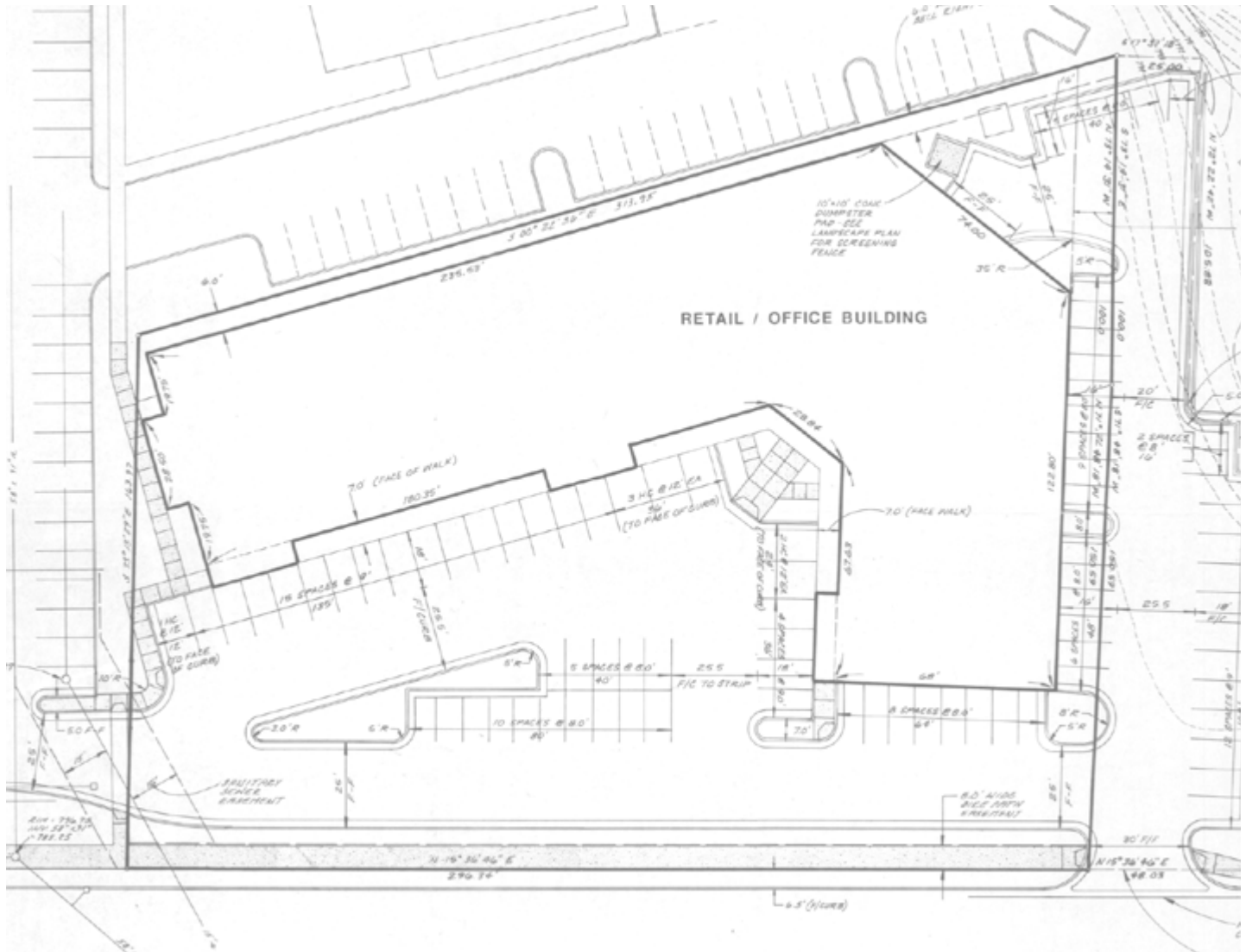
Director
+1 248 358 6113
kyle.passage@cushwake.com

Tony Avendt

Executive Director
+1 248 358 6115
tony.avendt@cushwake.com

27777 Franklin Road, Suite 1050
Southfield, Michigan 48034
Main +1 248 358 6100
cushmanwakefield.com

SITEPLAN



CONTACT

Kyle Passage

Director
+1 248 358 6113
kyle.passage@cushwake.com

Tony Avendt

Executive Director
+1 248 358 6115
tony.avendt@cushwake.com

27777 Franklin Road, Suite 1050
Southfield, Michigan 48034
Main +1 248 358 6100
cushmanwakefield.com

AERIAL



CONTACT

Kyle Passage

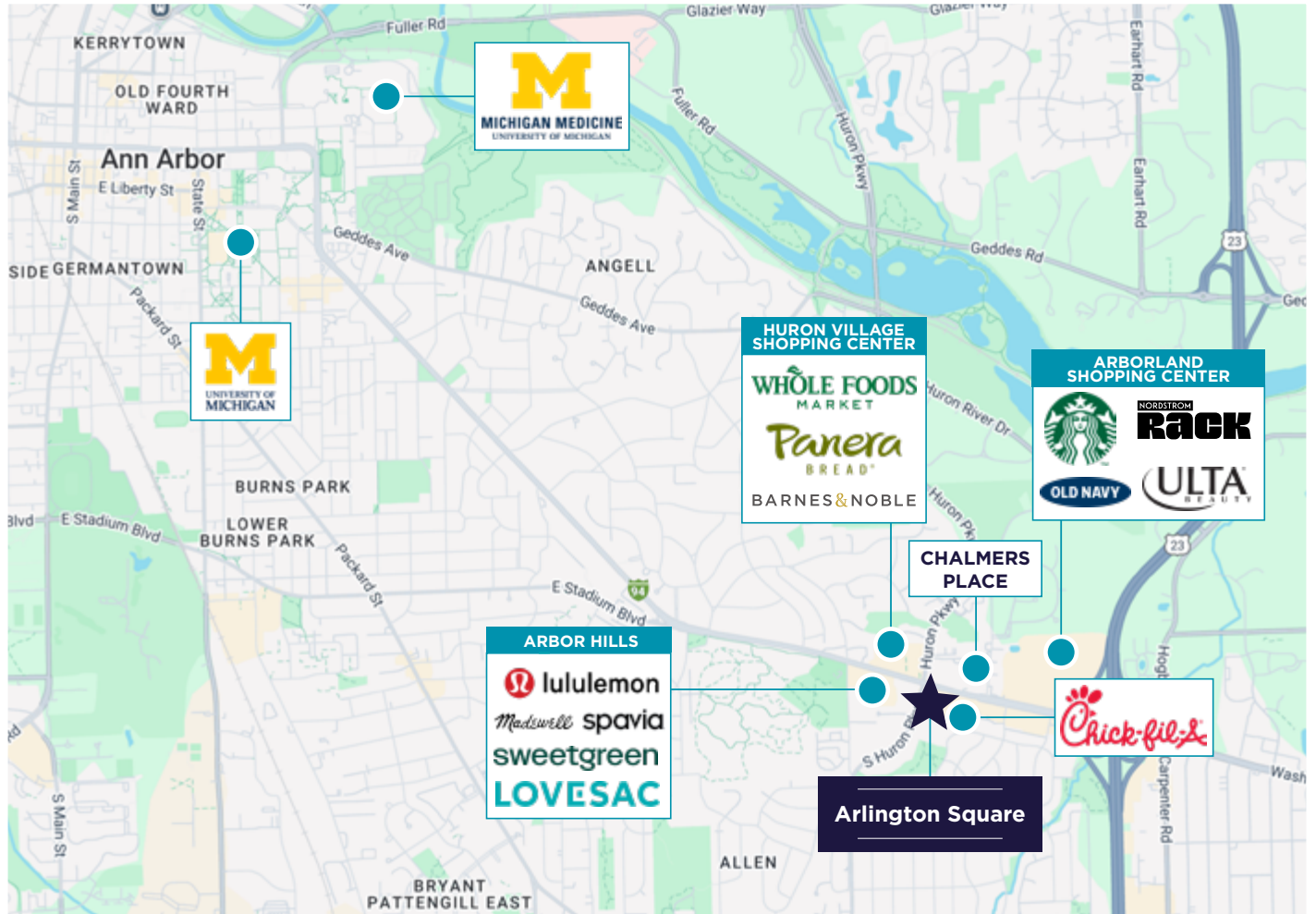
Director
+1 248 358 6113
kyle.passage@cushwake.com

Tony Avendt

Executive Director
+1 248 358 6115
tony.avendt@cushwake.com

27777 Franklin Road, Suite 1050
Southfield, Michigan 48034
Main +1 248 358 6100
cushmanwakefield.com

AMENITIES MAP



Arbor Hills Shopping Mall



University of Michigan Campus



University of Michigan Hospital

CONTACT

Kyle Passage

Director
+1 248 358 6113
kyle.passage@cushwake.com

Tony Avendt

Executive Director
+1 248 358 6115
tony.avendt@cushwake.com

27777 Franklin Road, Suite 1050
Southfield, Michigan 48034
Main +1 248 358 6100
cushmanwakefield.com

LOBBY INTERIOR



PARKING GARAGE



CONTACT

Kyle Passage

Director
+1 248 358 6113
kyle.passage@cushwake.com

Tony Avendt

Executive Director
+1 248 358 6115
tony.avendt@cushwake.com

27777 Franklin Road, Suite 1050
Southfield, Michigan 48034
Main +1 248 358 6100
cushmanwakefield.com

ARLINGTON SQUARE

3300 WASHTENAW AVENUE
ANN ARBOR, MI 48104

