

±1.87 ACRES

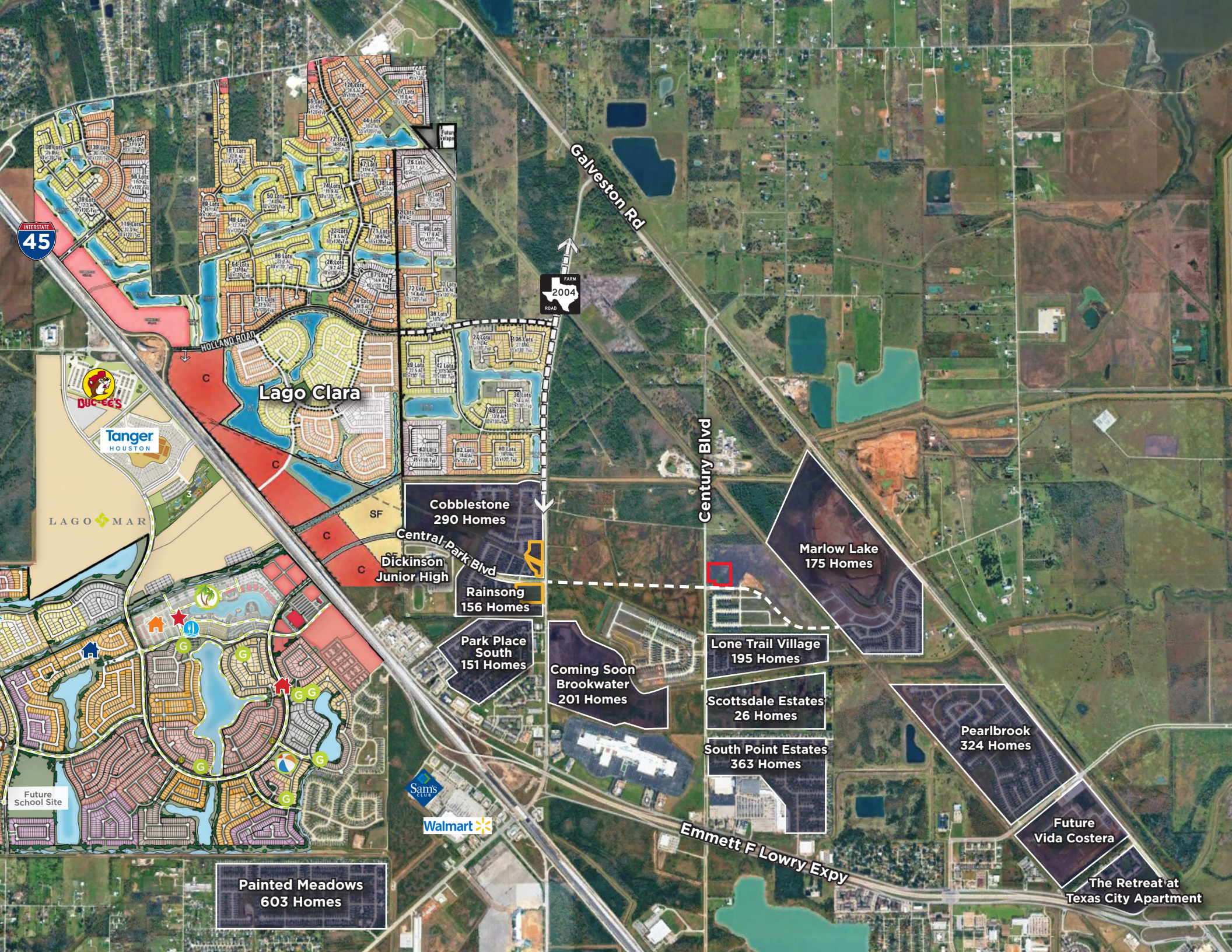
FUTURE NEC OF CENTURY BLVD AND CENTRAL PARK BLVD
TEXAS CITY, TX 77591



KRISTEN McDADE
Managing Director
+1 713 331 1798
kristen.mcdade@cushwake.com

MATTHEW DAVIS
Senior Director
+1 713 331 1796
matthew.davis@cushwake.com

MELISSA ELIZONDO
Brokerage Specialist
+1 346 396 4008
melissa.elizondo@cushwake.com



INTERSTATE
45

Galveston Rd



Century Blvd

Emmett F Lowry Expy

Lago Clara

Cobblestone
290 Homes

Central Park Blvd
Dickinson Junior High

Rainsong
156 Homes

Park Place South
151 Homes

Coming Soon
Brookwater
201 Homes

Lone Trail Village
195 Homes

Scottsdale Estates
26 Homes

South Point Estates
363 Homes

Marlow Lake
175 Homes

Pearlbrook
324 Homes

Future
Vida Costera

The Retreat at
Texas City Apartment

Painted Meadows
603 Homes



Tanger
HOUSTON

LAGO MAR



Walmart

Future
School Site

PROPERTY OVERVIEW

Positioned at the NEC of Century Blvd and the future Central Park Blvd, this ±1.87-acre tract is situated within the Central Park Square master-planned community. Central Park Blvd is planned to connect I-45 to Hwy 3/Old Galveston Rd, providing future accessibility and visibility. The site is located just north of Mall of the Mainland and the UTMB Health facility, and within minutes of Tanger Outlets and the Lago Mar Lagoon development.

PROPERTY HIGHLIGHTS



±1.87 Acres



Zoning: Single-Family Residential



Located within the 500-year floodplain



Utilities: Available via MUD 79

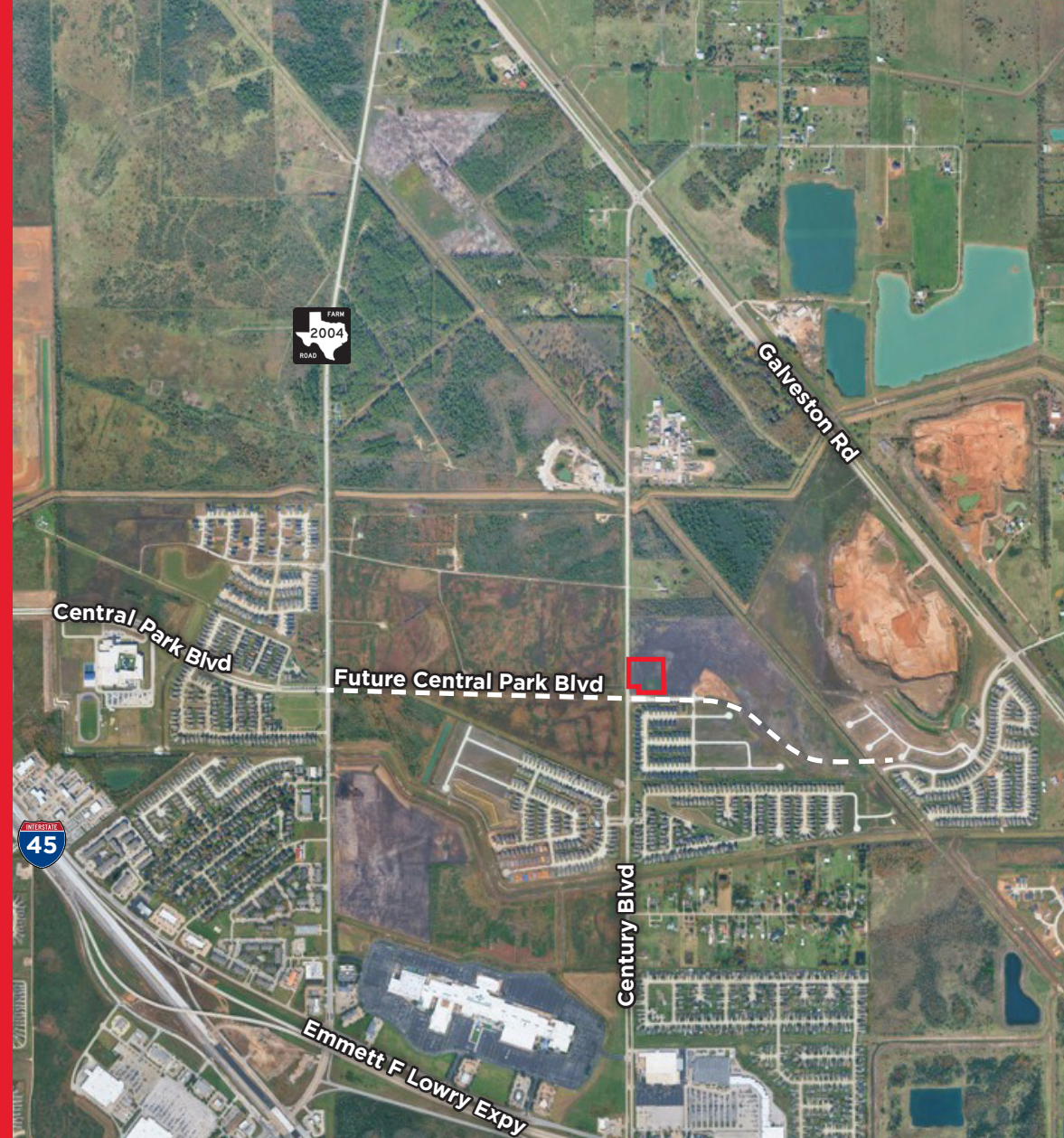


Frontage: ±234.8' on Century Blvd
±216' on future Central Park Blvd



NEARBY SCHOOLS

- Dickinson Independent School District (DISD)



KRISTEN McDADE

Managing Director

+1 713 331 1798

kristen.mcdade@cushwake.com

MATTHEW DAVIS

Senior Director

+1 713 331 1796

matthew.davis@cushwake.com

MELISSA ELIZONDO

Brokerage Specialist

+1 346 396 4008

melissa.elizondo@cushwake.com



1330 Post Oak Boulevard, Suite 2700, Houston, TX
cushmanwakefield.com