



STANTON ROAD
CAPITAL

Regus

NOW LEASING

UNION PARK 4

6975 UNION PARK AVENUE
SALT LAKE CITY, UTAH



CUSHMAN &
WAKEFIELD

UNION PARK 4

6975 UNION PARK AVENUE
SALT LAKE CITY, UTAH

Each **Union Park** building has a two-story open atrium lobby. The buildings have stunning views of the Salt Lake Valley. Covered parking is available and the buildings are equipped with high-speed fiber optic network and Internet connectivity, as well as centralized security and surveillance.

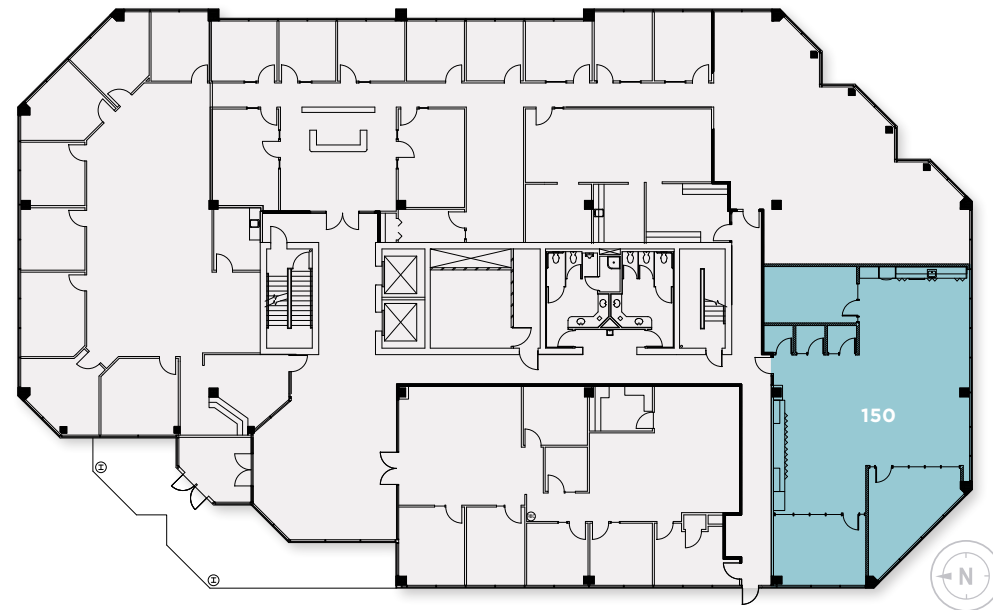
\$28.50
PSF, FULL SERVICE
CLASS A
FINISHES



LOBBY TOUR

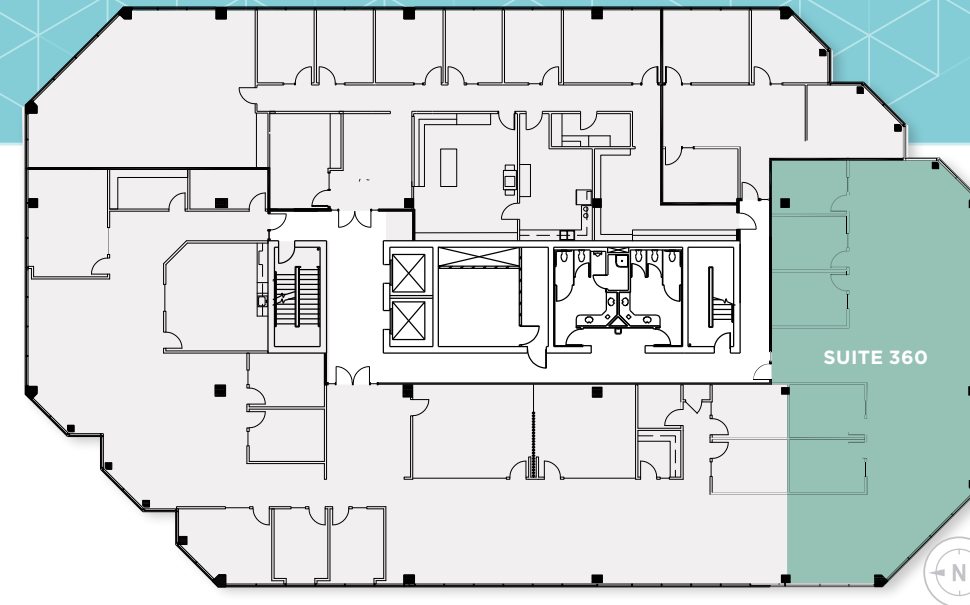
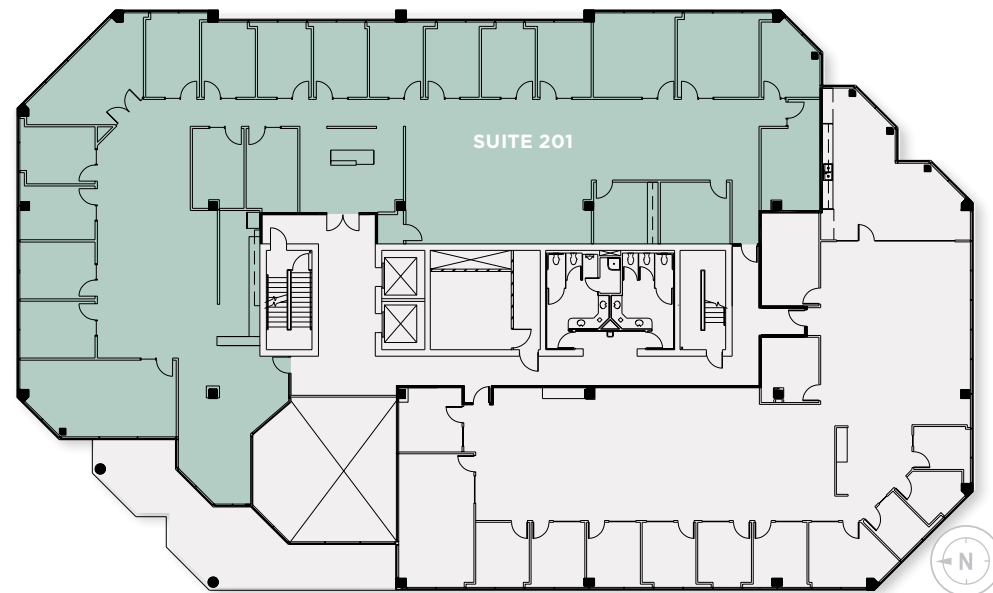
FIRST FLOOR

SUITE:	150
SIZE:	2,403 RSF
AVAILABLE:	Immediately



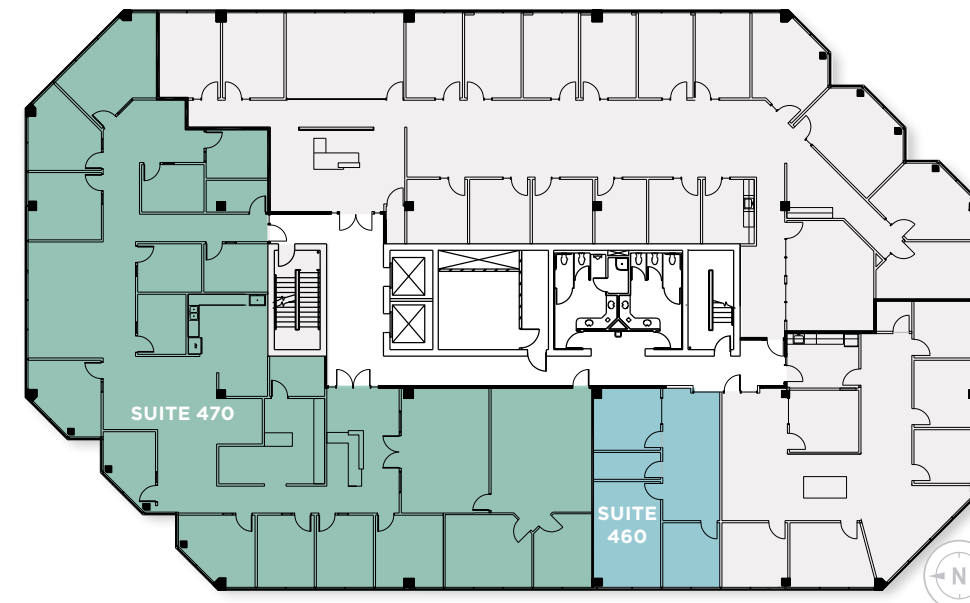
SECOND FLOOR

SUITE:	201
SIZE:	9,560 RSF
AVAILABLE:	Immediately



THIRD FLOOR

SUITE:	360
SIZE:	3,170 RSF
AVAILABLE:	Immediately

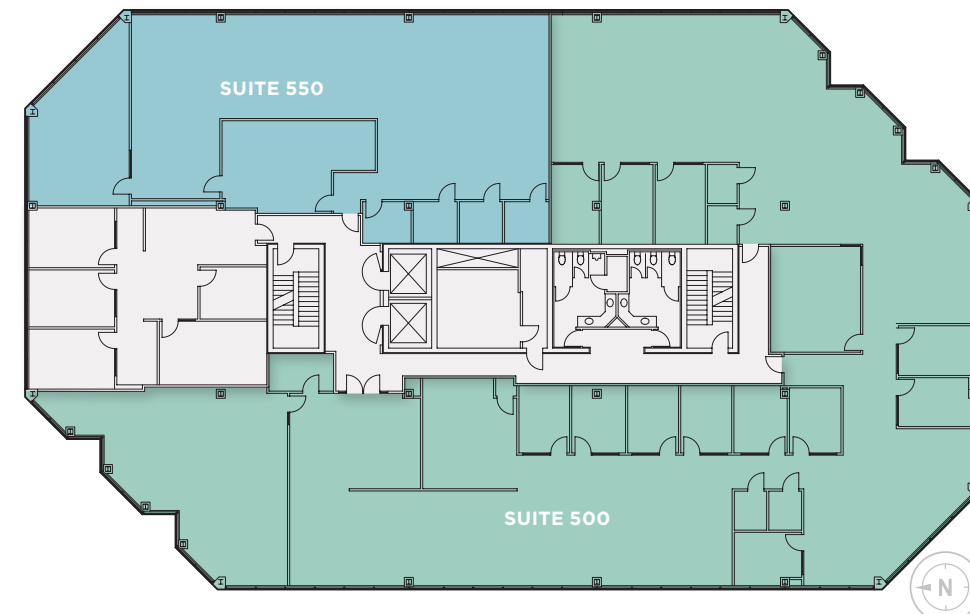


FOURTH FLOOR

SUITE:	460
SIZE:	1,020 RSF
AVAILABLE:	Immediately

SUITE:	470
SIZE:	6,814 RSF
AVAILABLE:	Immediately

Two spaces can be combined for a total of 7,834 RSF



FIFTH FLOOR

SUITE:	500
SIZE:	11,241 RSF

AVAILABLE: Currently available for sublease

SUITE:	550
SIZE:	3,575 RSF
AVAILABLE:	Immediately

Two spaces can be combined for a total of 14,816 RSF



SURROUNDING AREA

Conveniently located in the center of Salt Lake, within minutes of fine residential neighborhoods as well as the major freeway system, Fashion Place Mall and numerous restaurants and lodging.

Contact Info

Dana Baird, CCIM
 Executive Managing Director
 +1 801 303 5526
 dana.barid@cushwake.com

Mike Richmond
 Executive Managing Director
 +1 801 303 5434
 mike.richmond@cushwake.com

Hannah King
 Associate
 +1 801 303 5440
 hannah.king1@cushwake.com



170 South Main Street, Suite 1600
 Salt Lake City, UT 84101
 +1 801 322 2000
 cushmanwakefield.com



©2025 Cushman & Wakefield. All rights reserved. The information contained in this communication is strictly confidential. This information has been obtained from sources believed to be reliable but has not been verified. NO WARRANTY OR REPRESENTATION, EXPRESS OR IMPLIED, IS MADE AS TO THE CONDITION OF THE PROPERTY (OR PROPERTIES) REFERENCED HEREIN OR AS TO THE ACCURACY OR COMPLETENESS OF THE INFORMATION CONTAINED HEREIN, AND SAME IS SUBMITTED SUBJECT TO ERRORS, OMISSIONS, CHANGE OF PRICE, RENTAL OR OTHER CONDITIONS, WITHDRAWAL WITHOUT NOTICE, AND TO ANY SPECIAL LISTING CONDITIONS IMPOSED BY THE PROPERTY OWNER(S). ANY PROJECTIONS, OPINIONS OR ESTIMATES ARE SUBJECT TO UNCERTAINTY AND DO NOT SIGNIFY CURRENT OR FUTURE PROPERTY PERFORMANCE.