

FOR LEASE
7,600 SF

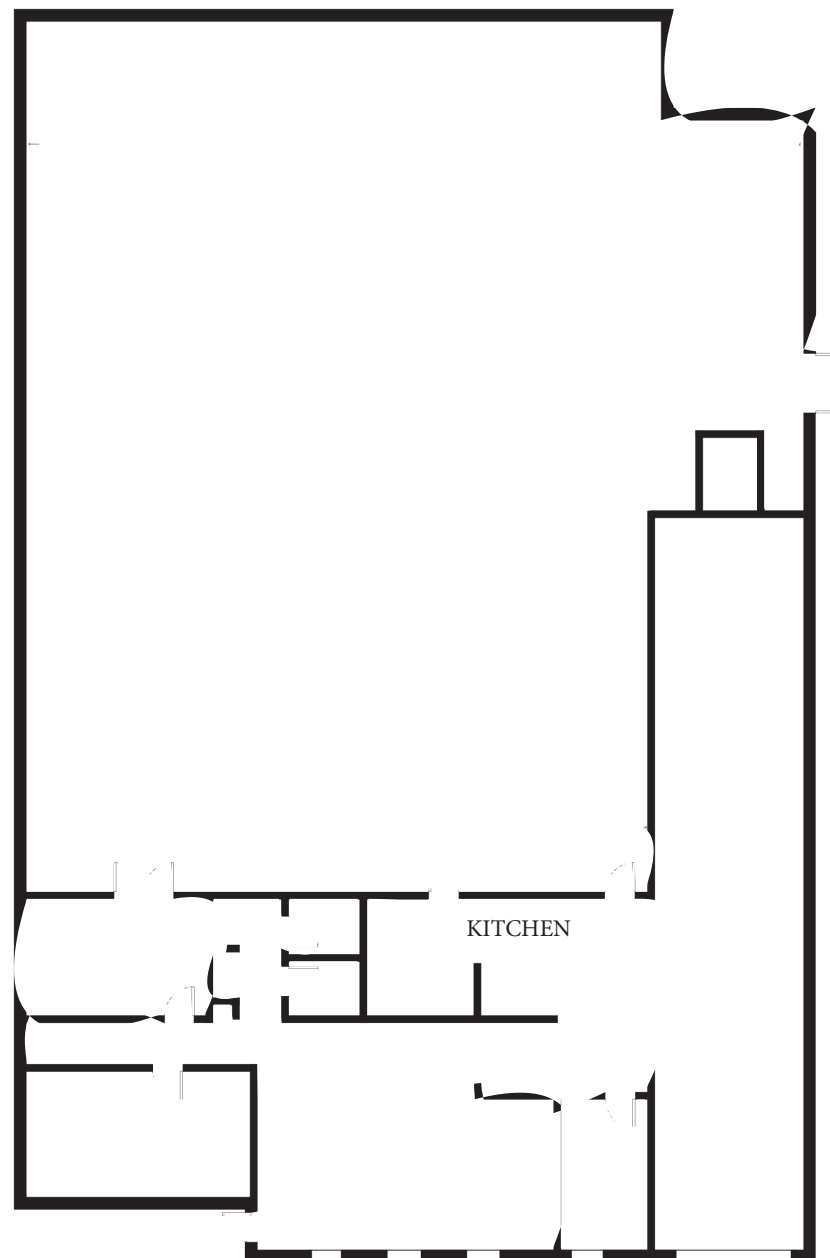


466-488 DIENS DRIVE
UNIT #468
WHEELING, IL

466-488 DIENS DRIVE | WHEELING, IL

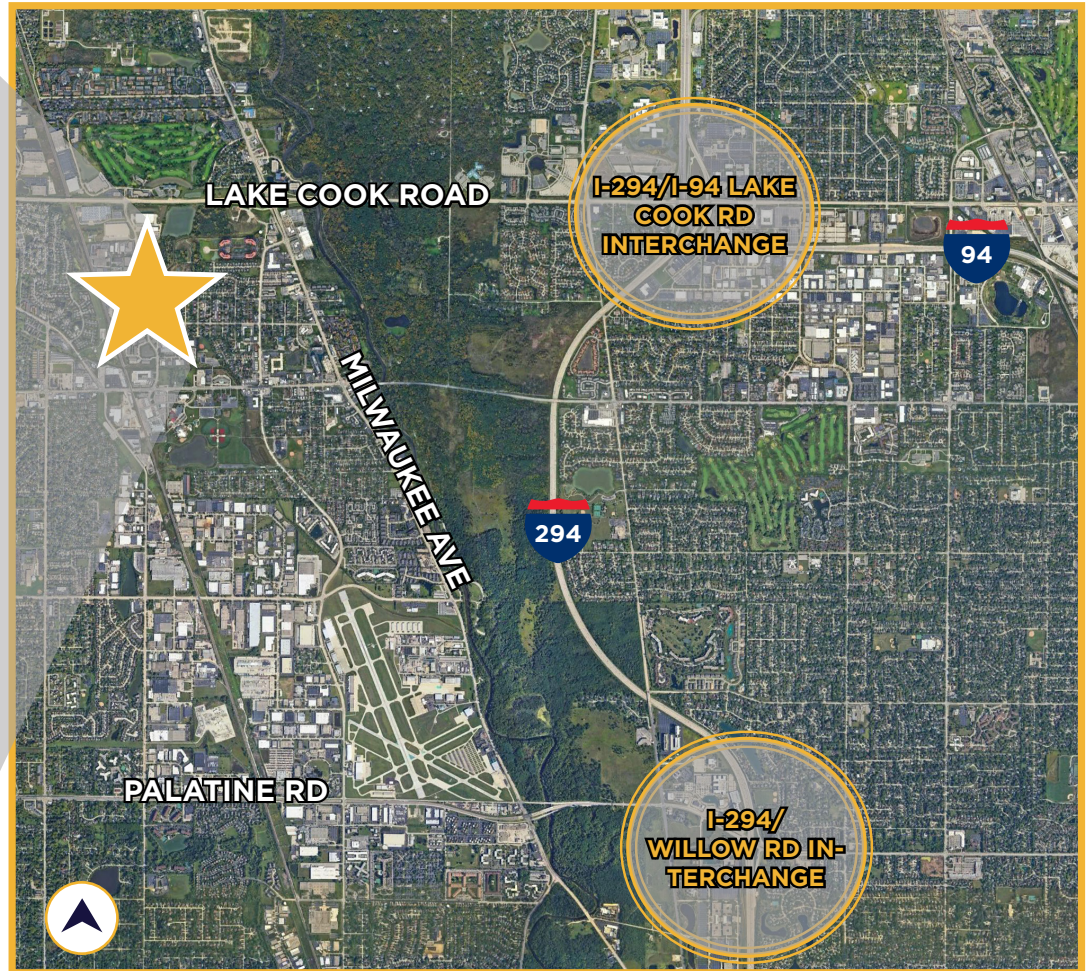
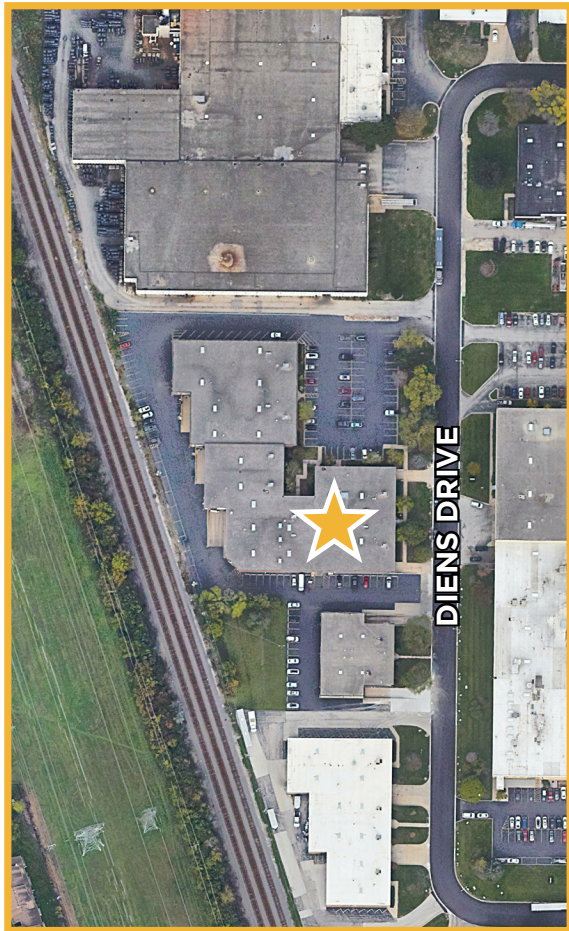
PROPERTY HIGHLIGHTS

Building Size:	57,283 SF
Space Available:	7,600 SF
Office:	+/- 1,500 SF
Year Built:	1987
Clear Height:	17'
Drive-in Door:	1
Exterior Docks:	1
Clear Height:	17'
Sprinkled:	Yes
Column Spacing:	32' X 26'
Parking:	15 Cars
Lease Rate:	Subject to Offer



LOCATION MAP

- Easy access to I-94/I-294 four-way interchange at Lake Cook Rd.
- 10 minutes from I-294
- 15 minutes from Route 53
- 22 minutes from O'Hare Airport



CONTACT INFORMATION

MARC SAMUELS

Senior Director
marc.samuels@cushwake.com
+1 847 720 1368

ERIC FISCHER

Vice Chair
eric.fischer@cushwake.com
+1 847 720 1369

KEITH PURITZ

Vice Chair
keith.puritz@cushwake.com
+1 847 720 1366

ROUSH KHAN

Associate
roush.kahn@cushwake.com
+ 312 424 8095

BRETT KRONER

Vice Chair
brett.kroner@cushwake.com
+1 847 720 1367

