

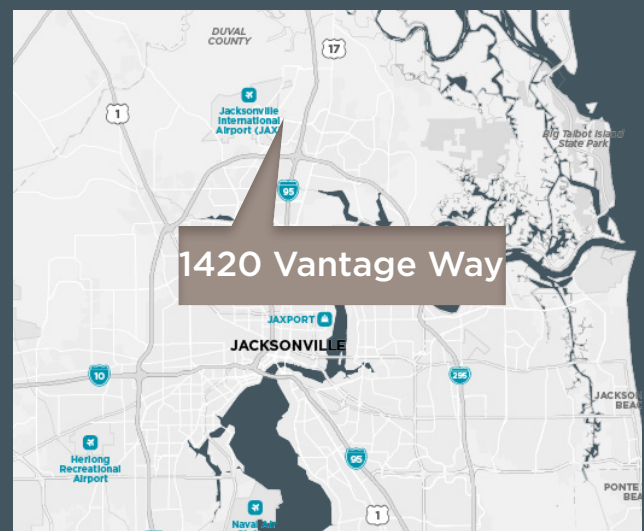
FOR LEASE INTERNATIONAL TRADEPORT

1420 VANTAGE WAY, SUITE 110 | JACKSONVILLE, FL 32218



PROPERTY HIGHLIGHTS

TOTAL AVAILABLE:	±20,400 SF
OFFICE SPACE:	±1,265 SF
CLEAR HEIGHT:	24'-4" - 26'
DOCKS:	7
DRIVE-IN:	1
COLUMN SPACING:	40' x 56'8"
FIRE PROTECTION:	Wet
YEAR BUILT:	1998
TRUCK COURT:	120'
AVAILABLE:	January 2027

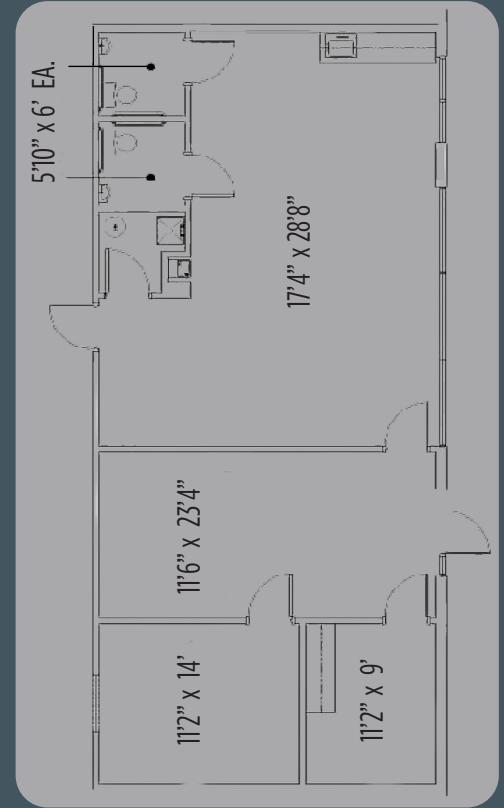
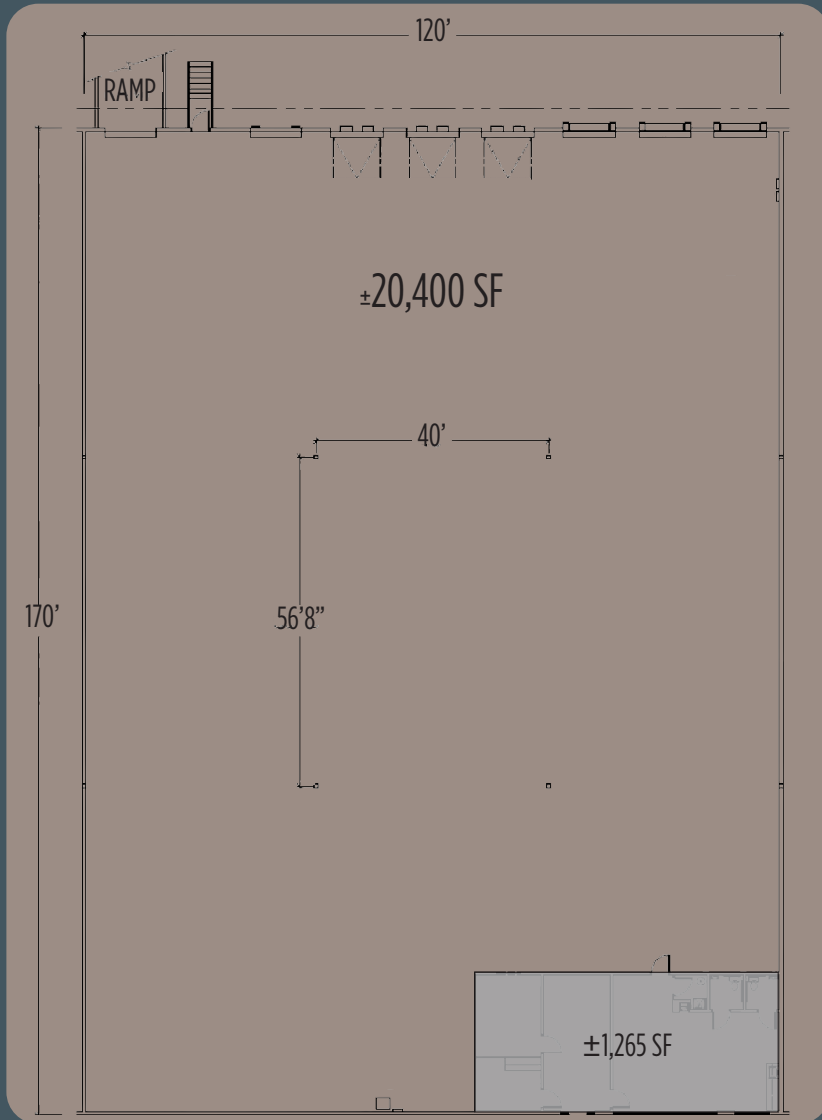


FOR MORE INFO:
WWW.GIDTRADEPORT.COM

GID
INDUSTRIAL

CUSHMAN & WAKEFIELD

SITE PLAN



Office - ±1,265 SF



FOR MORE INFORMATION, PLEASE CONTACT:

TYLER NEWMAN
 Executive Managing Director
 904 380 8336
 tyler.newman@cushwake.com

JACOB HORSLEY
 Executive Managing Director
 904 380 8335
 jacob.horsley@cushwake.com



©2026 Cushman & Wakefield. All rights reserved. The information contained in this communication is confidential, may be privileged and is intended for the exclusive use of the above named addressee(s). If you are not the intended recipient(s), you are expressly prohibited from copying, distributing, disseminating, or in any other way using any information contained within this communication. This information has been obtained from sources believed to be reliable but has not been verified. NO WARRANTY OR REPRESENTATION, EXPRESS OR IMPLIED, IS MADE AS TO THE CONDITION OF THE PROPERTY (OR PROPERTIES) REFERENCED HEREIN OR AS TO THE ACCURACY OR COMPLETENESS OF THE INFORMATION CONTAINED HEREIN, AND SAME IS SUBMITTED SUBJECT TO ERRORS, OMISSIONS, CHANGE OF PRICE, RENTAL OR OTHER CONDITIONS, WITHDRAWAL WITHOUT NOTICE, AND TO ANY SPECIAL LISTING CONDITIONS IMPOSED BY THE PROPERTY OWNER(S). ANY PROJECTIONS, OPINIONS OR ESTIMATES ARE SUBJECT TO UNCERTAINTY AND DO NOT SIGNIFY CURRENT OR FUTURE PROPERTY PERFORMANCE. This e-mail may be considered advertising under federal law.