



**CUSHMAN &
WAKEFIELD**

UNIT 105

UNIT 104

9,314 SF TO 21,600 SF AVAILABLE

19050 25TH AVENUE

SURREY, BC

**PACIFIC CROSSING MULTI-TENANT
WAREHOUSE WITH DOCK & GRADE LOADING**

PROPERTY HIGHLIGHTS

LOCATION

The subject property is located on the corner of 190th Street and 25th Avenue. Campbell Heights is well known as one of the most successful and well planned out business parks in the Lower Mainland. Its central location provides easy access to major highways. Stringent landscape requirements ensure Campbell Heights will have a great street appeal and presence.

ZONING

IB-1 (Business Park 1) Allows for a wide variety of light industrial and office uses, such as wholesale, storage, manufacturing, processing, assembly, fabricating, testing, servicing and repairing of goods or materials.

PROPERTY FEATURES

MAIN FLOOR OFFICE (UNIT 105)

- Carpet
- HVAC system
- Dropped t-bar ceiling
- Fluorescent lighting
- Open plan & two private offices
- Handicap-accessible washroom
- Lunchroom with kitchenette, sink & counter

WAREHOUSE

- Forced air natural gas heating
- LED lighting
- 200 Amp, 347/600 volts, 3-phase electrical service per bay
- Four (4) dock doors & one (1) 16'x14' grade door
- Approximately 26'2" ceilings
- Washrooms
- Ceiling fans
- Wall separation between Units 104 & 105

LEASE RATE

\$20.95 per square foot, net, per annum, plus GST

ADDITIONAL RENT (2026)

Approximately \$6.71 per square foot, per annum, plus GST



UNIT 104 & 105 SITEPLAN

AVAILABLE AREAS

UNIT 104

Main floor office	Built to suit
Warehouse	12,286 SF
TOTAL AVAILABLE AREA	12,286 SF

- 2 dock loading doors

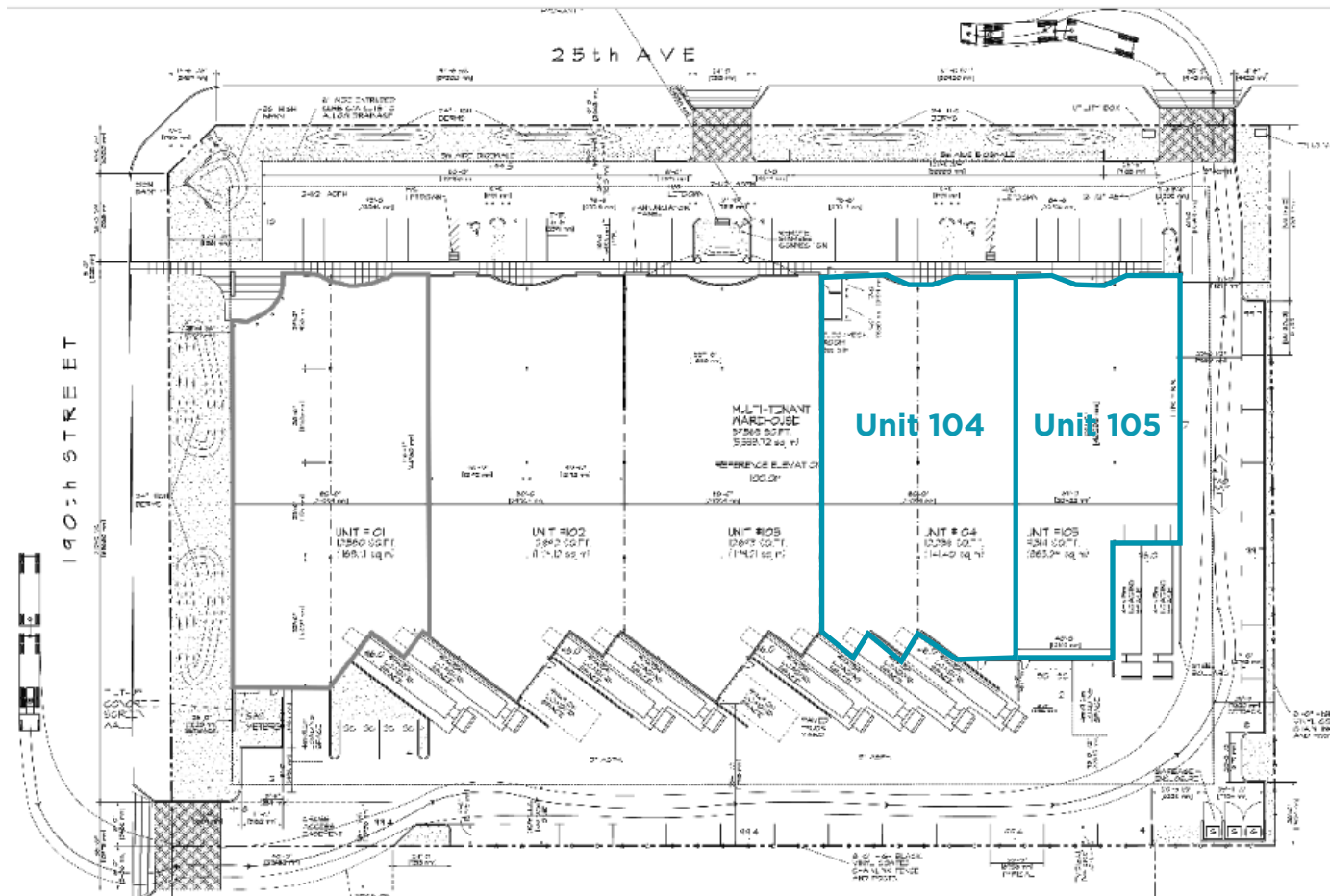
UNIT 105

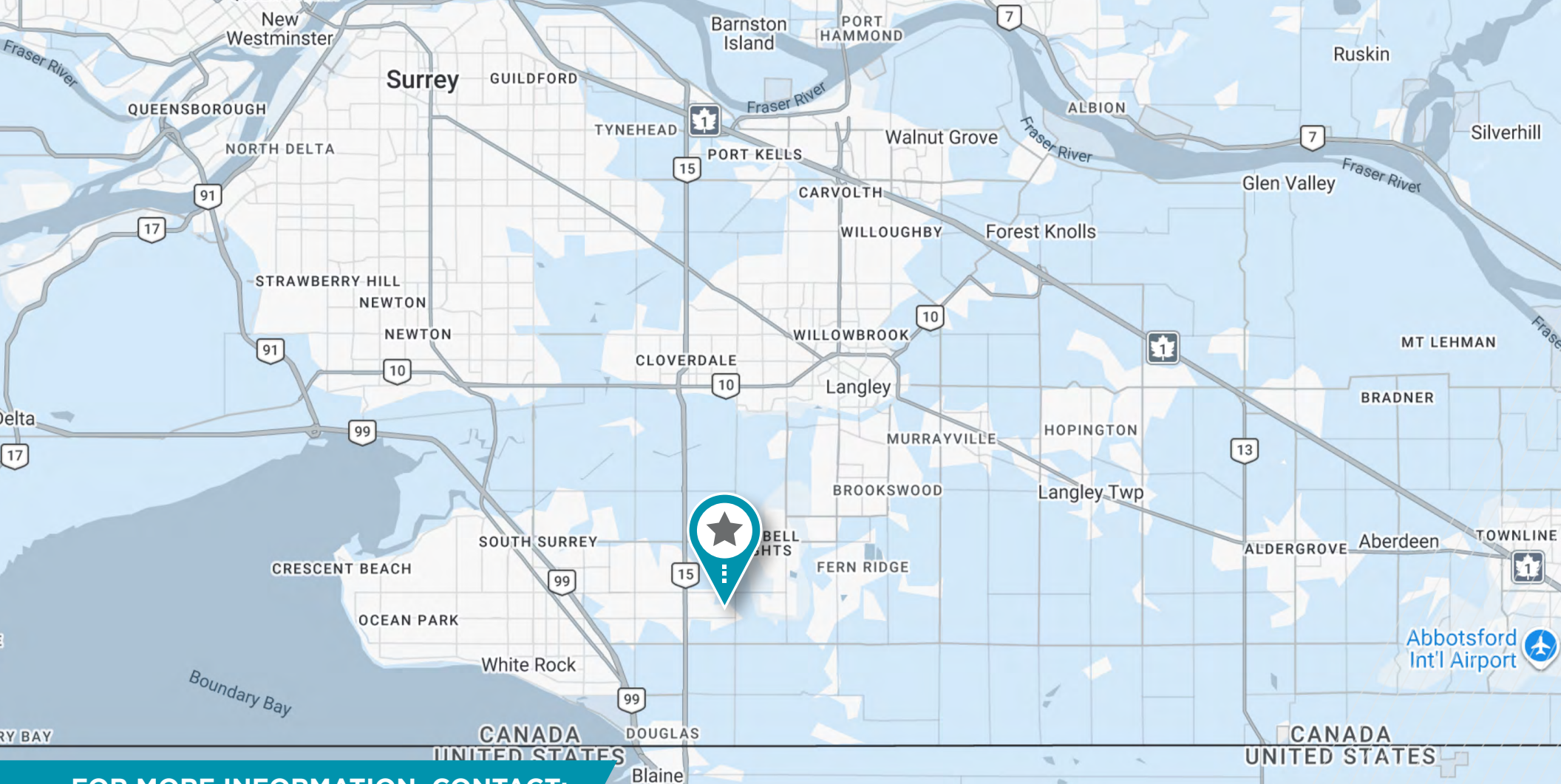
Main floor office	1,346 SF
Warehouse	7,968 SF
TOTAL AVAILABLE AREA	9,314 SF

- 2 dock & 1 grade door

AVAILABILITY

December 1st, 2026





FOR MORE INFORMATION, CONTACT:

ERIC RICE

Personal Real Estate Corporation
Vice President, Industrial
+1 604 640 5877
eric.rice@cushwake.com

KEVIN VOLZ

Personal Real Estate Corporation
Vice President, Industrial
+1 604 640 5851
kevin.volz@cushwake.com

ANDREW GREEN

Personal Real Estate Corporation
Vice President, Industrial
+1 604 640 5800
andrew.green@cushwake.com

700 West Georgia Street / Pacific Centre, Suite 1200 / Vancouver, BC V7Y 1A1 / +1 604 683 3111 / cushmanwakefield.com

©2026 Cushman & Wakefield. All rights reserved. The information contained in this communication is strictly confidential. This information has been obtained from sources believed to be reliable but has not been verified. NO WARRANTY OR REPRESENTATION, EXPRESS OR IMPLIED, IS MADE AS TO THE CONDITION OF THE PROPERTY (OR PROPERTIES) REFERENCED HEREIN OR AS TO THE ACCURACY OR COMPLETENESS OF THE INFORMATION CONTAINED HEREIN, AND SAME IS SUBMITTED SUBJECT TO ERRORS, OMISSIONS, CHANGE OF PRICE, RENTAL OR OTHER CONDITIONS, WITHDRAWAL WITHOUT NOTICE, AND TO ANY SPECIAL LISTING CONDITIONS IMPOSED BY THE PROPERTY OWNER(S). ANY PROJECTIONS, OPINIONS OR ESTIMATES ARE SUBJECT TO UNCERTAINTY AND DO NOT SIGNIFY CURRENT OR FUTURE PROPERTY PERFORMANCE. PD-202548_v3

