

119-121 CHURCH STREET



FULL BUILDING FLAGSHIP RETAIL AND OFFICE
FOR LEASE IN DOWNTOWN TORONTO

PROPERTY HIGHLIGHTS



Address: 119-121 Church Street, Toronto

Size:

Retail: 13,770 SF (6,885 SF Ground Floor + 6,885 SF 2nd Floor)

Office: 10,306 SF (6,885 SF 3rd Floor + 3,421 SF 4th Floor)

Total: 24,076 SF Above Grade

Basement: 6,291 SF

Gross Rent: \$23,000/month

Availability: Immediate

Shipping: 1 Truck Level Door; 2 Grade Level Doors in Laneway

Elevator: 1 Freight

Zoning: CR

Term: 1-3 years

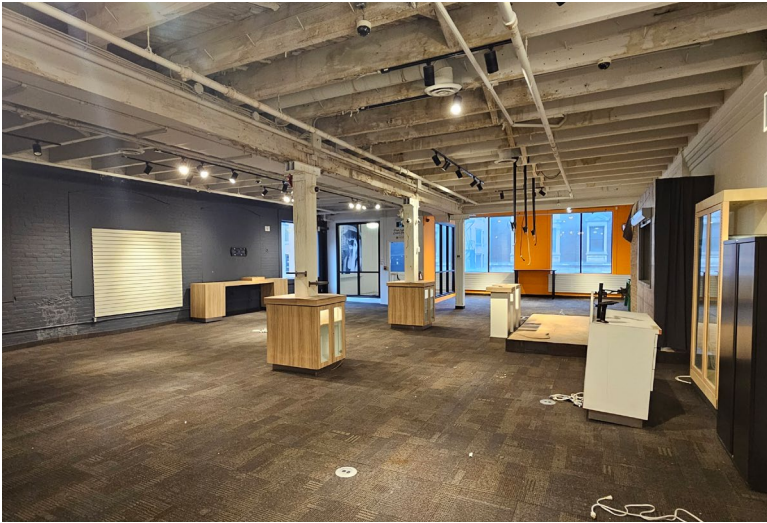
- High-exposure frontage with wide street-level presence and large display windows, perfect for flagship retail, high-end cares, or service - based businesses
- Benefit from prominent signage opportunities on a high-traffic arterial road
- Just steps from TMU, George Brown College, and the Financial District, ensuring a steady stream of students, professionals, and tourists

INTERIOR

Main Floor – 6,885 SF



2nd Floor – 6,885 SF



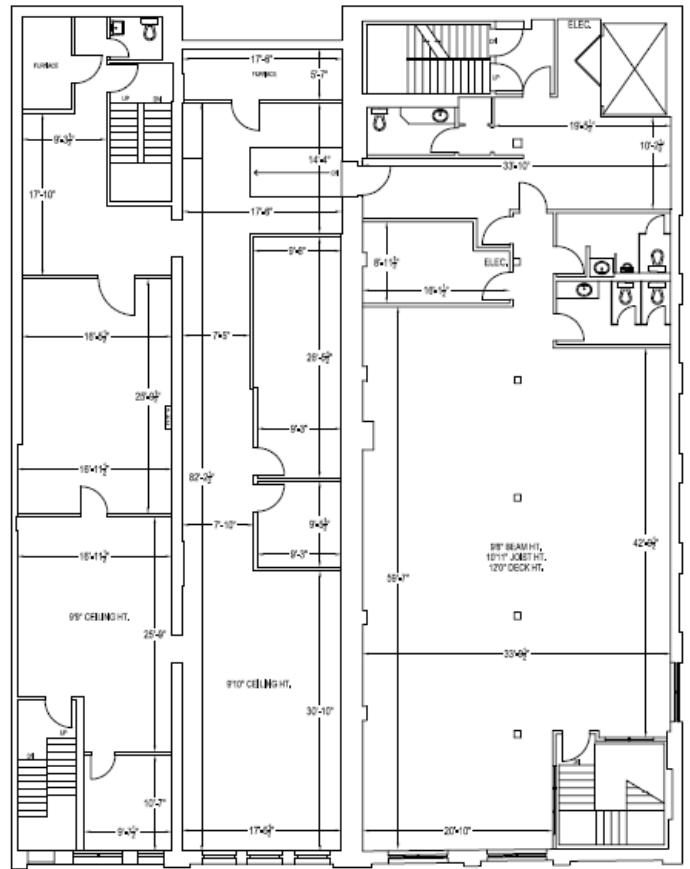
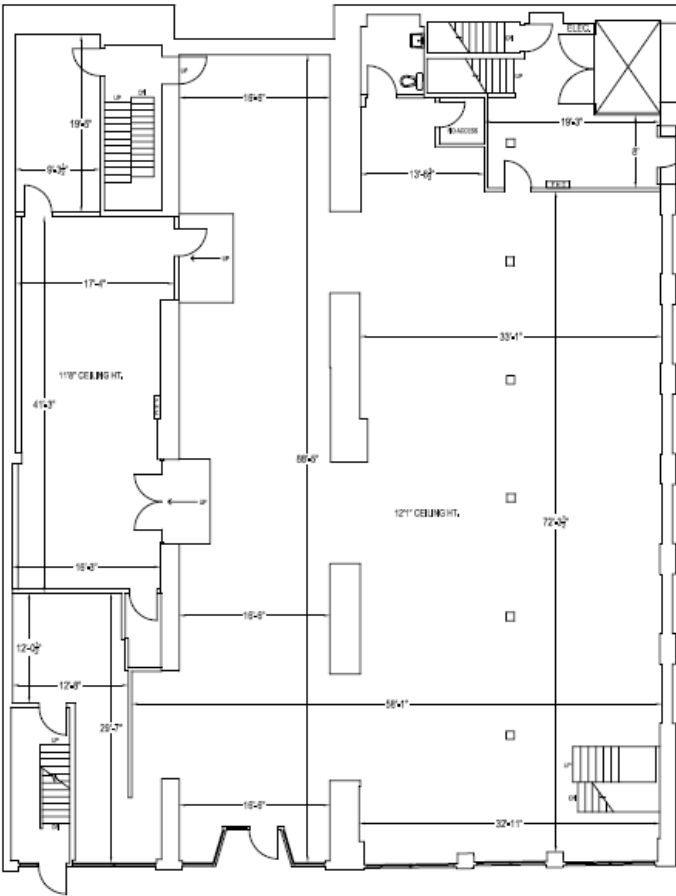
3rd Floor – 6,895 SF



FLOOR PLANS

Main Floor - 6,885 SF

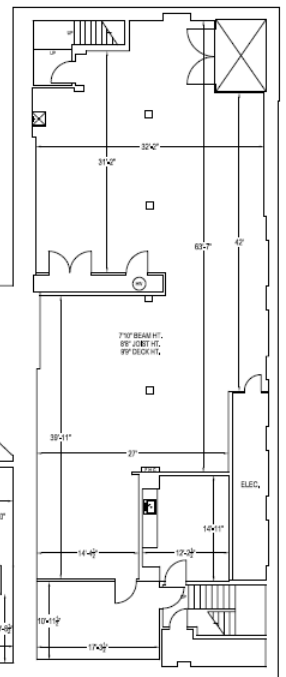
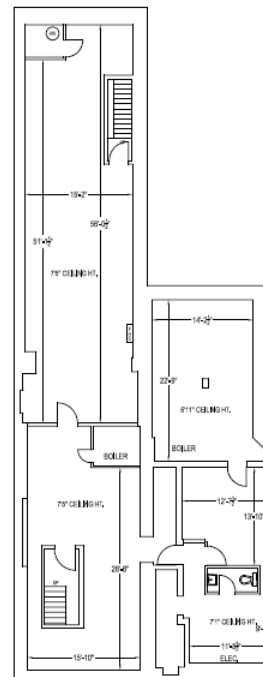
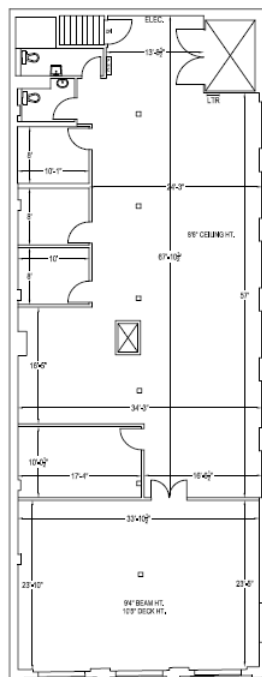
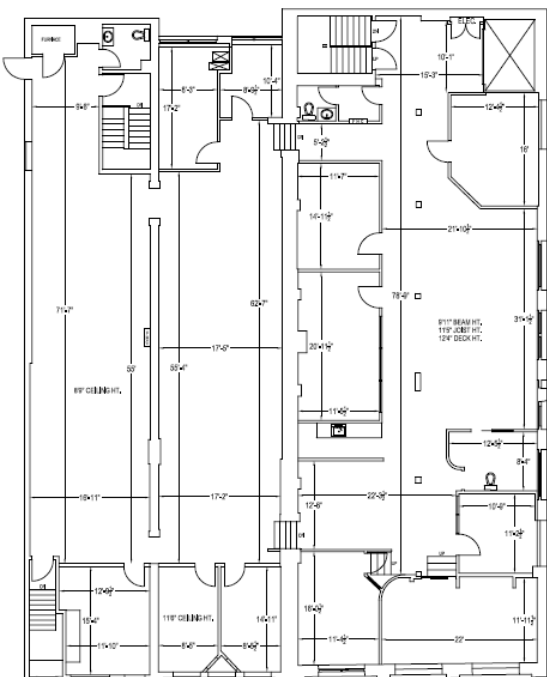
2nd Floor - 6,885 SF



3rd Floor - 6,895 SF

4th Floor - 3,421 SF

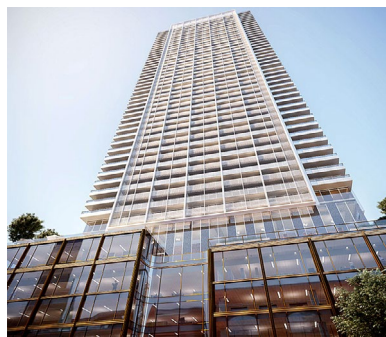
Basement - 6,291 SF



LOCATION / AMENITIES

Massive residential intensification with thousands of new condo units currently under development or completed coupled with vibrant local amenities.

ADDRESS	STATUS	APPROXIMATELY UNITS
89 Church Street	Recently Completed	415
120 Church Street	Under Construction	495
60 Queen Street East	Under Construction	445
199 Church Street	Completed	480
88 Queen Street E	Under Construction	500+
60 Shuter Street	-	370
77 Mutual Street	-	375
65 Mutual Street	-	230
229 Church Street	-	600
210-220 Victoria Street	-	600





FOR MORE INFORMATION, PLEASE CONTACT:

Mike Betel*

Vice President
+1 416 359 2706
mike.betel@ca.cushwake.com

Matthew McTavish

Executive Vice President
+1 416 659 0195
matthew.mctavish@cushwake.com

Simon LeFave*

Associate
+1 416 359 2586
simon.lefave@cushwake.com

©2026 Cushman & Wakefield. All rights reserved. The information contained in this communication is strictly confidential. This information has been obtained from sources believed to be reliable but has not been verified. NO WARRANTY OR REPRESENTATION, EXPRESS OR IMPLIED, IS MADE AS TO THE CONDITION OF THE PROPERTY (OR PROPERTIES) REFERENCED HEREIN OR AS TO THE ACCURACY OR COMPLETENESS OF THE INFORMATION CONTAINED HEREIN, AND SAME IS SUBMITTED SUBJECT TO ERRORS, OMISSIONS, CHANGE OF PRICE, RENTAL OR OTHER CONDITIONS, WITHDRAWAL WITHOUT NOTICE, AND TO ANY SPECIAL LISTING CONDITIONS IMPOSED BY THE PROPERTY OWNER(S). ANY PROJECTIONS, OPINIONS OR ESTIMATES ARE SUBJECT TO UNCERTAINTY AND DO NOT SIGNIFY CURRENT OR FUTURE PROPERTY PERFORMANCE. PD-182035

