

EXPANDABLE TO 150,000 SF



AVAILABLE FOR SUBLEASE

# FRITH BUILDING #7

108 TEXTILE ROAD  
MARTINSVILLE, VA 24112



CUSHMAN &  
WAKEFIELD

THALHIMER

# 108 TEXTILE ROAD

MARTINSVILLE, VA 24112

## Property Summary



**COUNTY**  
Henry County



**RAIL AVAILABLE**  
Yes



**TOTAL SPACE**  
100,000 SF



**CEILING HEIGHT**  
32' clear at eaves



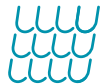
**LAND AREA**  
8.2 Acres



**PARKING SPACES**  
Available



**PRODUCT TYPE**  
Industrial



**ROOF**  
Standing Seams



**CONSTRUCTION**  
Metal & Block



**SPRINKLERED**  
Yes (Wet)



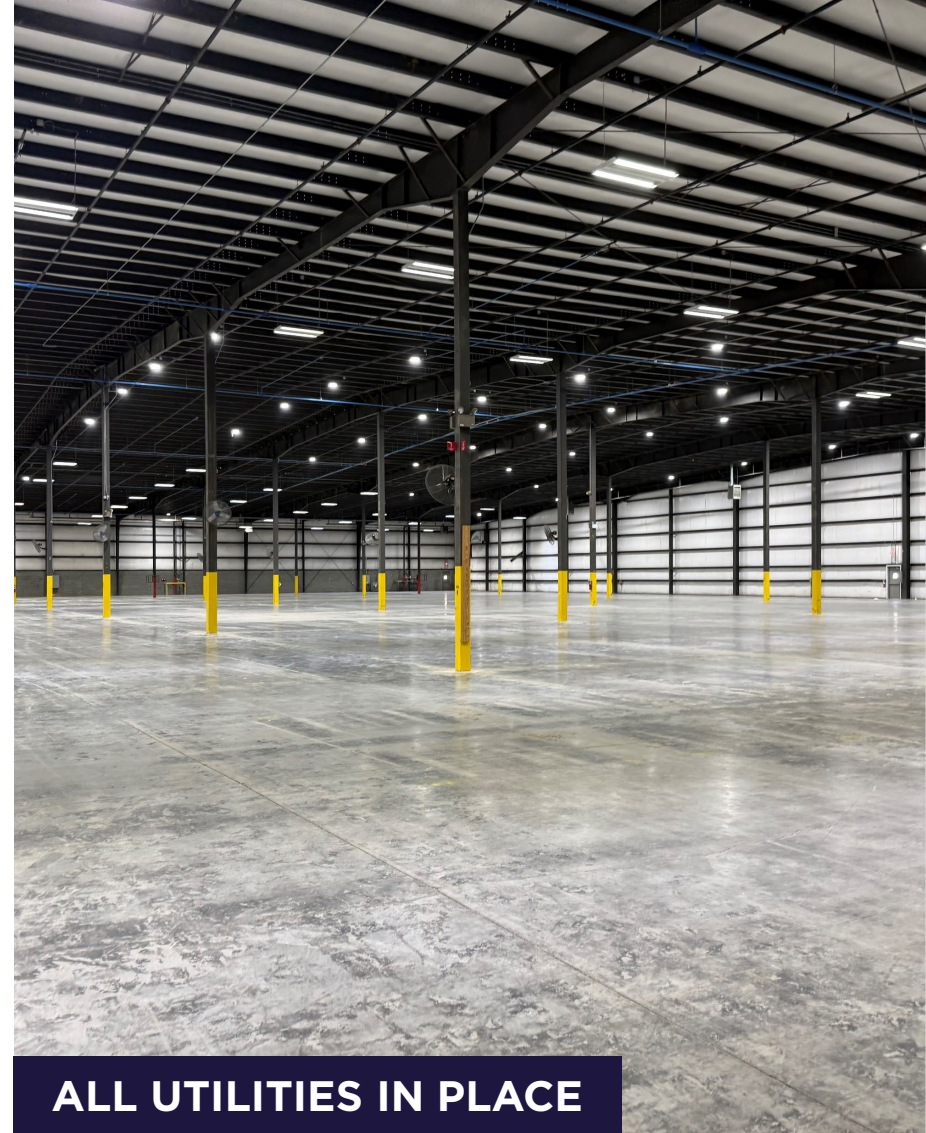
**YEAR BUILT**  
2001



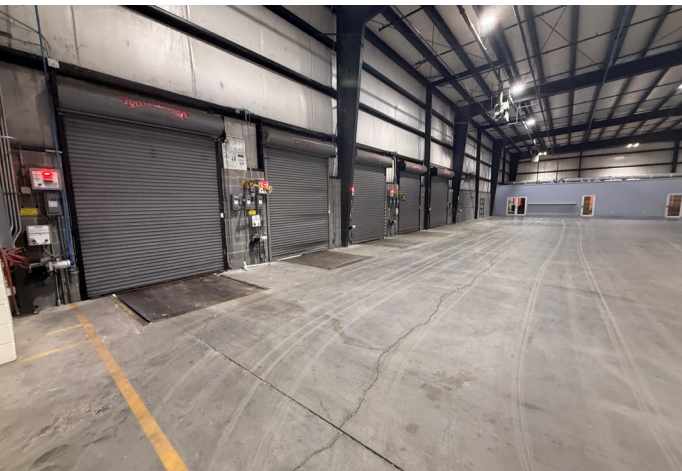
**DOCK HIGH DOORS**  
8 (+1 Drive-in Door)



**ZONING**  
Industrial (I-1)



**ALL UTILITIES IN PLACE**



# 108 TEXTILE ROAD

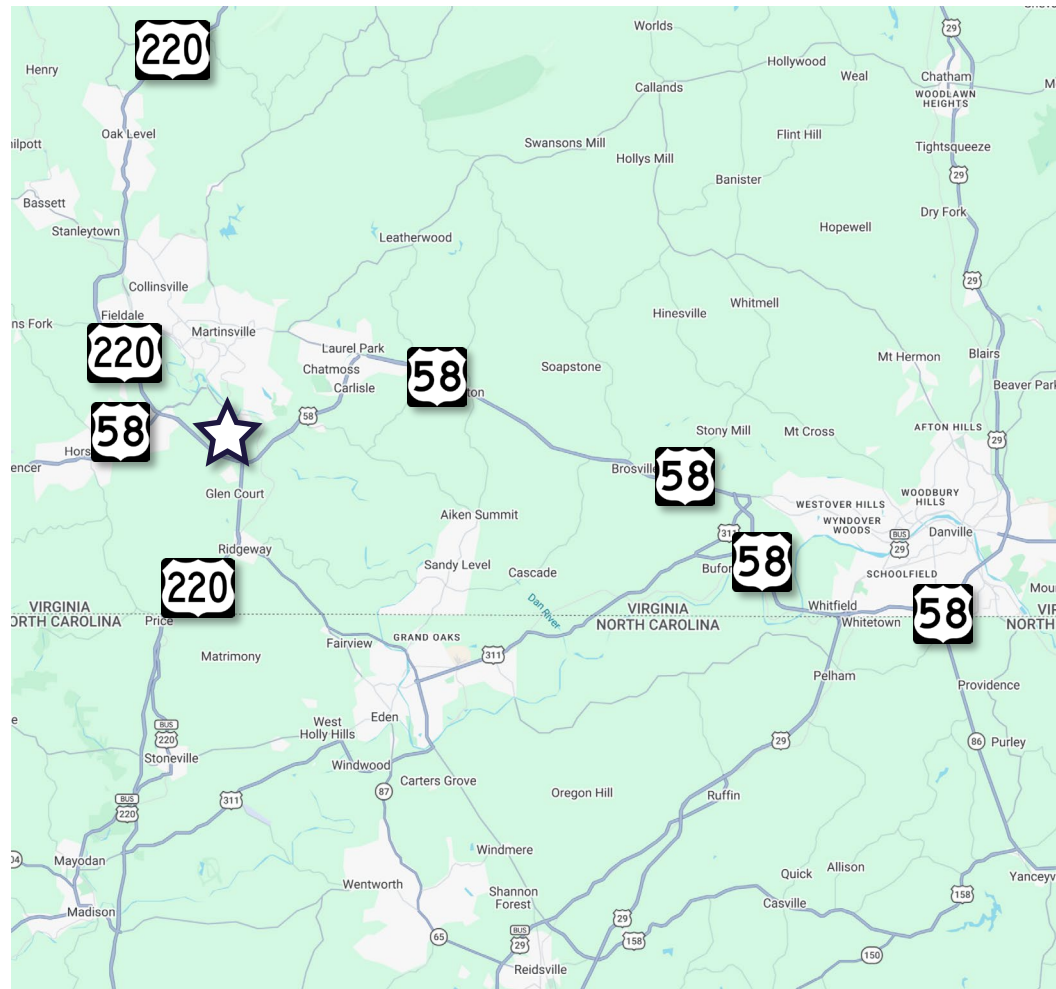
MARTINSVILLE, VA 24112

## AERIAL MAP



# 108 TEXTILE ROAD

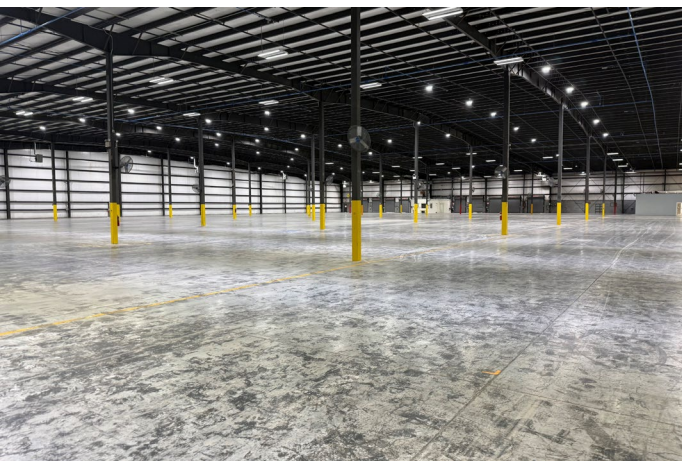
## MARTINSVILLE, VA 24112



### TRANSPORTATION

TO US-220	½ Mile
TO US-58	2 Miles
TO INTERSTATE 40	42 Miles
TO INTERSTATE 85	53 Miles

TO INTERSTATE 81	64 Miles
TO INTERSTATE 77	65 Miles
TO BLUE RIDGE REGIONAL AIRPORT	12 Miles
TO PIEDMONT TRIAD INT'L AIRPORT	42 Miles





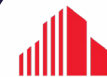
**FOR MORE INFORMATION, CONTACT:**

**Thomas W. Townes, CCIM, SIOR**  
Managing Director  
Direct: +1 336 812 3302  
[tom.townes@cushwake.com](mailto:tom.townes@cushwake.com)

**Ryan Conboy, SIOR**  
Managing Director  
Direct: +1 336 821 3832  
[ryan.conboy@cushwake.com](mailto:ryan.conboy@cushwake.com)

**Davis Stoneburner**  
Vice President  
Thalhimer  
T: +1 540 767 3006  
[davis.stoneburner@thalhimer.com](mailto:davis.stoneburner@thalhimer.com)

©2026 Cushman & Wakefield. All rights reserved. The information contained in this communication is strictly confidential. This information has been obtained from sources believed to be reliable but has not been verified. NO WARRANTY OR REPRESENTATION, EXPRESS OR IMPLIED, IS MADE AS TO THE CONDITION OF THE PROPERTY (OR PROPERTIES) REFERENCED HEREIN OR AS TO THE ACCURACY OR COMPLETENESS OF THE INFORMATION CONTAINED HEREIN, AND SAME IS SUBMITTED SUBJECT TO ERRORS, OMISSIONS, CHANGE OF PRICE, RENTAL OR OTHER CONDITIONS, WITHDRAWAL WITHOUT NOTICE, AND TO ANY SPECIAL LISTING CONDITIONS IMPOSED BY THE PROPERTY OWNER(S). ANY PROJECTIONS, OPINIONS OR ESTIMATES ARE SUBJECT TO UNCERTAINTY AND DO NOT SIGNIFY CURRENT OR FUTURE PROPERTY PERFORMANCE. PD-205499-V1



**CUSHMAN &  
WAKEFIELD**

**THALHIMER**