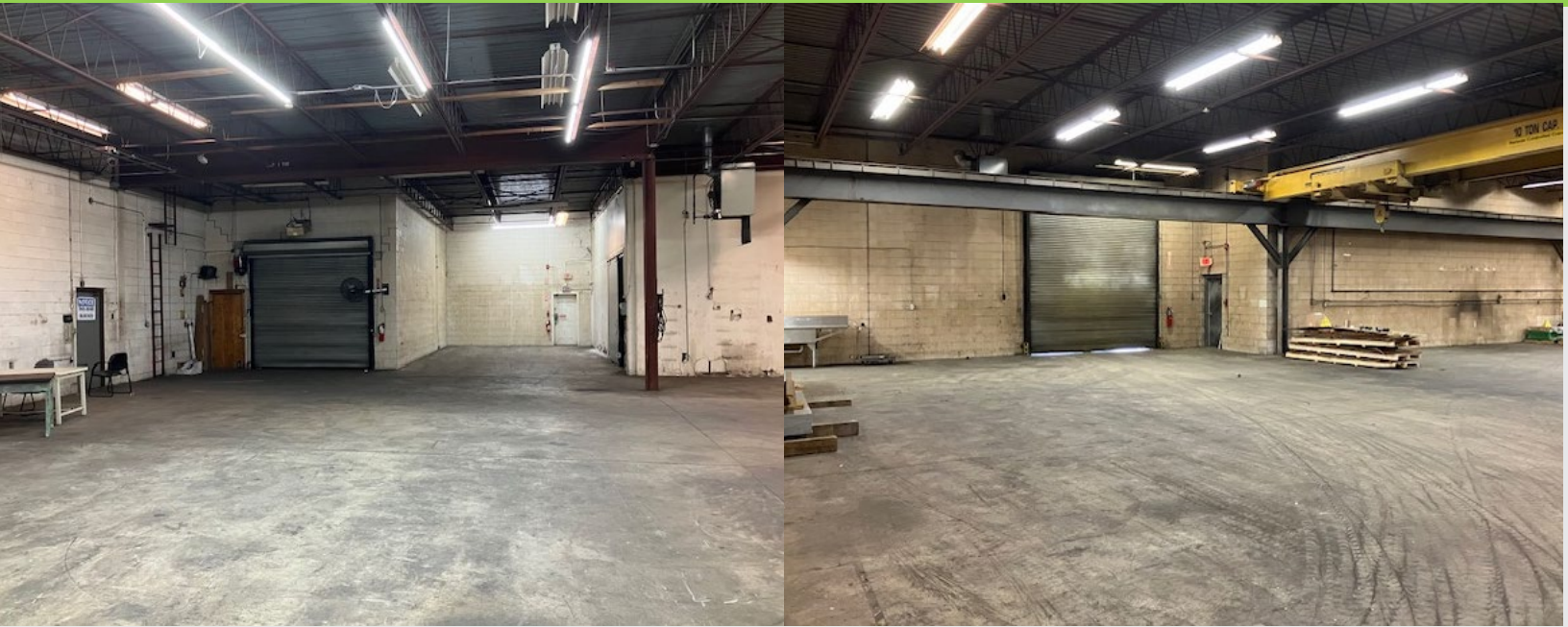


# 186

**ROUTE 206  
HILLSBOROUGH**



**±24,000 SF AVAILABLE FOR LEASE ON ±2.8 ACRES**



## PROPERTY HIGHLIGHTS

**Warehouse:** ±24,000 SF  
(±1,850 conditioned space)

**Ceiling Height:** 14' – 15'

**Power:** 800 Amps

**Loading:** 3 - Loading Docks (1 covered)  
1 - 12' wide Drive-In

**Column Spacing:** 50' x 50'

**Cranes:** Two - 10 Ton

**Zoning:** I-1 Light Industrial  
(Includes Medical Use)

**Location:** Frontage on Route 206.  
Minutes from Somerville circle.

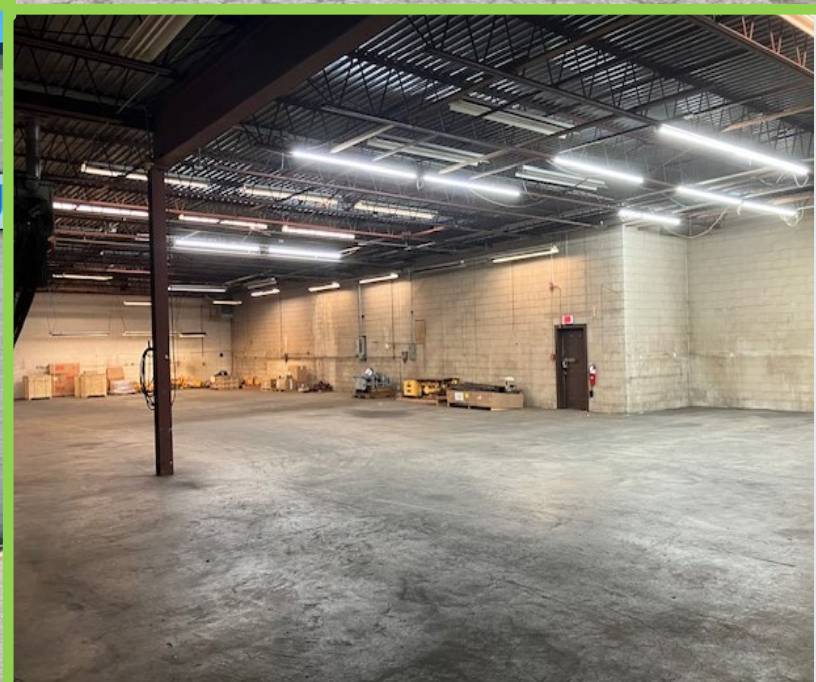
**Available:** Immediate

## Contact Information

**Warren F. Searles, Jr.**  
Director  
+1 973 908 6106  
warren.searles@cushwake.com

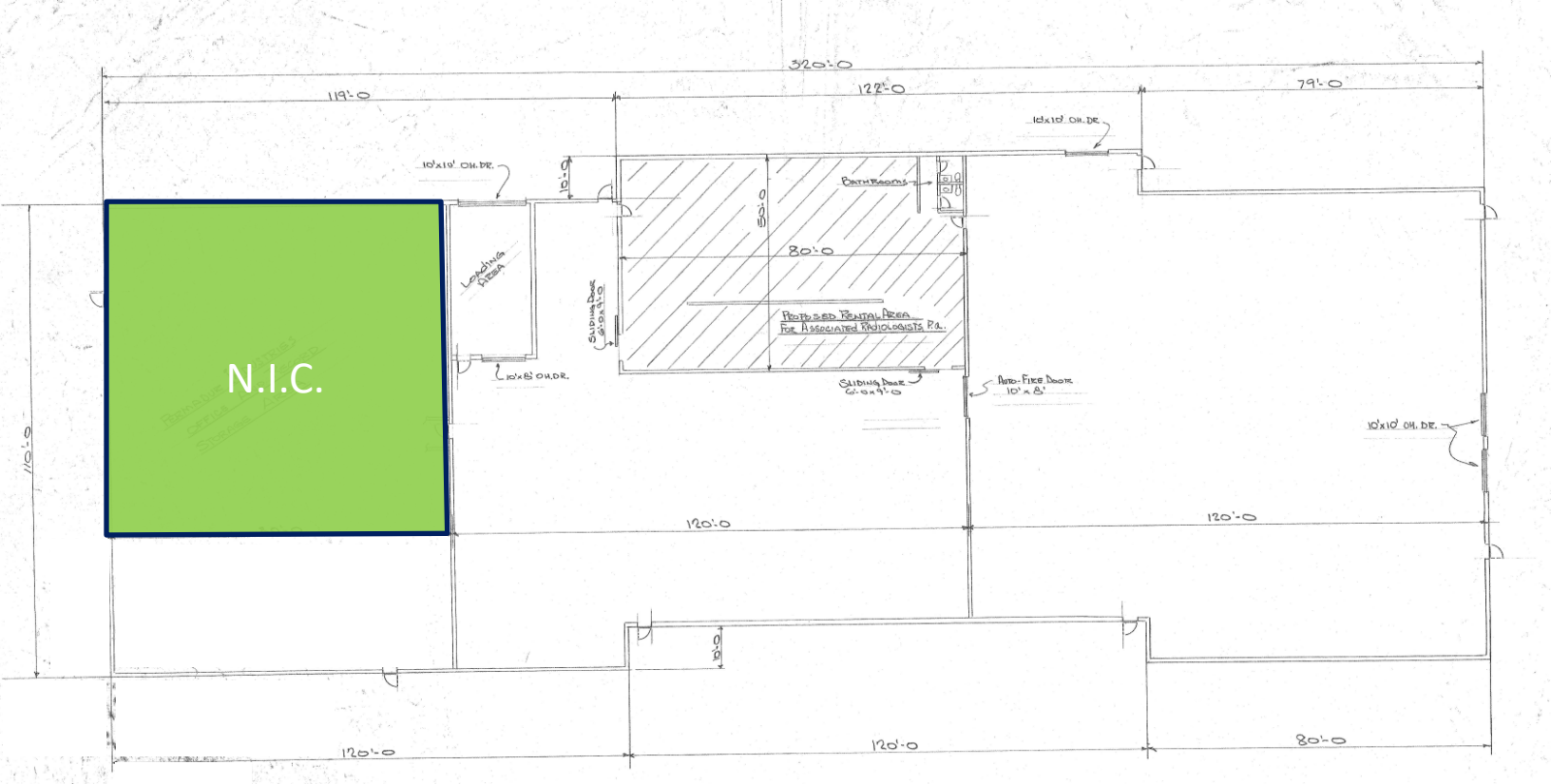


**Cushman & Wakefield U.S., Inc.**  
99 Wood Ave South, 8<sup>th</sup> Floor  
Iselin, NJ 08830  
www.cushmanwakefield.com



# 186

## ROUTE 206 HILLSBOROUGH



### Contact Information

**Warren F. Searles, Jr.**  
Director  
+1 973 908 6106  
warren.searles@cushwake.com

**CUSHMAN & WAKEFIELD**  
Cushman & Wakefield U.S., Inc.  
99 Wood Ave South, 8th Floor  
Iselin, NJ 08830  
www.cushmanwakefield.com

©2026 Cushman & Wakefield. All rights reserved. The material in this presentation has been prepared solely for information purposes and is strictly confidential. Any disclosure, use, copying or circulation of this presentation (or the information contained within it) is strictly prohibited, unless you have obtained Cushman & Wakefield's prior written consent. The views expressed in this presentation are the views of the author and do not necessarily reflect the views of Cushman & Wakefield. Neither this presentation nor any part of it shall form the basis of, or be relied upon in connection with any offer, or act as an inducement to enter into any contract or commitment whatsoever. NO REPRESENTATION OR WARRANTY IS GIVEN, EXPRESS OR IMPLIED, AS TO THE ACCURACY OF THE INFORMATION CONTAINED WITHIN THIS PRESENTATION, AND CUSHMAN & WAKEFIELD IS UNDER NO OBLIGATION TO SUBSEQUENTLY CORRECT IT IN THE EVENT OF ERRORS