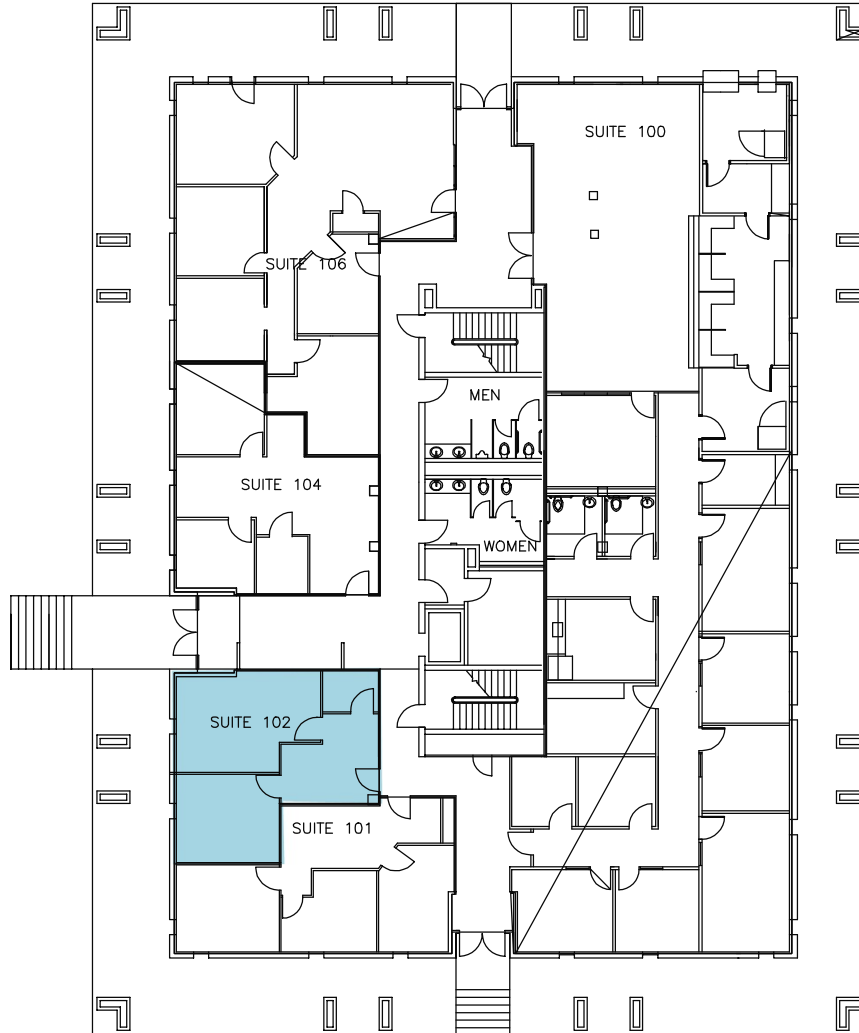


# 600 GREEN VALLEY RD

GREENSBORO, NC 27408

## GREEN VALLEY OFFICE PARK 1ST FLOOR AVAILABILITY



Suite 102	651 +/- RSF Available
-----------	-----------------------

**Kevin Kemp, SIOR**  
Managing Director  
+1 336 812 3307  
[kevin.kemp@cushwake.com](mailto:kevin.kemp@cushwake.com)

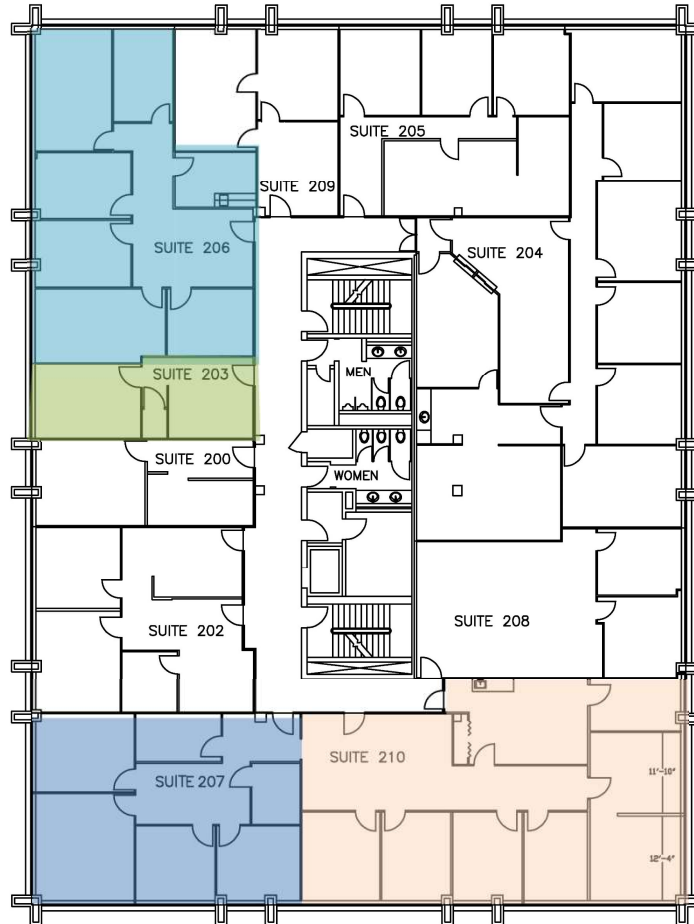
**Raffi Simel, SIOR**  
Director  
+1 336 289 2541  
[raffi.simel@cushwake.com](mailto:raffi.simel@cushwake.com)

628 Green Valley Road, Ste. 202  
Greensboro, NC 27408  
Main +1 336 668 9999  
[cushmanwakefield.com](http://cushmanwakefield.com)

# 600 GREEN VALLEY RD

GREENSBORO, NC 27408

## GREEN VALLEY OFFICE PARK 2ND FLOOR AVAILABILITY



<b>SUITE 206</b>	1,543 +/- RSF Available
<b>SUITE 203</b>	420 +/- RSF Available
<b>SUITE 207</b>	1,238 +/- RSF Available
<b>SUITE 210</b>	1,962 +/- RSF Available

**Kevin Kemp, SIOR**  
 Managing Director  
 +1 336 812 3307  
[kevin.kemp@cushwake.com](mailto:kevin.kemp@cushwake.com)

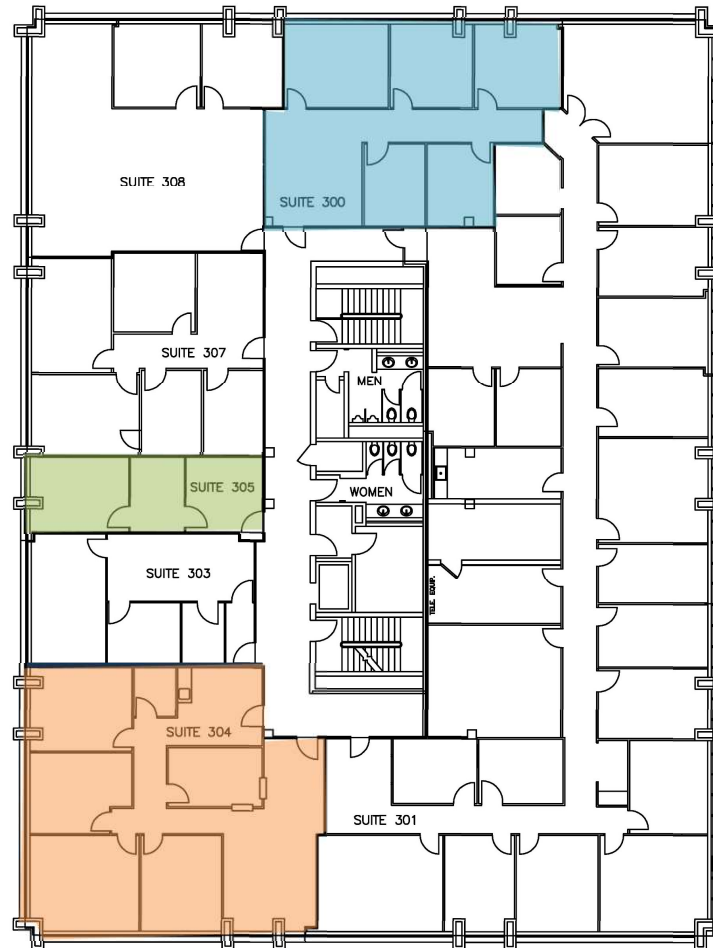
**Raffi Simel, SIOR**  
 Director  
 +1 336 289 2541  
[raffi.simel@cushwake.com](mailto:raffi.simel@cushwake.com)

628 Green Valley Road, Ste. 202  
 Greensboro, NC 27408  
 Main +1 336 668 9999  
[cushmanwakefield.com](http://cushmanwakefield.com)

# 600 GREEN VALLEY RD

GREENSBORO, NC 27408

## GREEN VALLEY OFFICE PARK 3RD FLOOR AVAILABILITY



<b>SUITE 300</b>	1,382 +/- RSF Available
<b>SUITE 305</b>	420 +/- RSF Available
<b>SUITE 304</b>	1,718 +/- RSF Available

**Kevin Kemp, SIOR**  
Managing Director  
+1 336 812 3307  
[kevin.kemp@cushwake.com](mailto:kevin.kemp@cushwake.com)

**Raffi Simel, SIOR**  
Director  
+1 336 289 2541  
[raffi.simel@cushwake.com](mailto:raffi.simel@cushwake.com)

628 Green Valley Road, Ste. 202  
Greensboro, NC 27408  
Main +1 336 668 9999  
[cushmanwakefield.com](http://cushmanwakefield.com)