

I-83 COMMERCE CENTER

Elm Drive | Shrewsbury, PA 17349

±611,040 SF Available



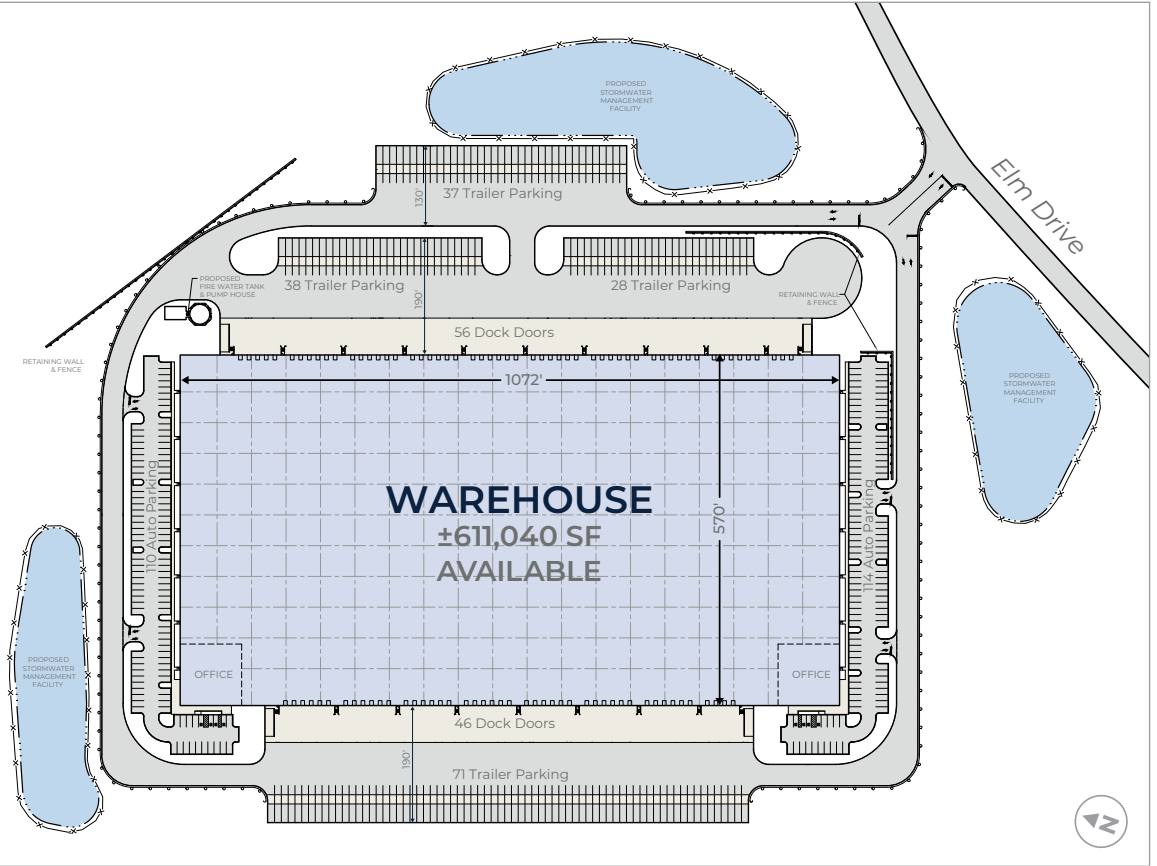
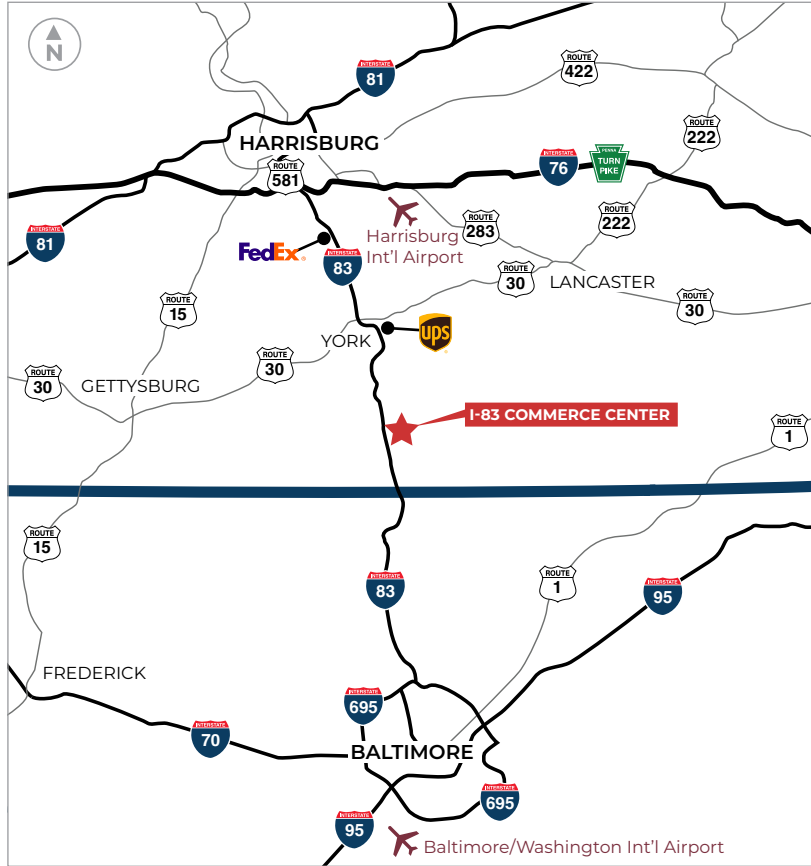
I-83 Commerce Center is a Class A, new construction, cross-dock facility in highly desirable York County in Central Pennsylvania. One of the I-81/I-78 industrial corridors strongest labor pockets, this project offers direct access to Interstate 83 via the newly constructed highway exit ramps and overpass onto Elm Drive and will serve as a staple point to Central PA's most critical highway networks, demand drivers, and population base. This project is designed with best-in-class building specifications including full building circulation, cross-dock and substantial car and trailer parking to accommodate a wide range of tenant requirements.



I-83 COMMERCE CENTER | MASTER PLAN

ELM DRIVE | SHREWSBURY, PA

PROPERTY OVERVIEW



611,040 SF Available



I-83 interchange allows for immediate access to park



40' clear



Premier infill location



Office build-to-suit



166 Spaces for Trailer Parking



Best-in-class building specifications



50 minutes to Port of Baltimore



242 Spaces for Car Parking

Development



JASON KUSHNER

610 445 8385 (o)
jason.kushner@hillwood.com

Leasing



GERRY BLINEBURY

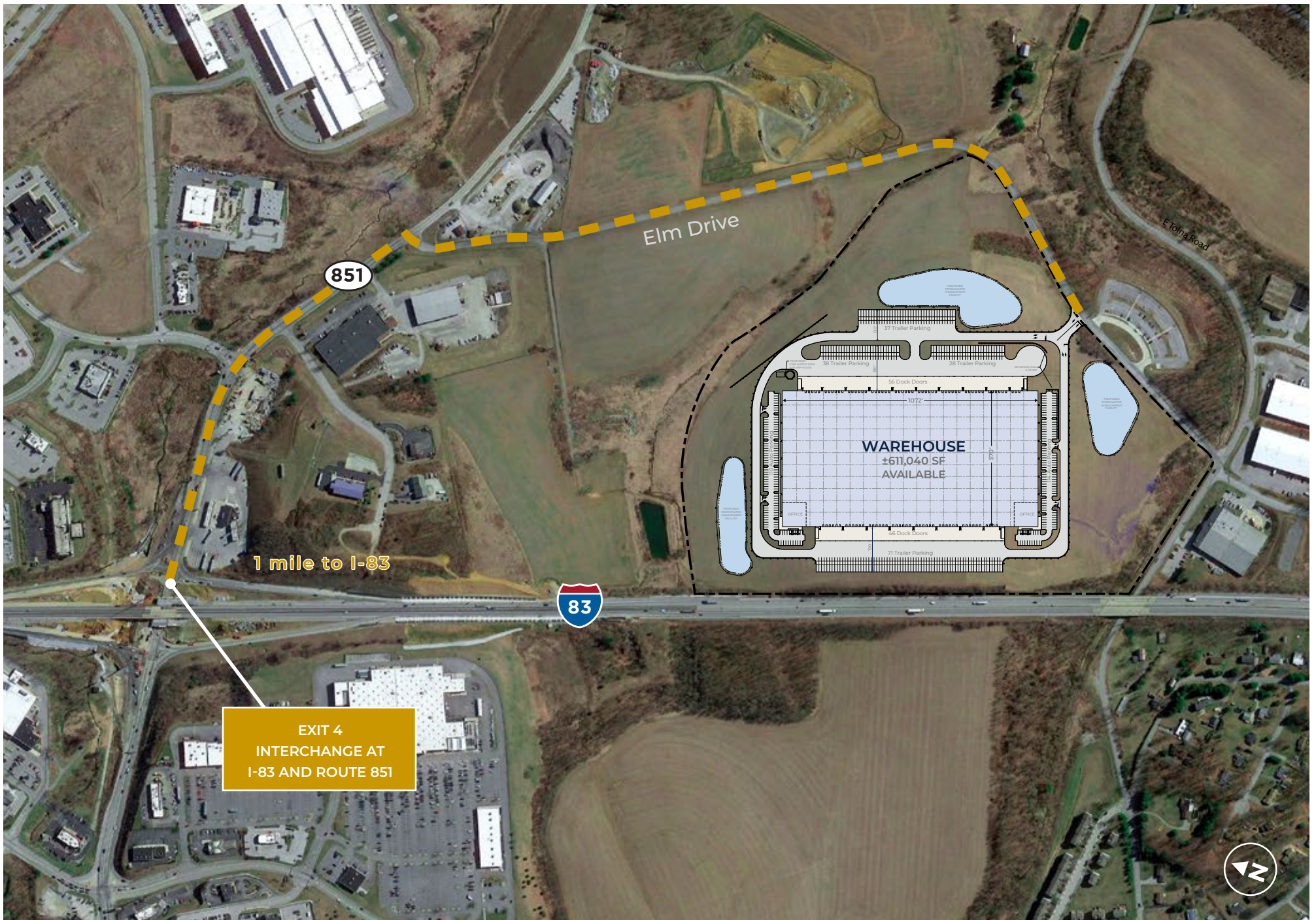
717 231 7291 (o)
gerry.blinebury@cushwake.com

ALEX WENGER

717 231 7298 (o)
alexandra.wenger@cushwake.com

COLLIN POTTER

717 231 7460 (o)
collin.potter@cushwake.com



I-83 COMMERCE CENTER | MASTER PLAN

ELM DRIVE | SHREWSBURY, PA

AREA INFORMATION



DRIVE TIMES

Interstate 83

1 mi. 2 min.

Interstate 76

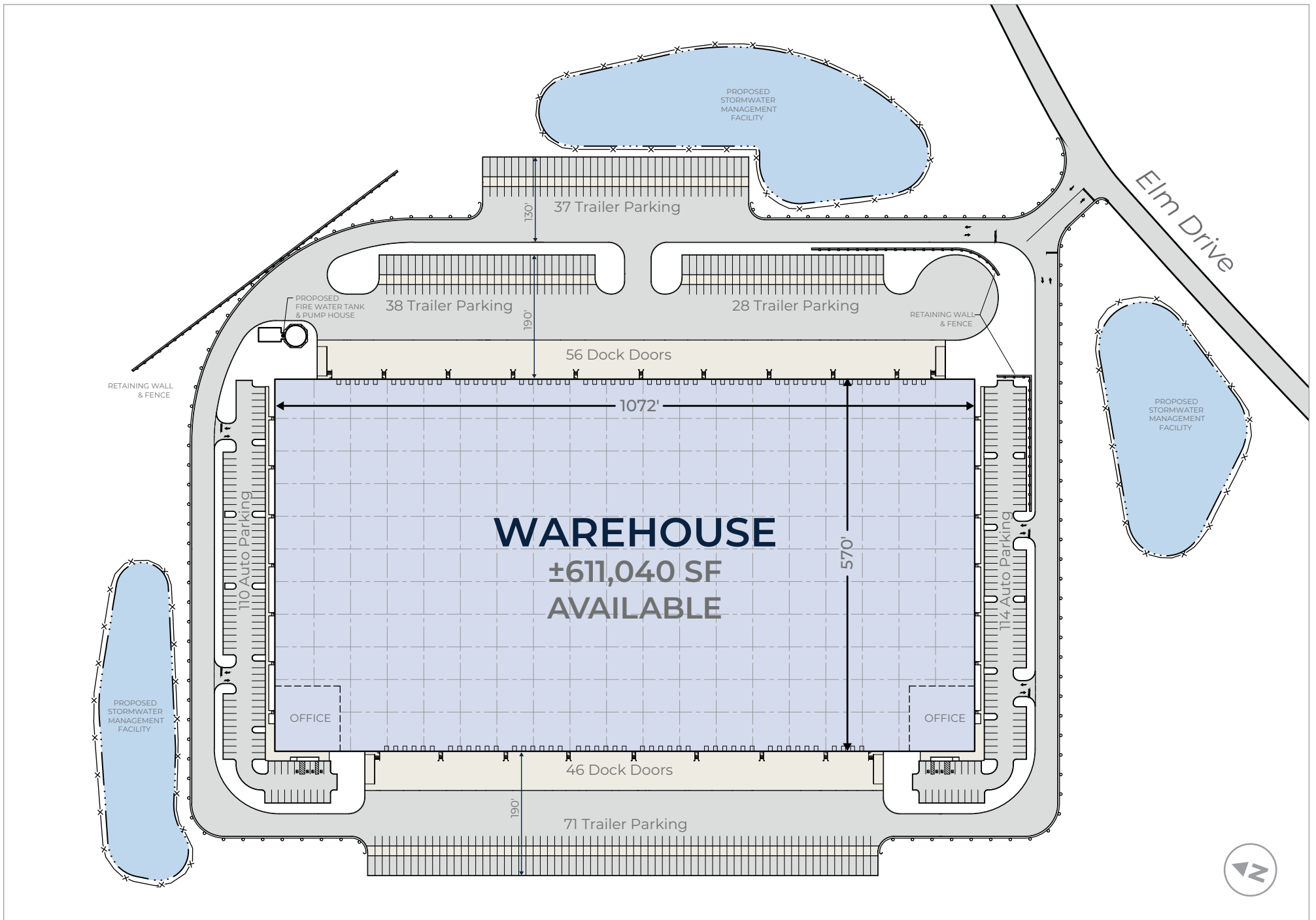
36.5 mi. 34 min.

Interstate 695

27.5 mi. 26 min.

Interstate 95

44.4 mi. 42 min.



CONTACT

DEVELOPMENT



JASON KUSHNER

610 445 8385 (o)
jason.kushner@hillwood.com

5050 W. Tilghman Street
Suite 435
Allentown, PA 18104
hillwood.com

LEASING



GERRY BLINEBURY

717 231 7291 (o)
gerry.blinebury@cushwake.com

4423 North Front Street
Harrisburg, PA 17110
cushmanwakefield.com

ALEX WENGER

717 231 7298 (o)
alexandra.wenger@cushwake.com

4423 North Front Street
Harrisburg, PA 17110
cushmanwakefield.com

COLLIN POTTER

717 231 7460 (o)
collin.potter@cushwake.com

4423 North Front Street
Harrisburg, PA 17110
cushmanwakefield.com



This information has been obtained from sources believed reliable, but has not been verified for accuracy or completeness. You should conduct a careful, independent investigation of the property and verify all information. Any reliance on this information is solely at your own risk. Hillwood and the Hillwood logo are service marks of Hillwood. All other marks displayed on this document are the property of their respective owners, and the use of such logos does not imply any affiliation with or endorsement of Hillwood. Photos herein are the property of their respective owners. Use of these images without the express written consent of the owner is prohibited.