

# TAMPA DISTRIBUTION CENTER

TAMPA  
TAMPA EAST SIDE

4735 TRANSPORT DRIVE  
TAMPA, FL 33605



FOR LEASE

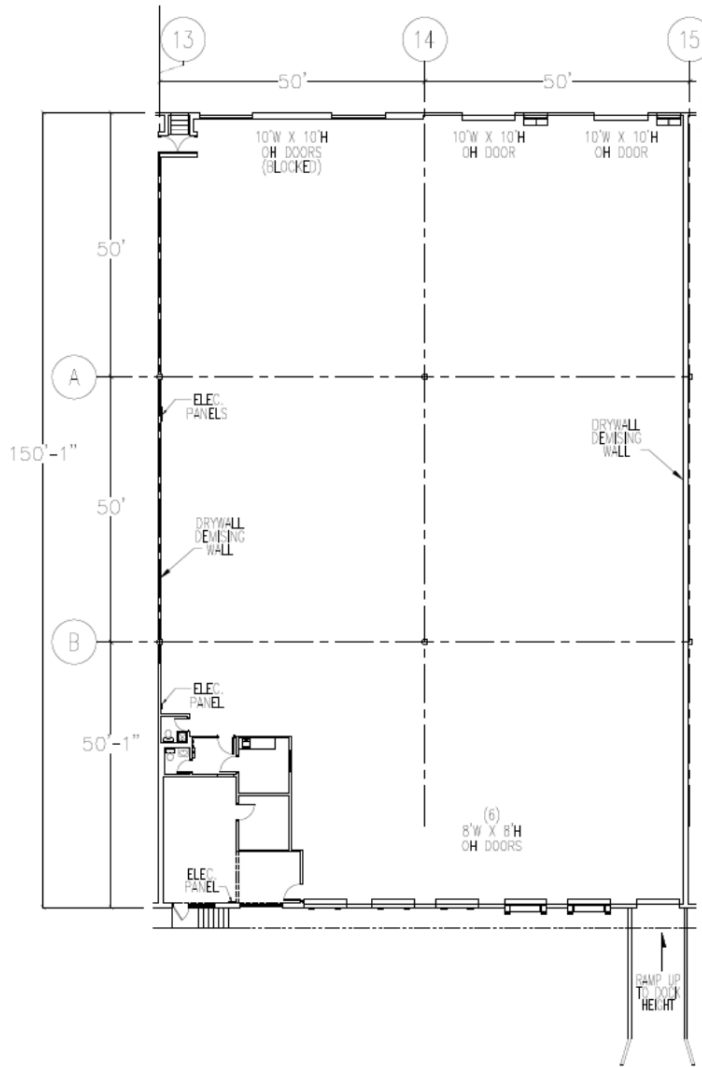
BLDG 2 | SUITE 4735

15,000 SF



LEASED BY





## LOCATION OVERVIEW

Tampa Distribution Center, situated at 4735 Distribution Drive, Tampa, FL 33605, is an industrial property suited for warehousing and distribution users. This facility provides a solution for businesses in need of a strategically located and highly efficient distribution center within Tampa's industrial hub, offering immediate access to I-4, I-75, the Lee Roy Selmon Expressway, and Adamo Drive (SR 60).

SR 60 .....	0.3 miles	1 minute
I-4 .....	0.8 miles	3 minutes
U.S. Hwy. 301 .....	2.9 miles	7 minutes
Selmon Expwy .....	3.0 miles	8 minutes
Port Tampa Bay .....	4.9 miles	12 minutes
I-75 .....	5.5 miles	15 minutes
Tampa Int'l Airport .....	10.5 miles	32 minutes

## BLDG 2 | SUITE 4735

TOTAL SF	15,000
OFFICE SF	813
OCCUPANCY	Available July 1, 2026
CLEAR HEIGHT	20'
LOADING	5 Dock-High Doors (2 with Edge of Dock Levelers) 1 Drive-in Ramp
SPRINKLERS	Wet Pipe

# CONTACT INFORMATION

4735 TRANSPORT DRIVE  
TAMPA, FL 33605

**Sam Korolos**

sam.korolos@cushwake.com  
(704) 989 1327

**Lisa Ross, SIOR**

lisa.ross@cushwake.com  
(813) 760 3209

**Melissa Watterworth**

melissa.watterworth@cushwake.com  
(813) 599 2190

**Trey Carswell, SIOR**

trey.carswell@cushwake.com  
(813) 230 6131

This document is for informational purposes only and does not constitute an offer or acceptance of a lease. Any lease agreement must be in writing and signed by the landlord. No representations or warranties are made except as expressly stated in a signed lease. Information is provided "as is" and may be subject to errors or change without notice.



LEASED BY

