



AVAILABLE FOR LEASE

1300
guadalupe

AUSTIN, TX 78701

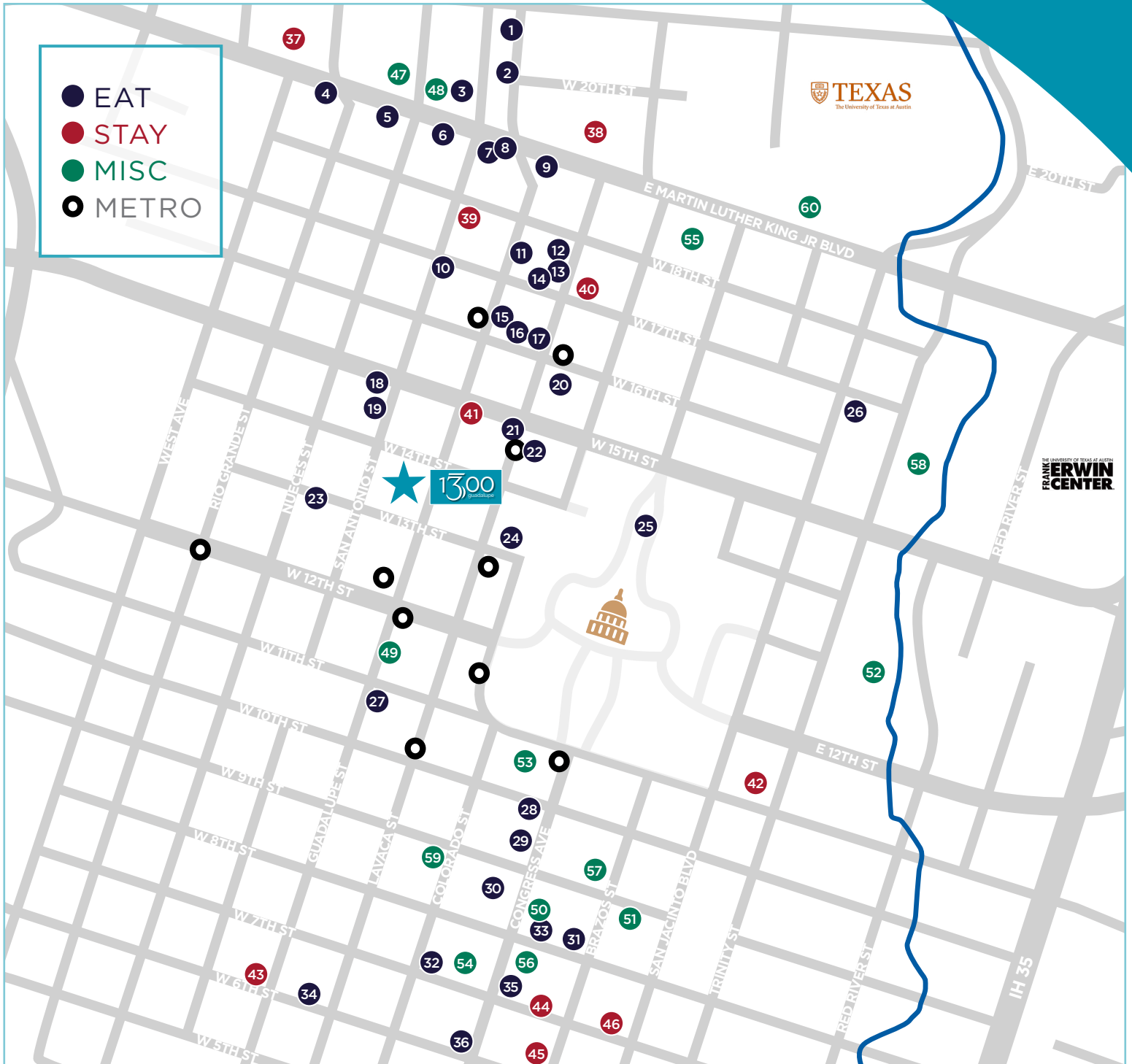




1300 guadalupe

ADDRESS	1300 Guadalupe Street Austin, TX 78701	YEAR BUILT	Complete interior & exterior renovation in 2008
SUBMARKET	Central Business District	AMENITIES	100% move-in ready creative office Newly renovated rooftop terrace overlooking downtown and the Texas State Capitol
TOTAL SF	46,525 SF		Desirable location two blocks from the Texas State Capitol
PARKING	<i>6 Reserved Spaces Per Suite</i>		Located just south of the The University of Texas at Austin campus
FLOORS	4		Excellent access off of 15th Street and Enfield Road
AVAILABILTY	Suite 100 - 8,966 SF** Suite 130 - 3,552 SF** Suite 300 - 12,032 SF Suite 400 - 4,949 SF* <i>*Contiguous up to 12,518 SF</i> <i>**Avail 8.1.24</i>		5 minutes from Mopac and I-35

LOCATION + AMENITIES



- | | | | | | |
|-------------------|-------------------------------|-------------------------------|------------------------------------|--|--|
| 1. Look Noodles | 11. Dive Bar & Lounge | 21. 15th Street Cafe | 31. Il Forte | 41. Double Tree Suites | 51. The UPS Store |
| 2. Coco's Cafe | 12. Lavaca Teppan | 22. Texas Chili Parlor | 32. Perry's Steakhouse & Grill | 42. La Quinta Inn | 52. Waterloo Neighborhood Park |
| 3. McDonald's | 13. El Mercado | 23. Subway | 33. Chipotle | 43. Extended Stay America | 53. Governor's Mansion |
| 4. Jimmy John's | 14. Arturo's Underground Cafe | 24. The Cloak Room | 34. Gloria's Latin Cuisine | 44. Intercontinental Stephen F. Austin | 54. The Contemporary Austin - Jones Center |
| 5. P-Terry's | 15. The Clay Pit | 25. Capitol Grill | 35. Roaring Fork | 45. The Driskill | 55. Bullock Texas State History Museum |
| 6. Chick-fil-A | 16. Thundercloud Subs | 26. Scholz Garden | 36. Starbucks | 46. Omni Austin | 56. Paramount Theater |
| 7. Raising Cane's | 17. Sushi Junai | 27. Cafe at Ned Granger Bldg. | 37. Hotel Ella | 47. City of Austin Fire Station | 57. Austin Club |
| 8. Papa John's | 18. Starbucks | 28. Quiznos | 38. AT&T Hotel & Conference Center | 48. The UPS Store | 58. Dell Medical School |
| 9. Pizza Hut | 19. Texadelphia | 29. Quattro Gatti Ristorante | 39. (Future) Chameleon Group Hotel | 49. The UPS Store | 59. Enterprise Rent-A-Car |
| 10. Olamaie | 20. KT's Snack Bar | 30. Jimmy John's | 40. Hampton Inn & Suites | 50. US Post Office | 60. Blanton Museum of Art |

AVAILABILITY

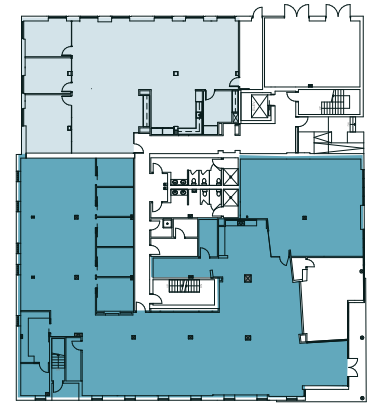
1300
guadalupe

First Floor

Suite 100 - 8,966 SF*

Suite 130 - 3,552 SF*

*Contiguous up to 12,518 SF



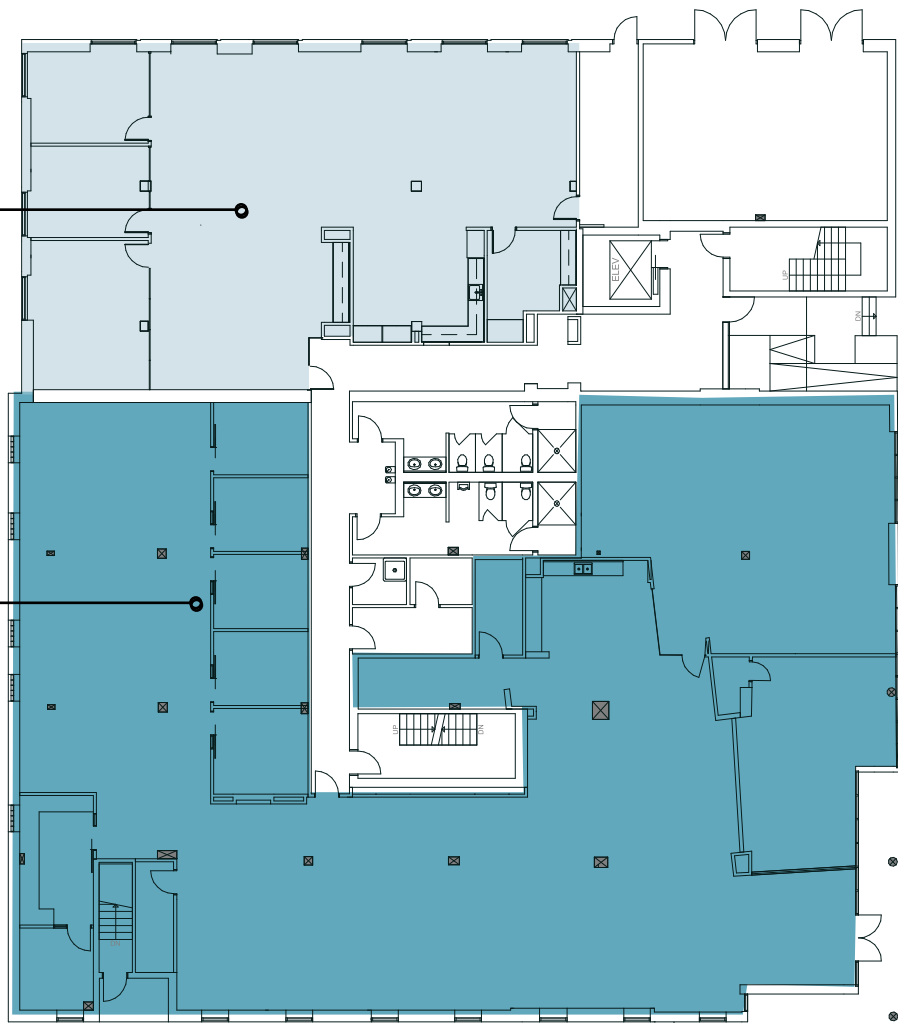
GUADALUPE STREET

13TH STREET

SUITE 130

3,552 SF

SUITE 100



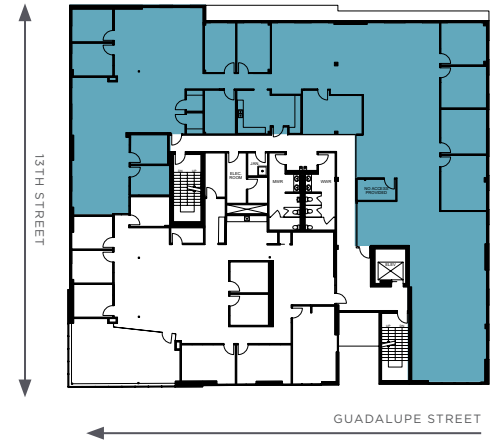
AVAILABILITY

1300
guadalupe

2nd Floor

Suite 200 - 9,356 SF

Available 2/1/25



AVAILABILITY

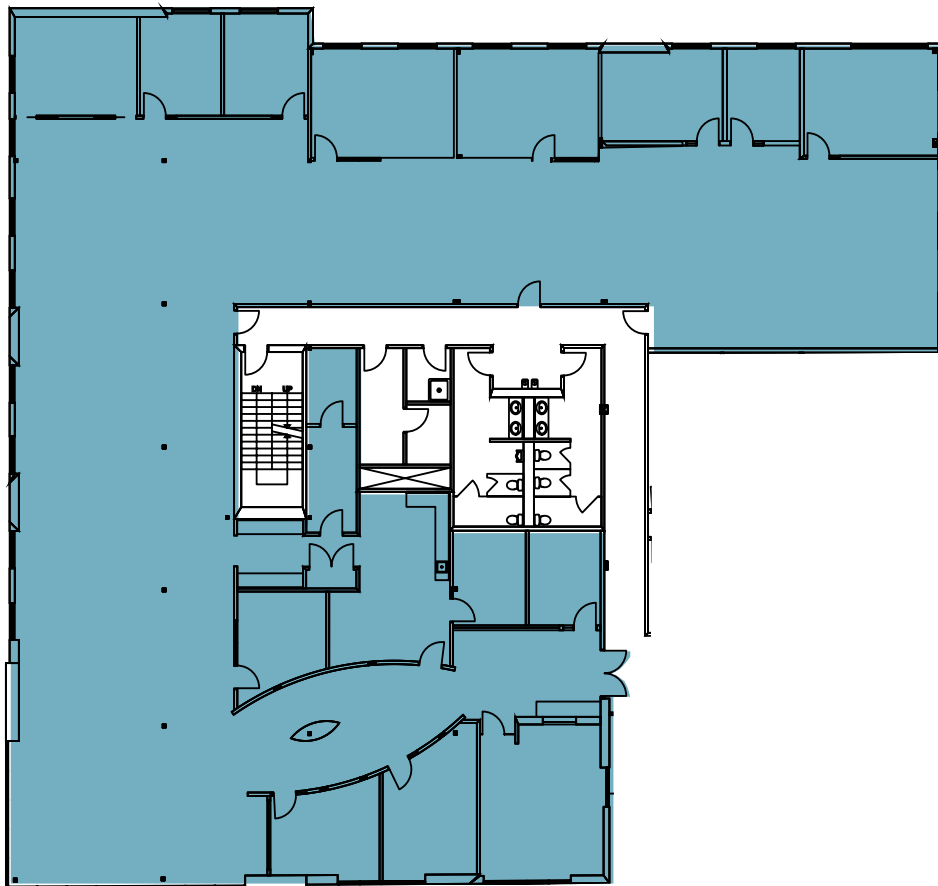
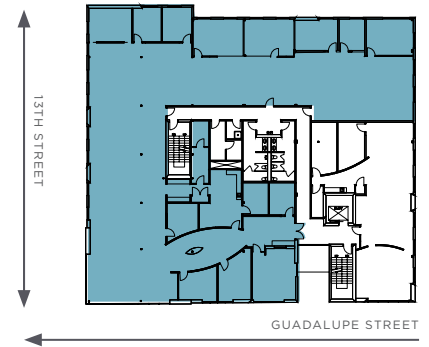
1300
guadalupe

Third Floor

Suite 300 - 12,032 SF

- Prominent building signage available
- 6 reserved parking spaces
- Move-in ready with super creative finishes
- Stunning Capitol views
- Amazing Rooftop Patio
- On-site showers

 **VIRTUAL TOUR**
CLICK HERE



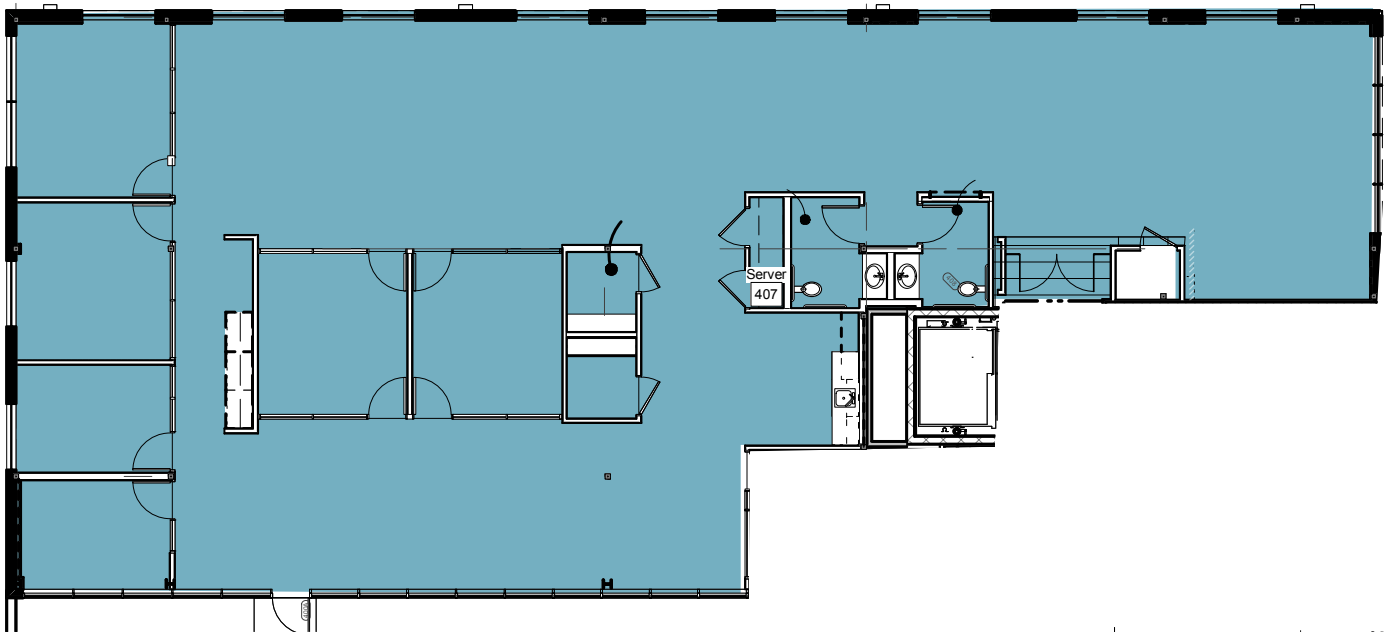
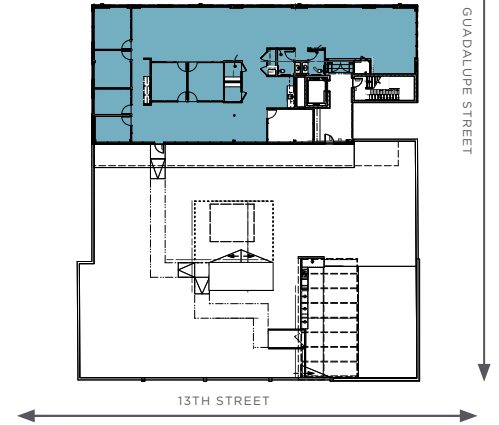
AVAILABILITY

1300
guadalupe

Fourth Floor

Suite 400- 4,949 SF

 **VIRTUAL TOUR**
CLICK HERE





1300
guadalupe

ROOFTOP

Features

- » Access available for all building tenants
- » Outdoor seating conducive for entertaining
- » Views overlooking Downtown Austin and the State Capitol
- » Outdoor kitchen and entertainment systems



Suite 100







Suite 400







CONTACT

BRIAN LIVERMAN

+1 512 814 3402

brian.liverman@cushwake.com

MATT FRIZZELL

+1 512 814 3404

matt.frizzell@cushwake.com

PAIGE LIVERMAN

+1 512 581 5167

paige.liverman@cushwake.com

1300
guadalupe

©2025 Cushman & Wakefield. All rights reserved. The information contained in this communication is strictly confidential. This information has been obtained from sources believed to be reliable but has not been verified. No warranty or representation, express or implied, is made as to the condition of the property (or properties) referenced herein or as to the accuracy or completeness of the information contained herein, and same is submitted subject to errors, omissions, change of price, rental or other conditions, withdrawal without notice, and to any special listing conditions imposed by the property owner(s). Any projections, opinions or estimates are subject to uncertainty and do not signify current or future property performance.