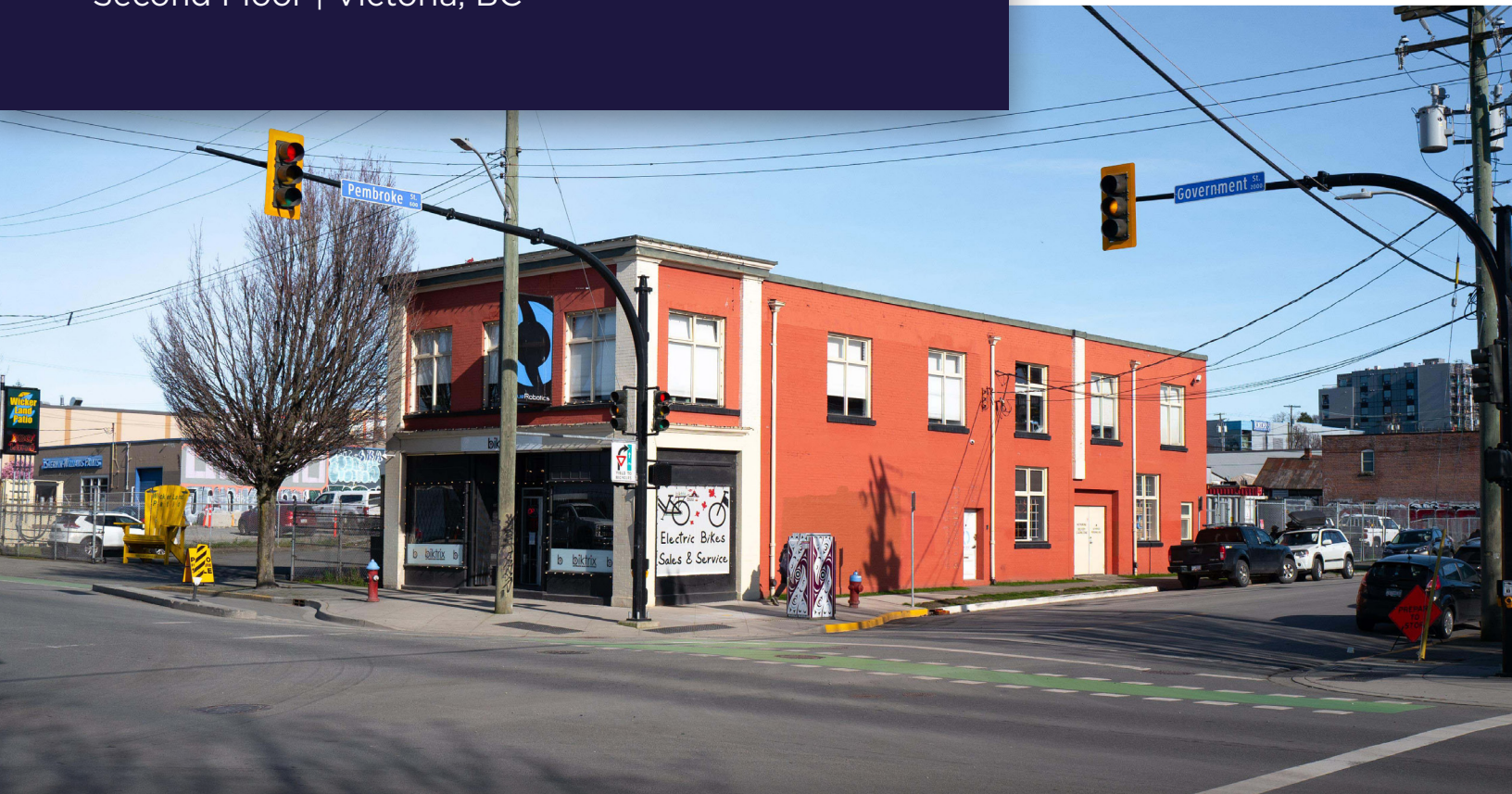


FOR SUBLEASE

2101 GOVERNMENT STREET

Second Floor | Victoria, BC

Marketed by



2,500 SF SECOND FLOOR SPACE AVAILABLE

OPPORTUNITY

Heritage office space in the old town heritage district of Victoria, this is a walk up, built out office space with ground floor secure yard access. This is a sublease to January 30th 2028. Prominent location on Government Street, with good exposure and building signage opportunity.

PROPERTY DETAILS

SECOND FLOOR	2,500 SF
ASKING RENT	\$5,000.00 gross per month plus applicable taxes.
TERM	Sublease to January 30, 2028

FEATURES

- Open plan working area
- Private offices
- In-suite washroom with shower

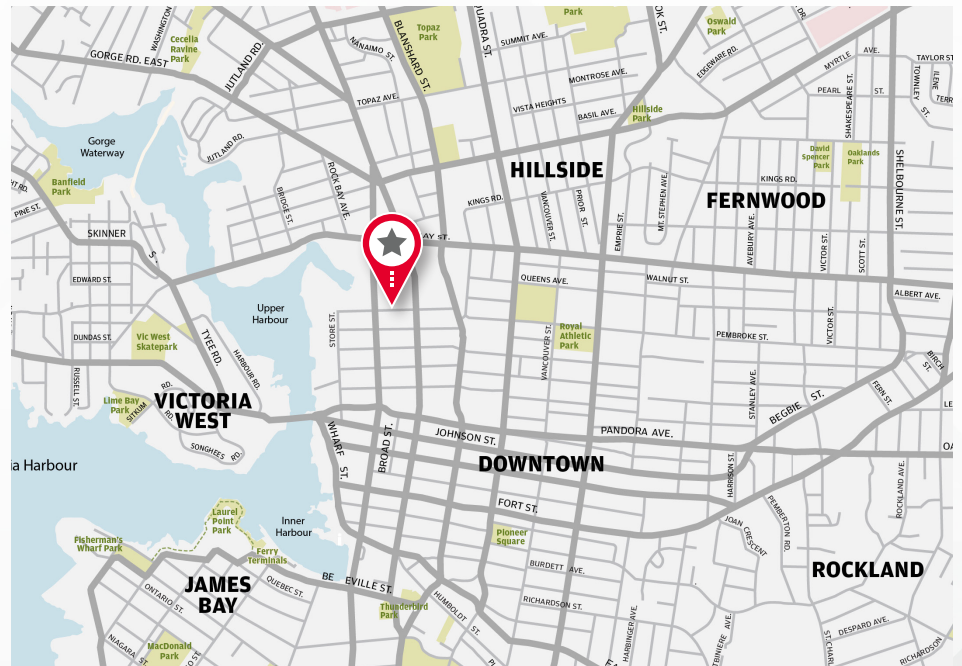
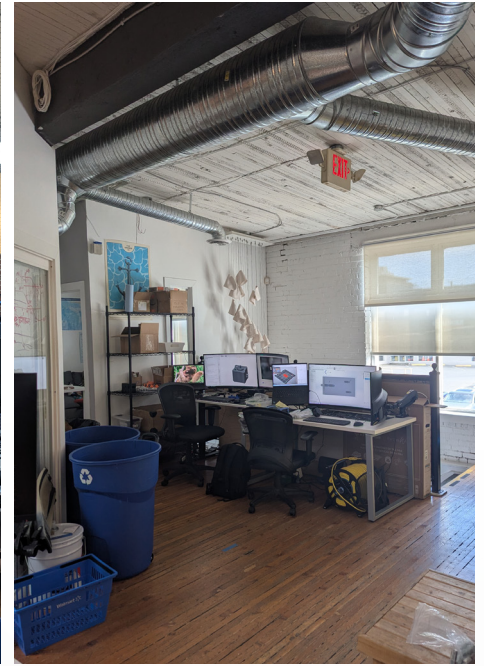
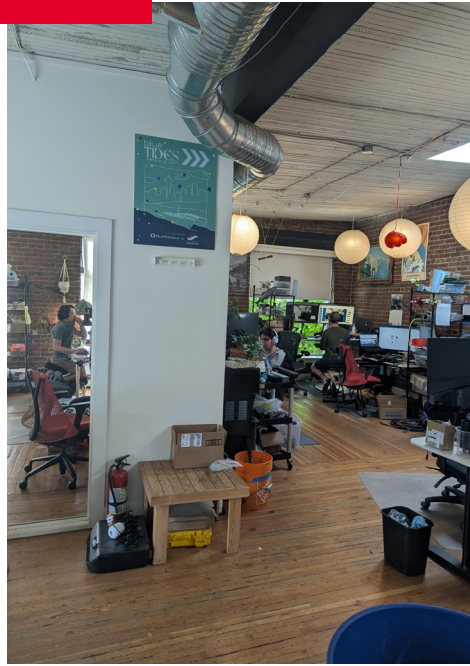
THE BUILDING

2101 Government Street is a 20th century Victorian two storey building, which features exposed brick, hardwood floors constructed in 1913.

ZONING

Industry, Arts & Innovation - 1 Zone (IAI-1) permits a variety of uses including, but not limited to, Art and Cultural Facility, Assembly, Automotive Repair, Brew Pub, Drinking Establishment, Food and Beverage Service, Light Industrial, Office, Personal Service, Retail Trade and Veterinary Clinic

PROPERTY PHOTOS



CONTACT US:

COLLEEN AUSTIN

Personal Real Estate Corporation
Associate Vice President
Commercial Sales & Leasing
Direct: +1 250 410 3003
Mobile: +1 250 516 3535
colleen.austin@cushwake.com

Cushman & Wakefield
+1 250 410 3000
730 View Street, Suite 420
Victoria, BC V8W 3Y7



cushmanwakefield.com