



177,973 SF

**5914-5918**

**W COURTYARD DRIVE**

AUSTIN, TX 78730



**CUSHMAN &  
WAKEFIELD**



**BRIDGEPOINT  
PLAZA**

# PROPERTY HIGHLIGHTS



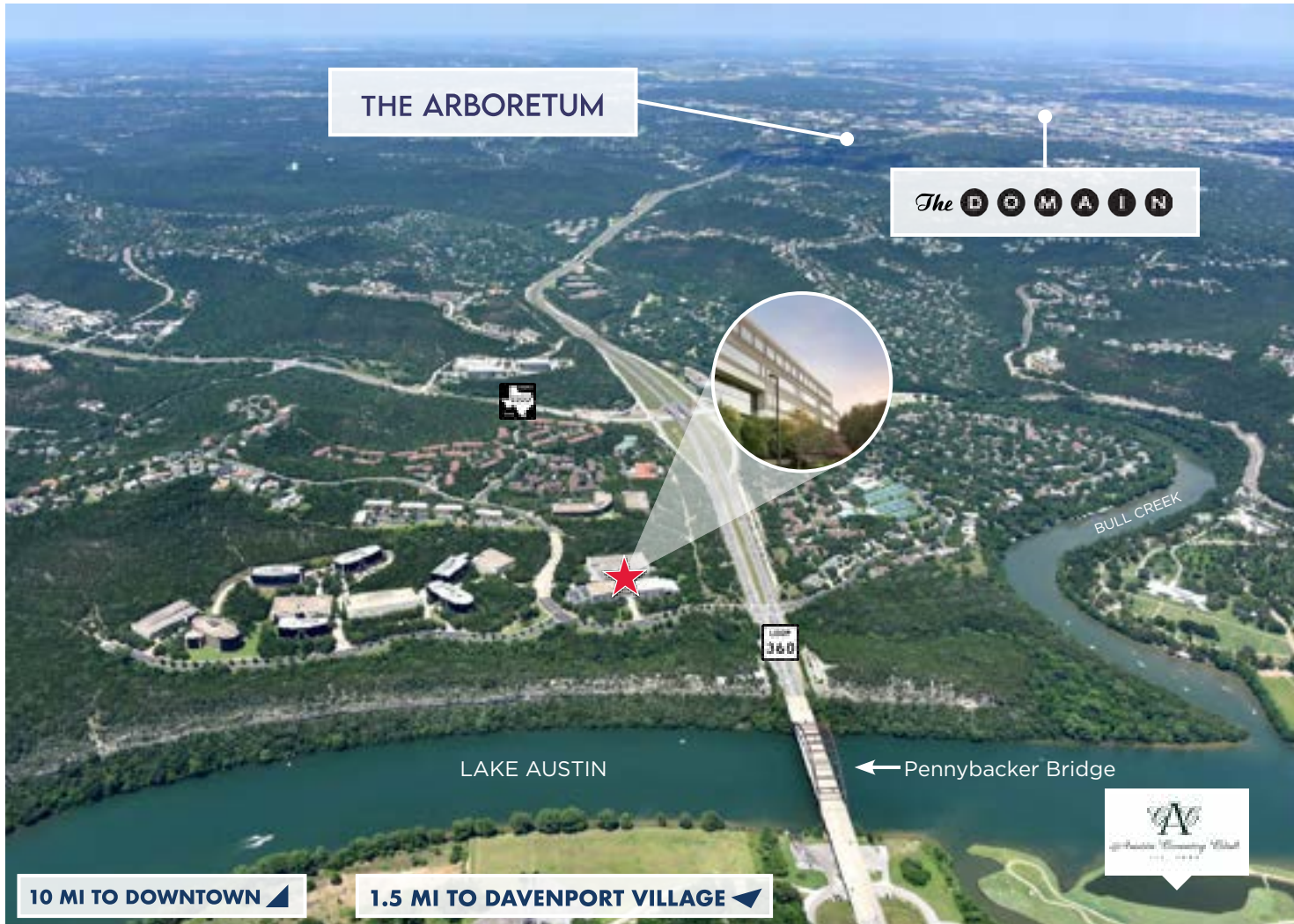
## FEATURES

<b>ADDRESS:</b>	5914-5918 W Courtyard Drive Austin, TX 78730	
<b>TOTAL SF:</b>	177,973 SF	
<b>SUBMARKET:</b>	Northwest   Loop 360	
<b>PARKING:</b>	3.3:1,000 SF (6-level parking garage)	
<b>BUILDINGS:</b>	Bridgepoint I - 5 Stories Bridgepoint II - 4 Stories	
	Bridgepoint Plaza 1	
	Suite 200A	8,758 SF
	Suite 240A	8,339 SF (White Box Condition)
<b>AVAILABILITY:</b>	Bridgepoint Plaza II	
	Suite 310B	4,234 SF
	Suite 360B	2,145 SF

## AMENITIES

- Situated in the hills overlooking Lake Austin with stunning downtown and Hill Country views
- Located on the highly desirable Capital of Texas Highway (Loop 360) which connects the western half of the city and provides access to major roads: Mopac Expressway (Loop 1), FM 2222, Bee Caves Road (FM 2244), Highway 71, Highway 290 and US Highway 183
- Direct access to a lighted intersection on Loop 360
- Brand new fitness center and outdoor amenities
- Austin's largest upscale retail and mixed-use destinations are a short drive north or south from the property: The Arboretum, The Domain, Barton Creek Mall and Davenport Village
- Centrally located with excellent accessibility and superior housing options nearby

# LOCATION



## NEARBY AMENITIES

### THE DOMAIN

1.8 MM SF Retail | 1.9 MM SF Office  
2,800 apartments | 775 Keys in 4 Hotels

Known as Austin's "Second Downtown"

Located 7 miles northeast of North  
Capital of Texas Highway

Culinary Dropout, Flower Child, North  
Italia, Velvet Taco, Shake Shack, Yard  
House, Sway, Tarka Indian Kitchen, The  
Dogwood, Punch Bowl Social, Kung Fu  
Saloon, iPic Theater, Sprinkles, Dick's  
Sporting Goods, Neiman Marcus, Tiffany  
& Co., Banana Republic, Westin

### THE ARBORETUM

1 MM+ SF Retail | 665,000 SF Office  
478 Room Renaissance Austin Hotel

100 AC, award-winning  
mixed-use development

The Cheesecake Factory, Barnes & Noble,  
Pottery Barn, Banana Republic, Gap, Jos.  
A. Bank, Chico's, Sephora, Trader Joe's

### DAVENPORT VILLAGE

129,000 SF retail center featuring  
boutique restaurants and retailers

Northeast corner of Loop 360 &  
Westlake Drive, directly across the lake  
from the Bridgepoint Plaza  
Maudie's Milagro, 360 Uno,  
Jade Restaurant

# PHOTOS



Newly upgraded lobbies



Covered walkway to parking



Fitness Center



New restrooms

# OUTDOOR AMENITIES



New outdoor seating



Breathtaking views



Relax in a comfy hammock



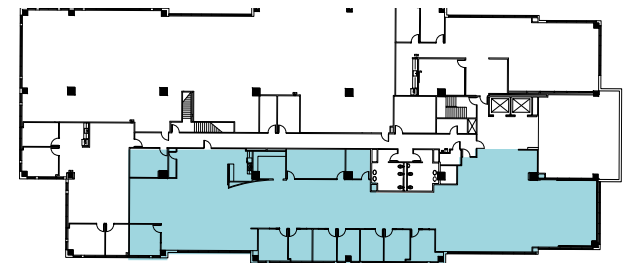
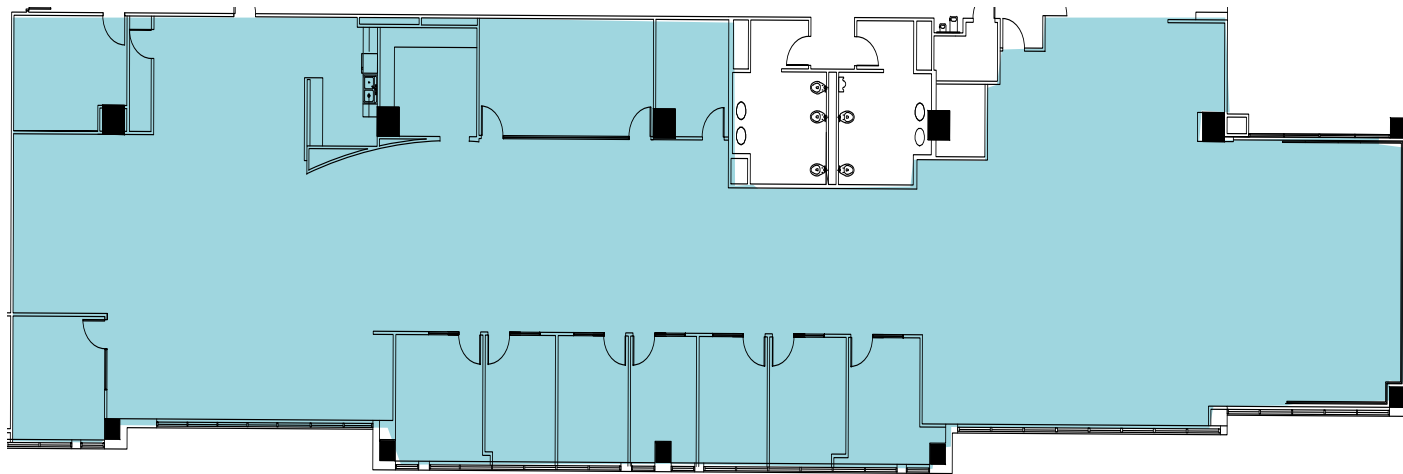
Rooftop basketball court

# AVAILABILITY



## BRIDGEPOINT PLAZA I

Suite 200A  
8,758 SF



# AVAILABILITY

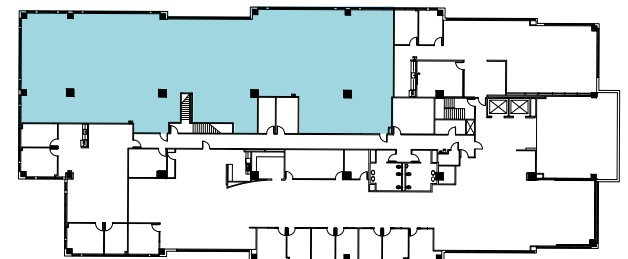
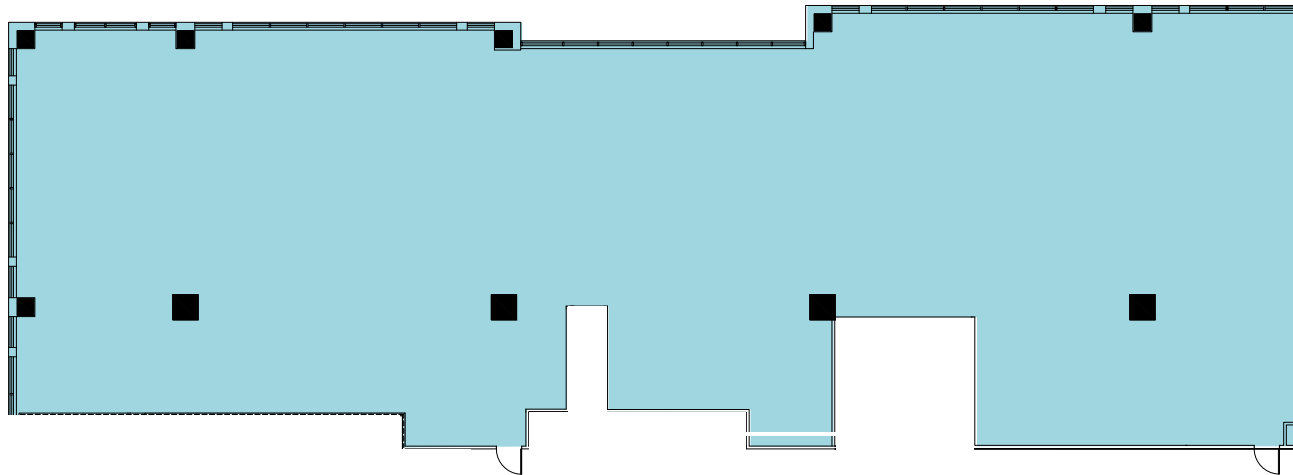


## BRIDGEPOINT PLAZA I

Suite 240A

8,339 SF\*

\*White box condition

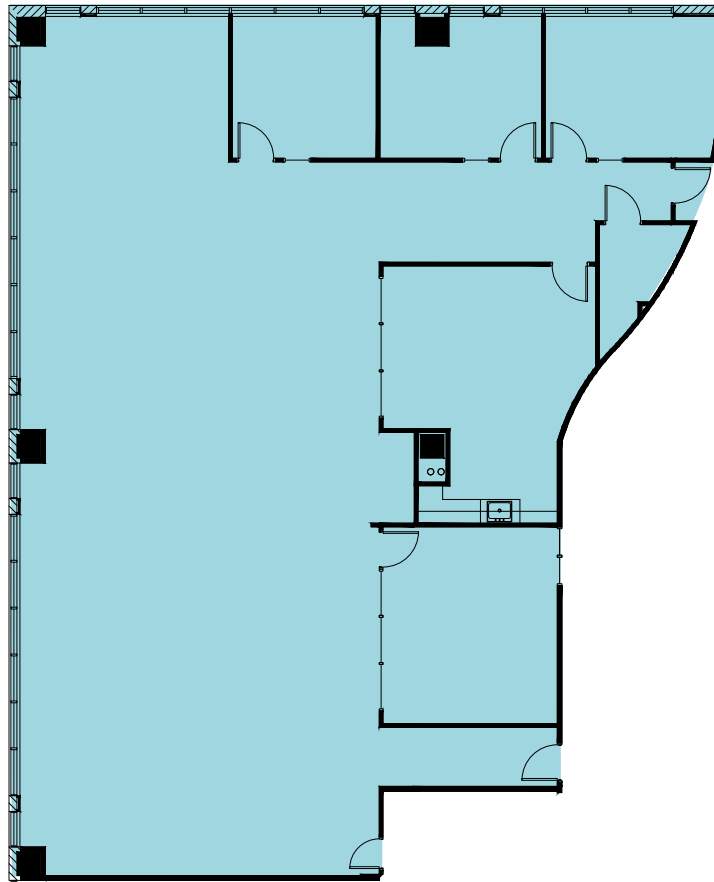


# AVAILABILITY



## BRIDGEPOINT PLAZA II

Suite 310B  
4,234 SF

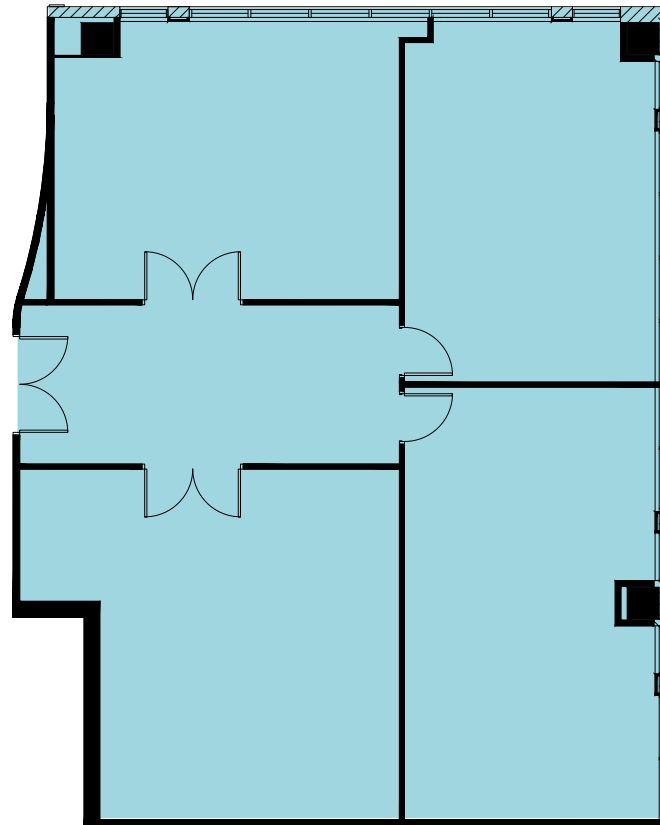


# AVAILABILITY



## BRIDGEPOINT PLAZA II

Suite 360B  
2,145 SF





**FOR MORE INFORMATION, CONTACT:**

**MATT FRIZZELL**  
Executive Director  
+1 512 814 3404  
matt.frizzell@cushwake.com

**BRIAN LIVERMAN**  
Executive Director  
+1 512 814 3402  
brian.liverman@cushwake.com

[cushmanwakefield.com](http://cushmanwakefield.com)



©2025 Cushman & Wakefield. All rights reserved. The information contained in this communication is strictly confidential. This information has been obtained from sources believed to be reliable but has not been verified. NO WARRANTY OR REPRESENTATION, EXPRESS OR IMPLIED, IS MADE AS TO THE CONDITION OF THE PROPERTY (OR PROPERTIES) REFERENCED HEREIN OR AS TO THE ACCURACY OR COMPLETENESS OF THE INFORMATION CONTAINED HEREIN, AND SAME IS SUBMITTED SUBJECT TO ERRORS, OMISSIONS, CHANGE OF PRICE, RENTAL OR OTHER CONDITIONS, WITHDRAWAL WITHOUT NOTICE, AND TO ANY SPECIAL LISTING CONDITIONS IMPOSED BY THE PROPERTY OWNER(S). ANY PROJECTIONS, OPINIONS OR ESTIMATES ARE SUBJECT TO UNCERTAINTY AND DO NOT SIGNIFY CURRENT OR FUTURE PROPERTY PERFORMANCE.