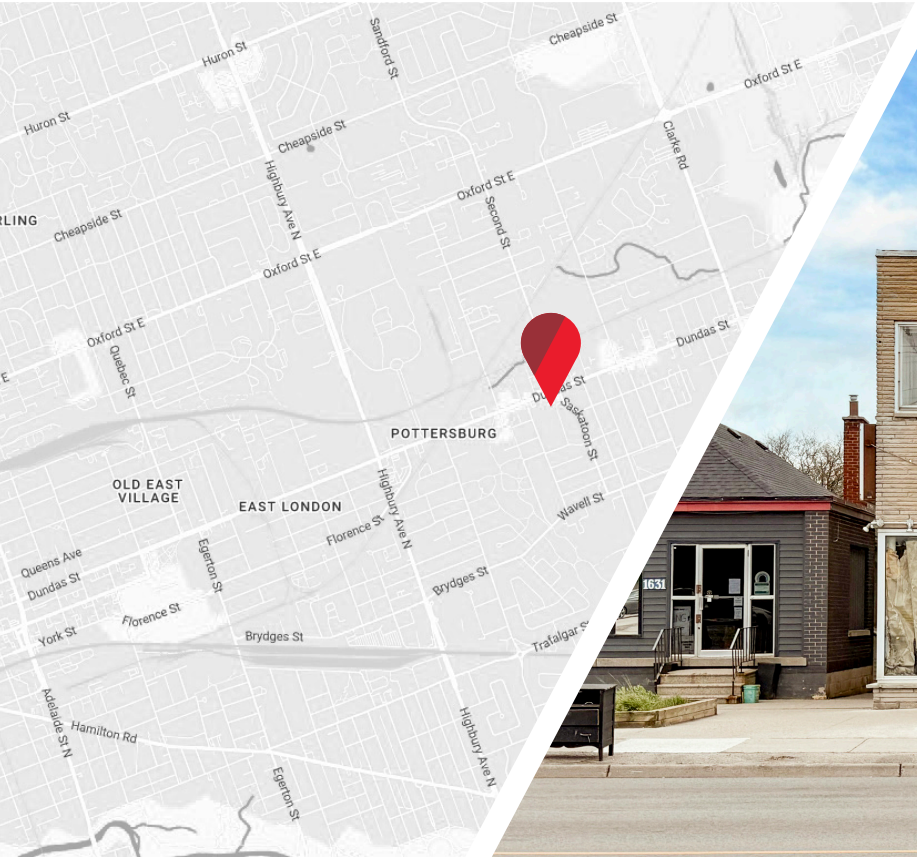


**CUSHMAN & WAKEFIELD**

Southwestern Ontario

**FOR LEASE**  
**1629 DUNDAS STREET EAST**  
*London, ON*



**NOW AVAILABLE GROUND-FLOOR RETAIL UNIT**

**AVAILABLE AREA**

**2,100  
SF**

**ASKING RENT**

**\$3,250  
PER MONTH**

**ZONING**

**ASA1/ASA2/  
ASA5**

**FOR MORE  
INFORMATION,  
PLEASE CONTACT:**

**DAN DESJARDINS**  
Sales Representative  
+1 519 931 7401  
dan.desjardins@cushwakeswo.com

**JAMESON LAKE**  
Sales Representative  
+1 519 438 8548  
jameson.lake@cushwakeswo.com

CUSHMAN & WAKEFIELD SOUTHWESTERN ONTARIO | 850 MEDWAY PARK DRIVE, SUITE 201, LONDON, ONTARIO N6G 5G6 | WWW.CUSHWAKESWO.COM

©2026 Cushman & Wakefield Southwestern Ontario, Real Estate Brokerage, Independently Owned and Operated. A Member of the Cushman & Wakefield Alliance. This information has been obtained from sources believed to be reliable but has not been verified. No warranty or representation, express or implied, is made as to the condition of the property (or properties) referenced herein or as to the accuracy or completeness of the information contained herein, and same is submitted subject to errors, omissions, change of price, rental or other conditions, withdrawal without notice, and to any special listing conditions imposed by the property owner(s). Any projections, opinions or estimates are subject to uncertainty and do not signify current or future property performance. All rights reserved.

# ABOUT THE PROPERTY

Now available for lease: Ground-floor commercial/retail unit featuring excellent street presence and a versatile open-concept layout suited to a wide range of retail, office, medical, wellness, and personal service uses. The space offers expansive storefront windows, providing outstanding exposure along the busy Dundas Street corridor while allowing for lots of natural light throughout

## ZONING

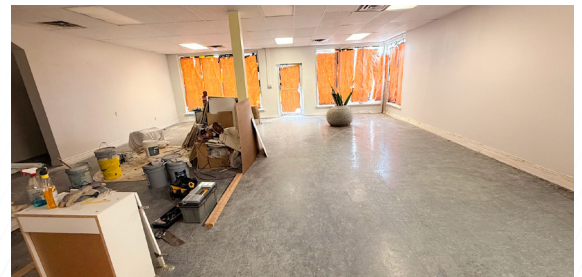
ASA1/ASA2/ASA5

## PARKING

Ample parking available

## PROPERTY HIGHLIGHTS / COMMENTS

- Strong pedestrian and vehicular traffic, this high-visibility location presents an exceptional opportunity for businesses seeking accessibility and prominence



## DAN DESJARDINS

Sales Representative  
+1 519 931 7401  
dan.desjardins@cushwakeswo.com

## JAMESON LAKE

Sales Representative  
+1 519 438 8548  
jameson.lake@cushwakeswo.com



**CUSHMAN &  
WAKEFIELD**

Southwestern Ontario

CUSHMAN & WAKEFIELD SOUTHWESTERN ONTARIO | 850 MEDWAY PARK DRIVE, SUITE 201, LONDON, ONTARIO N6G 5G6 | WWW.CUSHWAKESWO.COM

©2026 Cushman & Wakefield Southwestern Ontario, Real Estate Brokerage, Independently Owned and Operated. A Member of the Cushman & Wakefield Alliance. This information has been obtained from sources believed to be reliable but has not been verified. No warranty or representation, express or implied, is made as to the condition of the property (or properties) referenced herein or as to the accuracy or completeness of the information contained herein, and same is submitted subject to errors, omissions, change of price, rental or other conditions, withdrawal without notice, and to any special listing conditions imposed by the property owner(s). Any projections, opinions or estimates are subject to uncertainty and do not signify current or future property performance. All rights reserved.