

OFFICE FOR LEASE

550 EAST WASHINGTON ST
INDIANAPOLIS, IN 46204



FOR INFORMATION, CONTACT:

JOSHUA GRAHAM

Director
+1 317 639 0491
joshua.graham@cushwake.com

LUKE LONNEMAN

Associate
+1 317 352 5419
luke.lonneman@cushwake.com

JON R. OWENS, SIOR

Managing Director
+1 317 639 0447
jon.owens@cushwake.com

One American Square, Suite 1800
Indianapolis, IN 46282 | USA
Main +1 317 634 6363
Fax +1 317 639 0504
cushmanwakefield.com



\$18.50/SF, full service



Adjacent to Grid, the new retail/multifamily project by Milhaus



7,000 - 14,825 SF available on the 3rd floor



Close proximity to Downtown amenity base



Excellent access to I-65 & I-70



Abundant natural light



Redeveloped in 2016 with modern finishes, upgraded mechanical & electrical systems and new HVAC



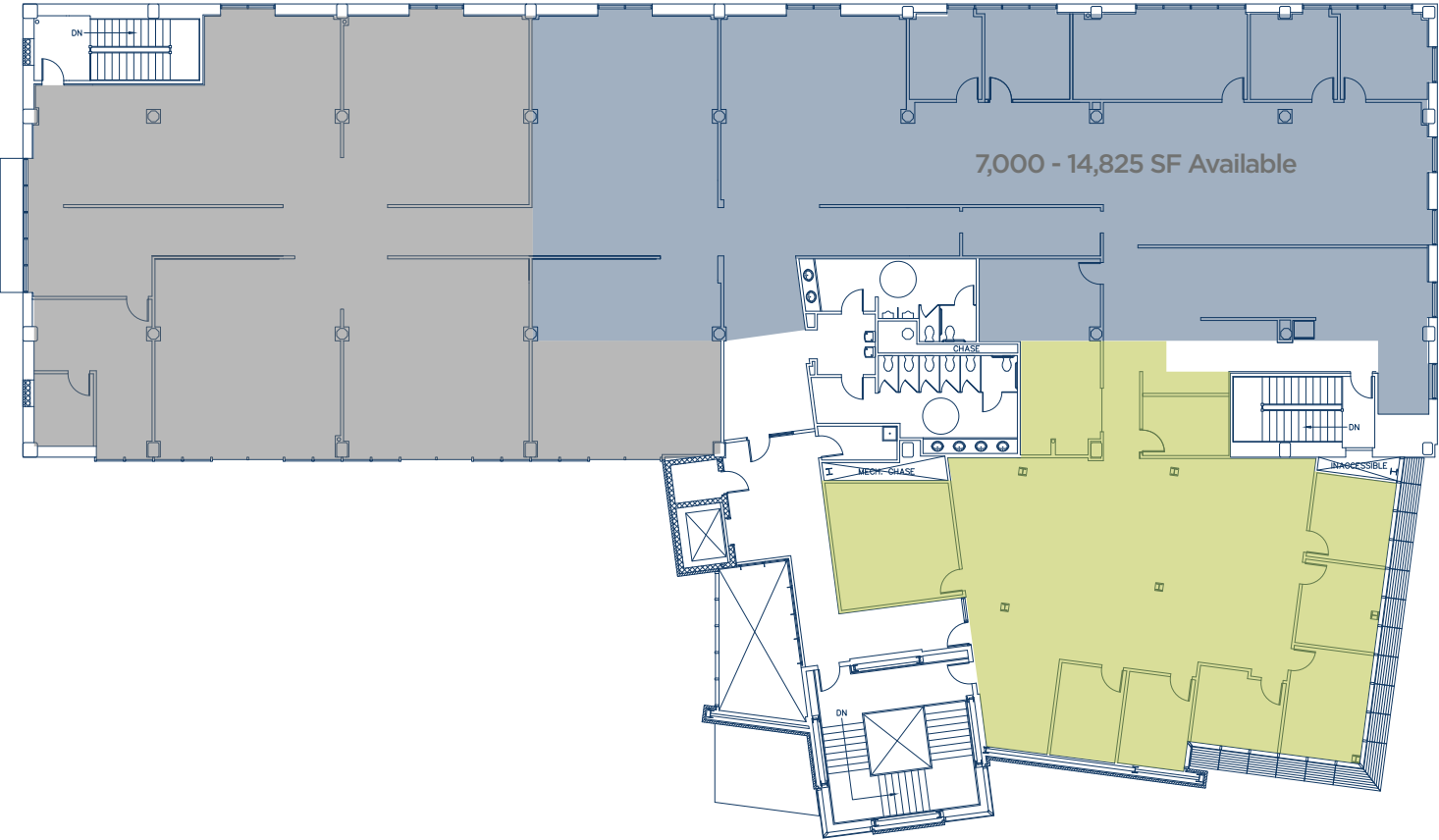
Recently renovated in 2023 as Milhaus' new corporate HQ

FOR LEASE

550 EAST WASHINGTON STREET



THIRD FLOOR

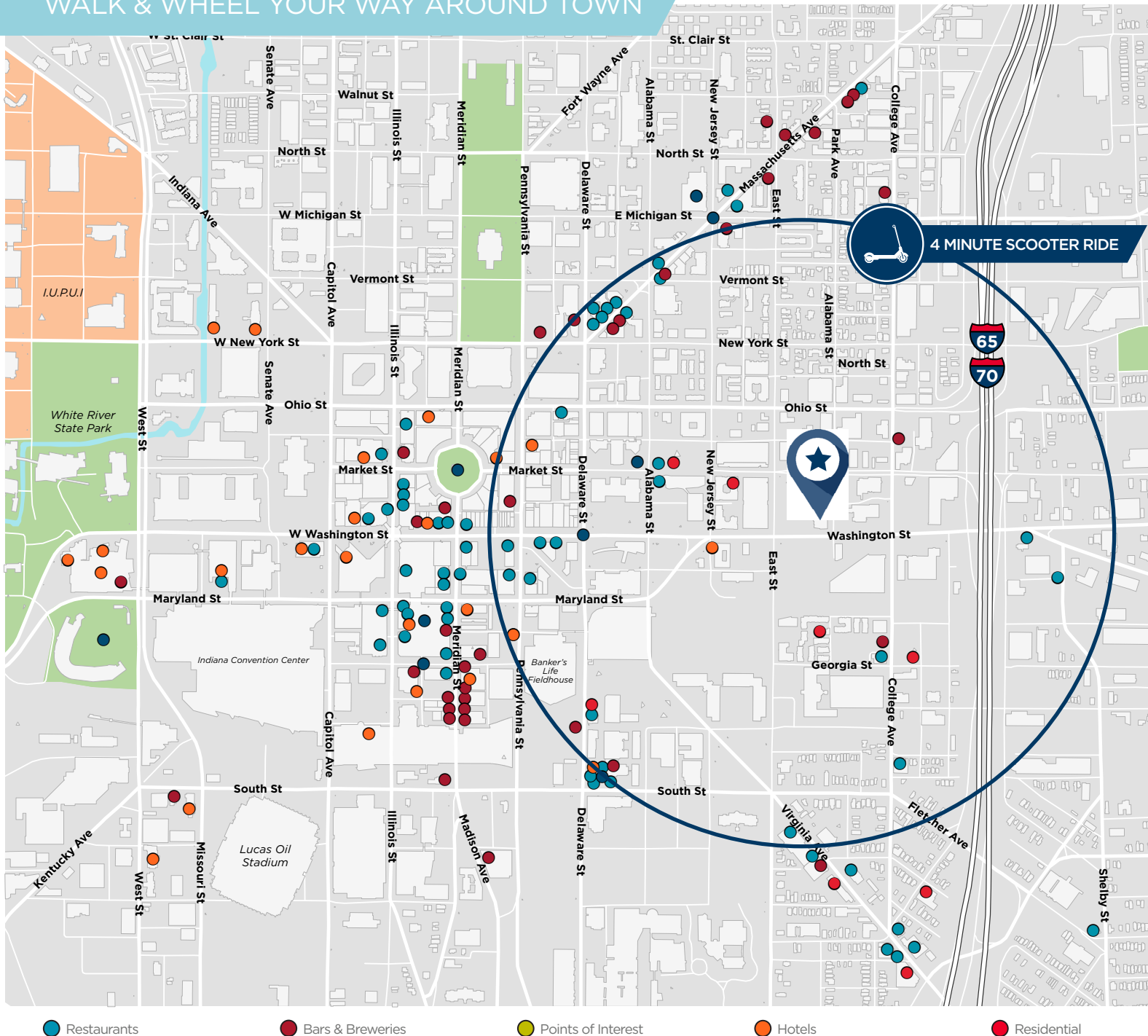


FOR LEASE

550 EAST WASHINGTON STREET



WALK & WHEEL YOUR WAY AROUND TOWN



JOSHUA GRAHAM
 Director
 +1 317 639 0491
joshua.graham@cushwake.com

LUKE LONNEMAN
 Associate
 +1 317 352 5419
luke.lonneman@cushwake.com

JON R. OWENS, SIOR
 Managing Director
 +1 317 639 0447
jon.owens@cushwake.com