

## Great Office Space on Lake Merritt Back on the Market



### Space Highlights

- ±3,301 Sq. Ft. with Potential to Add an Additional Space
- Five (5) Separate Office Spaces
- Large Meeting or Assembly Space
- Library & Kitchen
- Private Entrance (On Boden Way)
- Secured Yard Area for Parking
- Exclusive Men/Women Restroom

### Property Highlights

- Lake Merritt Location with Views
- Convenient Freeway Access
- Beautiful Architecture
- Non-Exclusive Access to Additional On Site Facilities

Asking Rent: \$6,500/Month, Gross (Net of Utilities & Janitorial)



### Andrew Schmieder

Director  
+1 510 465 8000  
andrew.schmieder@cushwake.com  
LIC #01828740

555 12th Street, Suite 1400  
Oakland, CA 94607  
main +1 510 465 8000  
fax +1 510 465 1350  
**cushmanwakefield.com**

### David Klein

Senior Vice President  
+1 415 828 2188  
david.klein@transwestern.com  
LIC #00780730

### Transwestern

101 2nd Street, Suite 300  
San Francisco, CA 94105  
main +1 415 489 1820  
**transwestern.com**





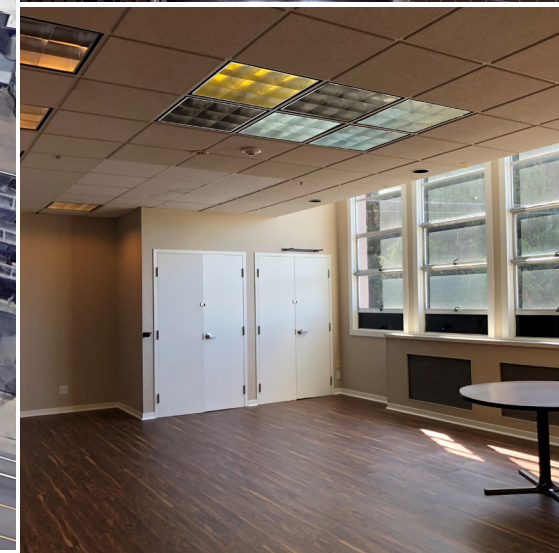
FOR LEASE

# 521 Boden Way & 2808 Lakeshore Avenue Oakland, CA



LAKE MERRITT

Interior Main Lobby



## Andrew Schmieder

Director  
+1 510 465 8000  
andrew.schmieder@cushwake.com  
LIC #01828740

## David Klein

Senior Vice President  
+1 415 828 2188  
david.klein@transwestern.com  
LIC #00780730

555 12th Street, Suite 1400  
Oakland, CA 94607  
main +1 510 465 8000  
fax +1 510 465 1350  
[cushmanwakefield.com](http://cushmanwakefield.com)

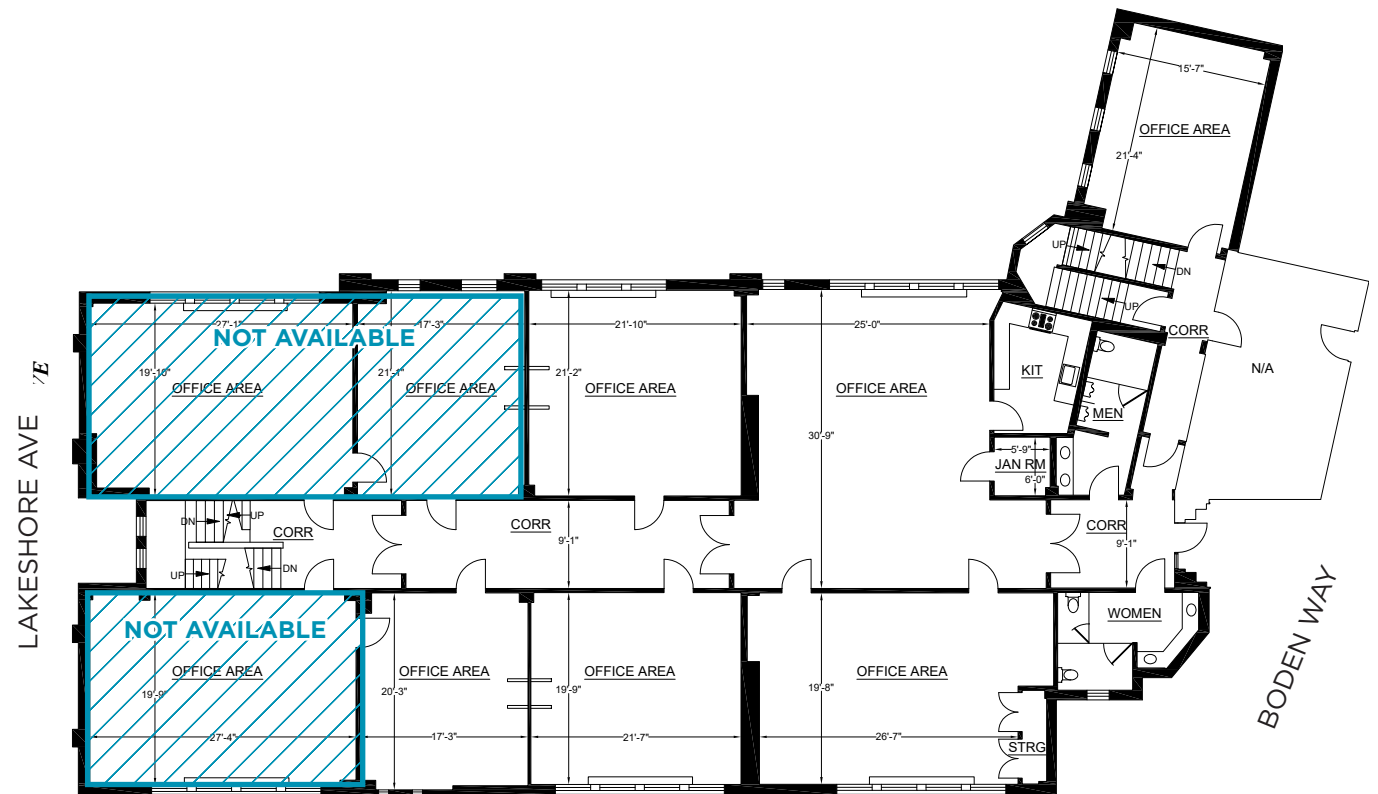
©2018 Cushman & Wakefield. All rights reserved. The information contained in this communication is strictly confidential. This information has been obtained from sources believed to be reliable but has not been verified. NO WARRANTY OR REPRESENTATION, EXPRESS OR IMPLIED, IS MADE AS TO THE CONDITION OF THE PROPERTY (OR PROPERTIES) REFERENCED HEREIN OR AS TO THE ACCURACY OR COMPLETENESS OF THE INFORMATION CONTAINED HEREIN, AND SAME IS SUBMITTED SUBJECT TO ERRORS, OMISSIONS, CHANGE OF PRICE, RENTAL OR OTHER CONDITIONS, WITHDRAWAL WITHOUT NOTICE, AND TO ANY SPECIAL LISTING CONDITIONS IMPOSED BY THE PROPERTY OWNER(S). ANY PROJECTIONS, OPINIONS OR ESTIMATES ARE SUBJECT TO UNCERTAINTY AND DO NOT SIGNIFY CURRENT OR FUTURE PROPERTY PERFORMANCE.





FOR LEASE

# 521 Boden Way & 2808 Lakeshore Avenue Oakland, CA



## Andrew Schmieder

Director

+1 510 465 8000

andrew.schmieder@cushwake.com

LIC #01828740

## David Klein

Senior Vice President

+1 415 828 2188

david.klein@transwestern.com

LIC #00780730

555 12th Street, Suite 1400

Oakland, CA 94607

main +1 510 465 8000

fax +1 510 465 1350

[cushmanwakefield.com](http://cushmanwakefield.com)