

FOR LEASE- PRICE REDUCED

E 62nd St & Keystone Ave, Indianapolis



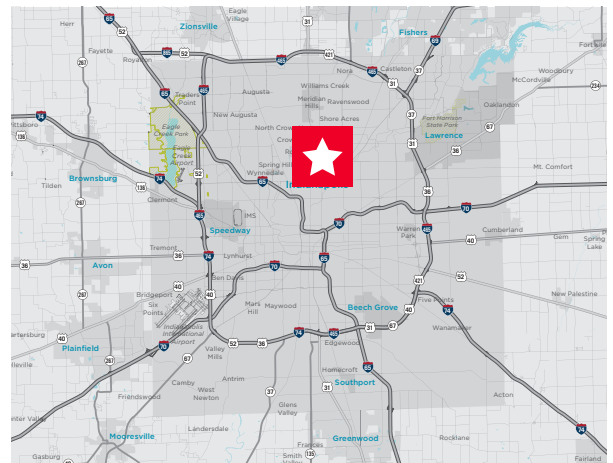
2,445 SF Endcap
Last Available Space!

PRICE REDUCED!

PROPERTY HIGHLIGHTS

Join Dogtopia in the newly renovated freestanding building on E 62nd Street (Broad Ripple Ave) between College and Keystone Avenues

- **Price reduced to \$29.75/SF**
- Excellent visibility
- Easy access
- Western endcap
- Traffic count exceeding 27,000 VPD
- Front door parking
- Surrounded by high-income dense residential
- Attractive new facade and exterior updates



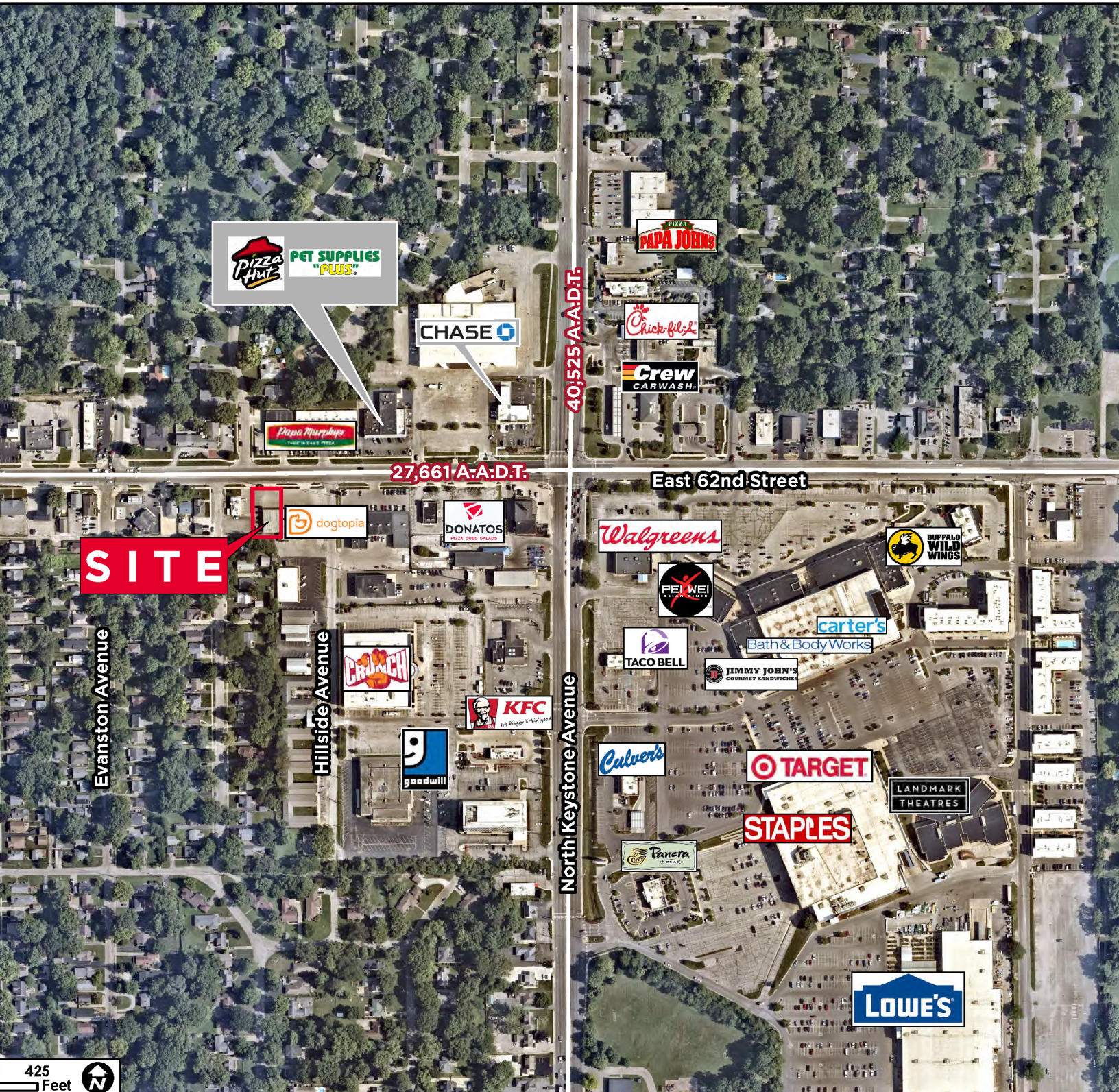
Contact

BILL FRENCH
Executive Director
+1 317 639 0430
bill.french@cushwake.com

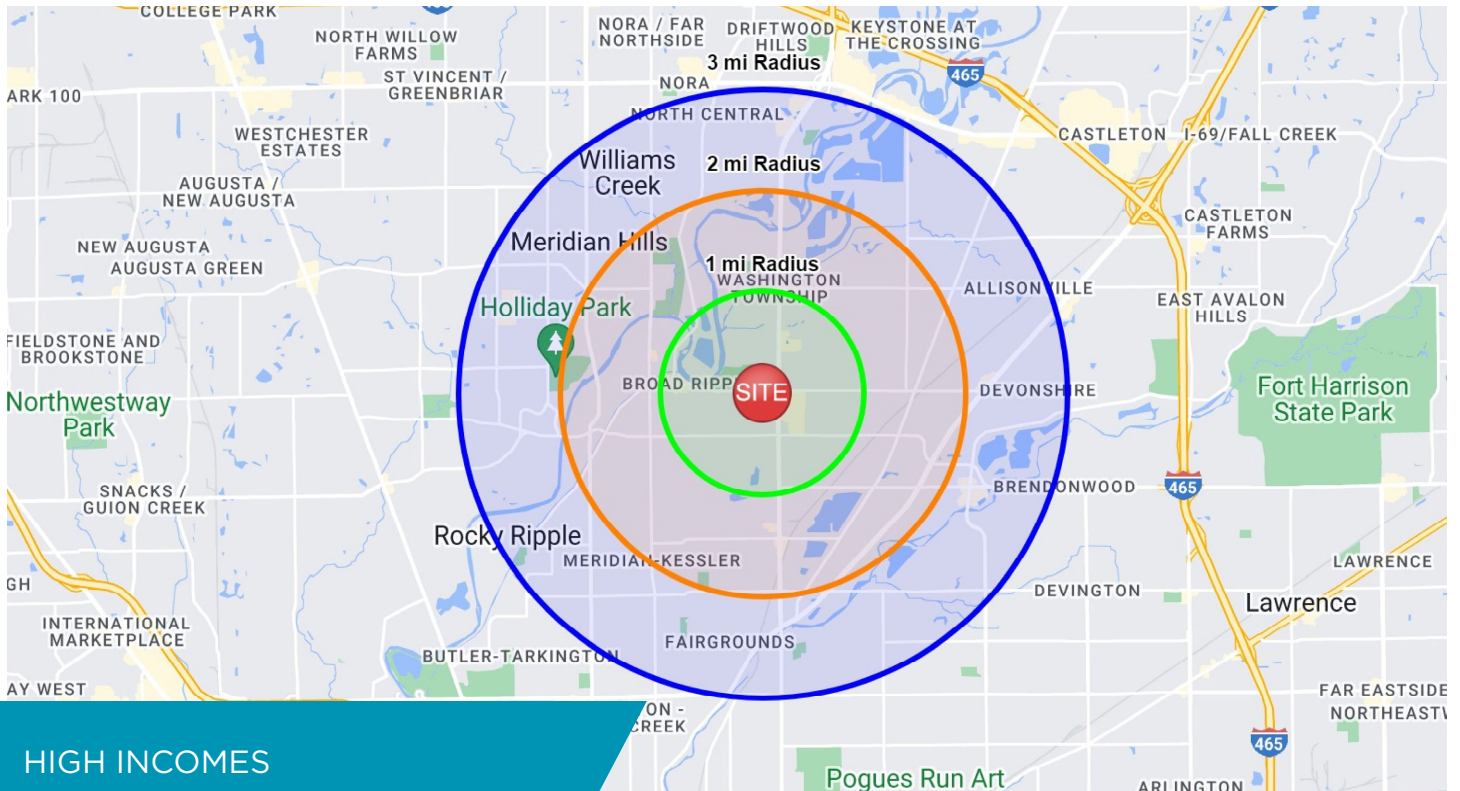
One American Square, Suite 1800
Indianapolis, IN 46282
Main +1 317 634 6363
Fax +1 317 639 0504

©2025 Cushman & Wakefield. All rights reserved. The information contained in this communication is strictly confidential. This information has been obtained from sources believed to be reliable but has not been verified. No warranty or representation, express or implied, is made as to the condition of the property (or properties) referenced herein or as to the accuracy or completeness of the information contained herein, and same is submitted subject to errors, omissions, change of price, rental or other conditions, withdrawal without notice, and to any special listing conditions imposed by the property owner(s). Any projections, opinions or estimates are subject to uncertainty and do not signify current or future property performance.

Aerial



Demographics



DEMOGRAPHICS

	1-Mile	2-Mile	3-Mile
Population	11,101	40,162	73,266
Daytime Population	6,448	24,485	54,429
Estimated Households	5,772	20,302	34,506
Avg Household Income	\$127,773	\$133,165	\$146,622

Photos



Contact

BILL FRENCH
Executive Director
+1 317 639 0430
bill.french@cushwake.com

One American Square, Suite 1800
Indianapolis, IN 46282
Main +1 317 634 6363
Fax +1 317 639 0504