

FOR LEASE
2,734 - 5,093 SF



100 MALLARD CREEK RD
LOUISVILLE, KY 40207

LAKEVIEW OFFICE BUILDING



PROPERTY HIGHLIGHTS

Class A 75,000-sf office building with beautiful landscaping

Located just off of Shelbyville Road and Bowling Blvd. near the Mall of St. Matthews and Dupont Medical Center

Easy access to I-64 and I-264

Floor to ceiling windows, Class A finishes

Building conference room

24-hour key card access security system



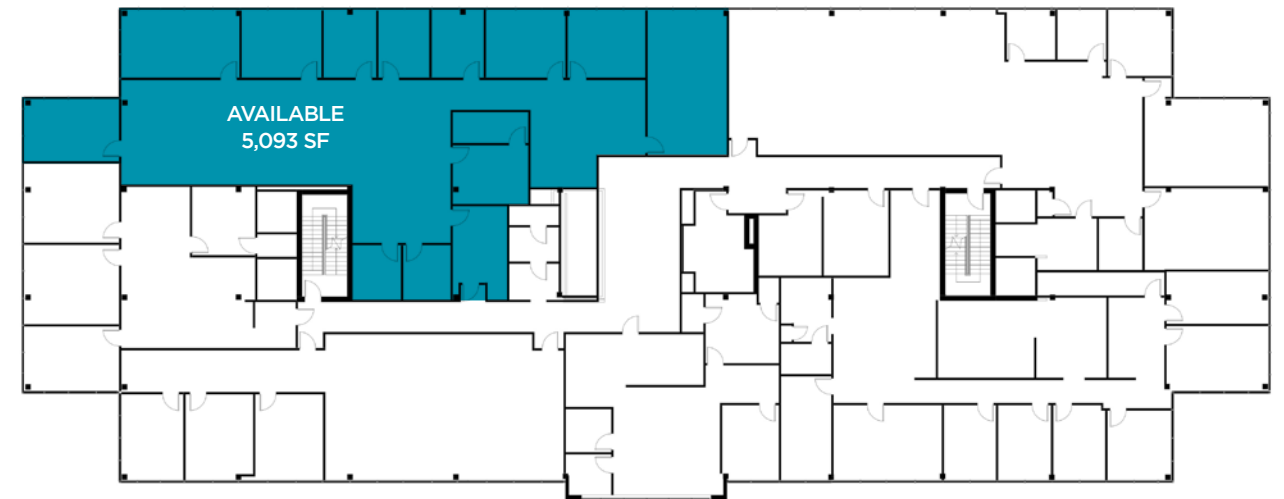
UPSCALE LOBBY



UPSCALE LOBBY



SECOND FLOOR

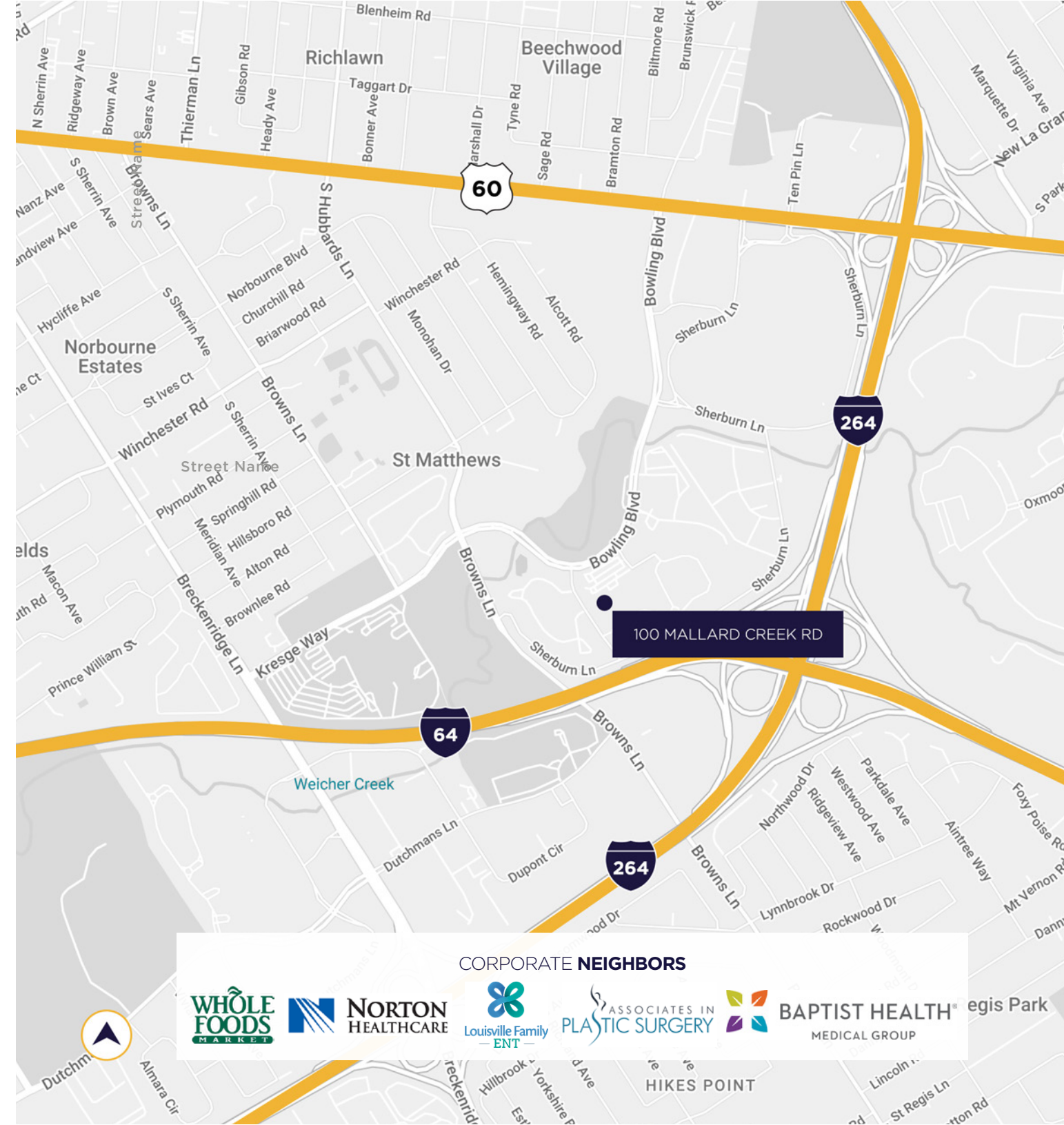
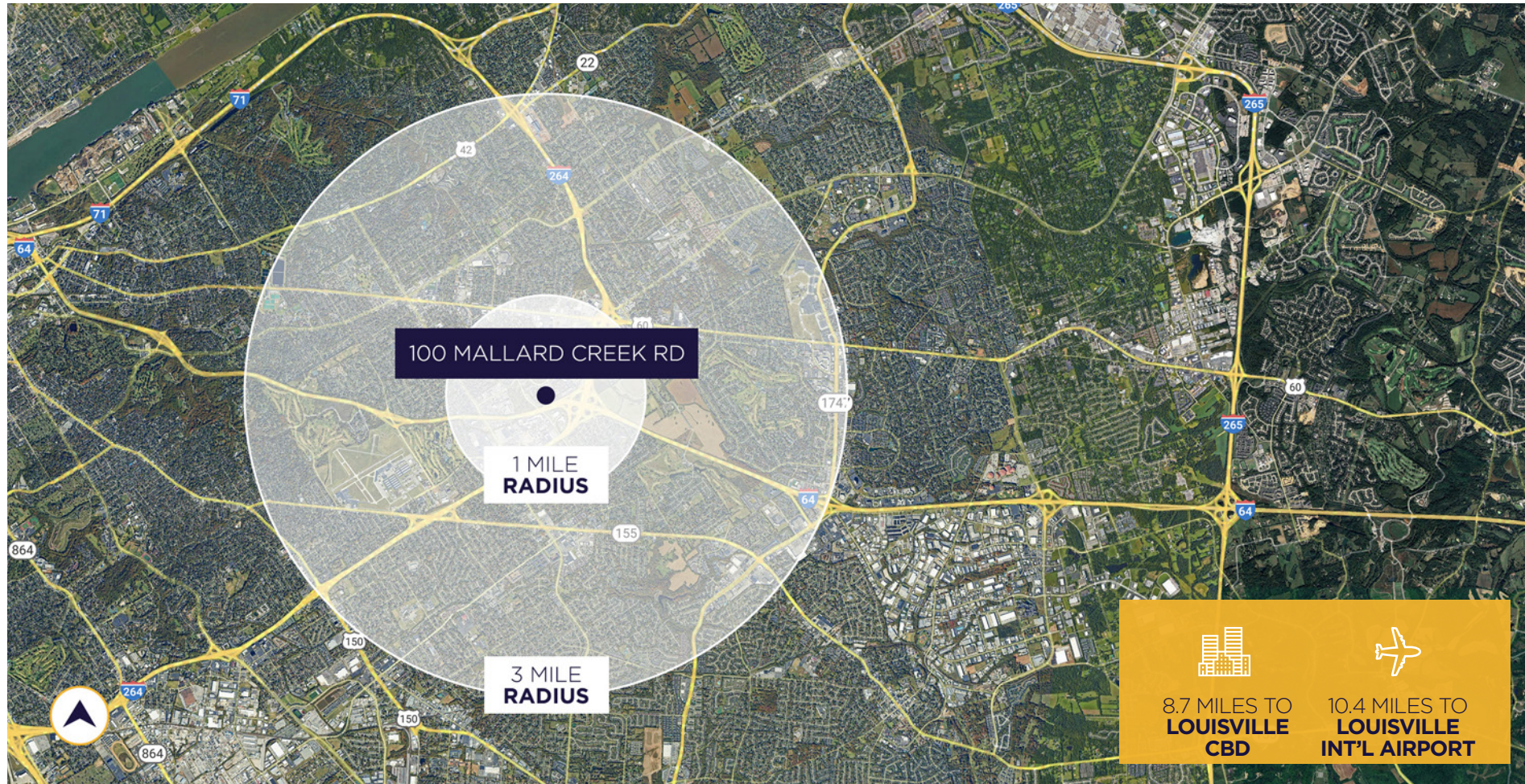
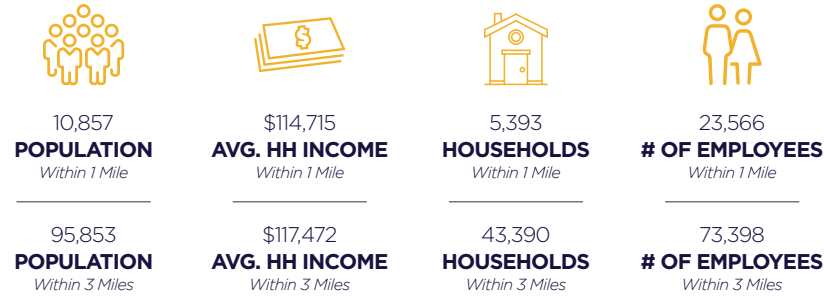


FOURTH FLOOR

FLOOR PLANS
2,734 - 5,093 SF

VERSATILE LOCATION

The building is centrally located in the heart of St. Matthews in close proximity to the interstate system, providing quick access to points across the city. Nearby hospital and diagnostic services, as well as restaurant and retail amenities, make this a great location for any number of office users.



0.6 MILES
TO MALL ST. MATTHEWS

0.8 MILES
TO BAPTIST HOSPITAL EAST

1.2 MILES
TO NORTON WOMEN'S AND CHILDREN'S HOSPITAL

1.5 MILES
TO UOFL HEALTH - MEDICAL CENTER EAST

1.8 MILES
TO I-264

2.5 MILES
TO I-64

CONTACT INFORMATION

BRENT BOLAND, CCIM

bboland@commercialkentucky.com
502 384 4494 ext. 134

BRENT DOLEN, SIOR, CCIM

bdolen@commercialkentucky.com
502 589 5150 ext. 262



©2024 Cushman & Wakefield. All rights reserved. The information contained in this communication is strictly confidential. This information has been obtained from sources believed to be reliable but has not been verified. NO WARRANTY OR REPRESENTATION, EXPRESS OR IMPLIED, IS MADE AS TO THE CONDITION OF THE PROPERTY (OR PROPERTIES) REFERENCED HEREIN OR AS TO THE ACCURACY OR COMPLETENESS OF THE INFORMATION CONTAINED HEREIN, AND SAME IS SUBMITTED SUBJECT TO ERRORS, OMISSIONS, CHANGE OF PRICE, RENTAL OR OTHER CONDITIONS, WITHDRAWAL WITHOUT NOTICE, AND TO ANY SPECIAL LISTING CONDITIONS IMPOSED BY THE PROPERTY OWNER(S). ANY PROJECTIONS, OPINIONS OR ESTIMATES ARE SUBJECT TO UNCERTAINTY AND DO NOT SIGNIFY CURRENT OR FUTURE PROPERTY PERFORMANCE.

Independently Owned & Operated / A Member of the Cushman & Wakefield Alliance