



FOR LEASE

369 Blodgett Street
Cotati, California

INDUSTRIAL/OFFICE

**UP TO ±23,000 SQUARE FEET
AVAILABLE DIVISIBLE**

PRICE
REDUCTION

For more information, contact:

Steven Leonard

Managing Director

+1 415 722 1080

steven.leonard@cushwake.com

LIC #0909604

Brian Foster

Executive Director

+1 415 297 6817

brian.foster@cushwake.com

LIC #01393059





±23,000 SF Available | Leasing Price: \$1.18 NNN

Property Highlights

- ± 3,000 SF Office, ± 20,000 SF Warehouse
- Metal and steel construction
- ±16' to ±25' clear height
- Great location near Lowe's and Graton Casino in a well established business park
- Easy freeway access to Highway 101 via Highway 116 (Gravenstein Highway)
- 6 grade level roll up truck doors

For more information, contact:

Steven Leonard

Managing Director

+1 415 722 1080

steven.leonard@cushwake.com

LIC #0909604

Brian Foster

Executive Director

+1 415 297 6817

brian.foster@cushwake.com

LIC #01393059

369 Blodgett Street

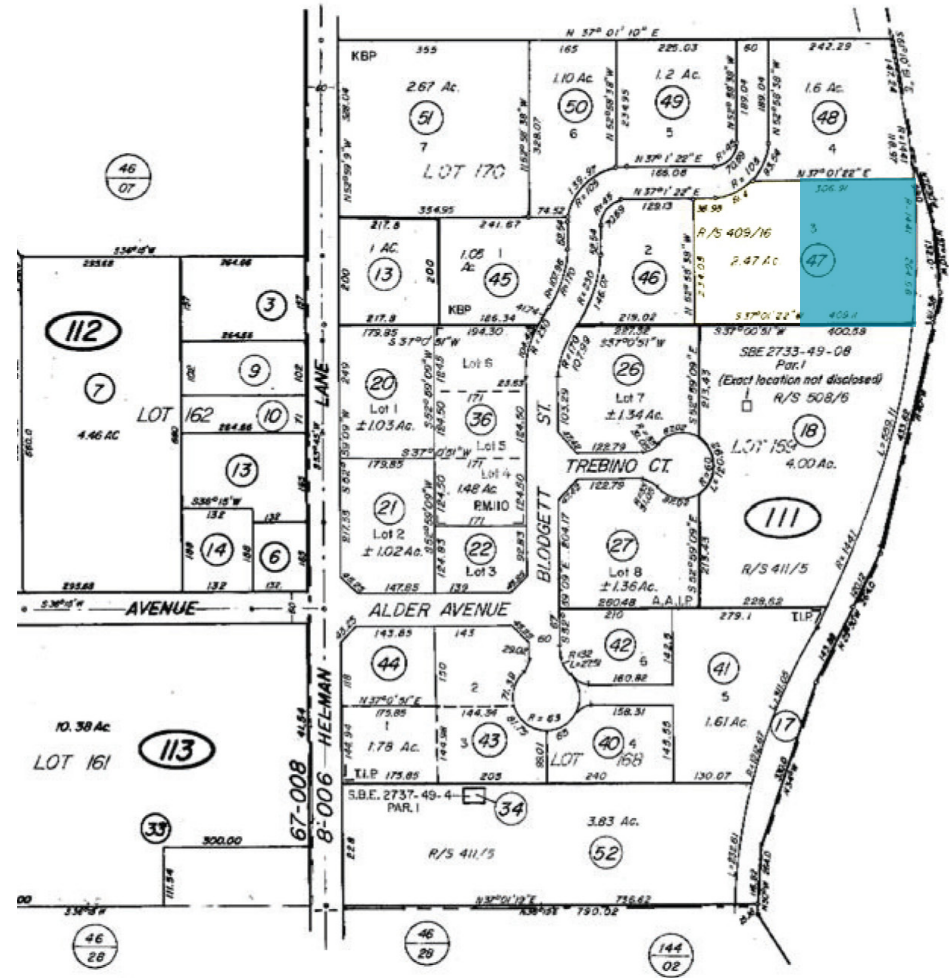
Cotati, California

± 23,000 SF Available

Leasing Price: \$1.18 PSF NNN

± 23,000 SF metal industrial space available, similar to buildings in the surrounding business park, The property is located in the Kandy Business Park near Highway 101.

Property Address:	369 Blodgett Street, Cotati, CA 94931
Asking Rent:	\$1.18 PSF NNN
Property Type:	Industrial
Zoning:	CI- Commercial/Industrial
Available:	±23,000 SF (± 20,000 SF warehouse, ±3,000 office)
Power:	1200 Amp / 480 Volt / 3 Phase
Fire Suppression:	Fully sprinklered



FOR LEASE

369 Blodgett Street
Cotati, California

± 23,000 SF Available

Floor Plan | Site Plan



6 Grade Level Doors

For more information, contact:

Steven Leonard

Managing Director

+1 415 722 1080

steven.leonard@cushwake.com

LIC #0909604

Brian Foster

Executive Director

+1 415 297 6817

brian.foster@cushwake.com

LIC #01393059



FOR LEASE

369 Blodgett Street
Cotati, California

