

MOUNTAIN PACIFIC BUSINESS PARK

LOVELAND, COLORADO 80538



2,400 SF AVAILABLE

LEASE RATE: \$16.00-\$18.00/SF NNN | NNN: \$5.51/SF (ESTIMATED)

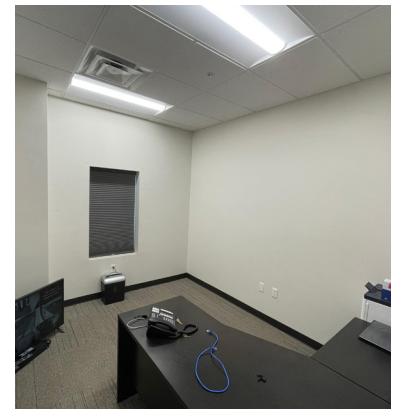
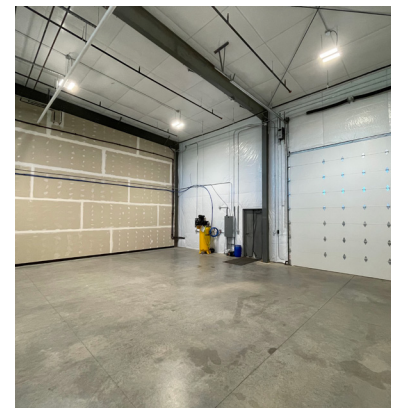
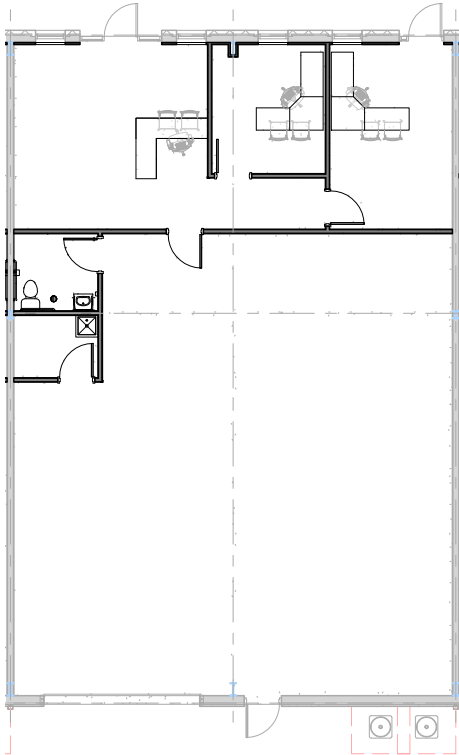
Mountain Pacific Business Park is a centrally located business park on Highway 287 with great access to both Fort Collins and Loveland across from a Walmart Supercenter. Flexible design allows for multiple uses including but not limited to office, warehouse, showroom, etc. Larger users can be accommodated at Mountain Pacific Business Park with a build-to-suit opportunity. 153 Total parking spaces are available.



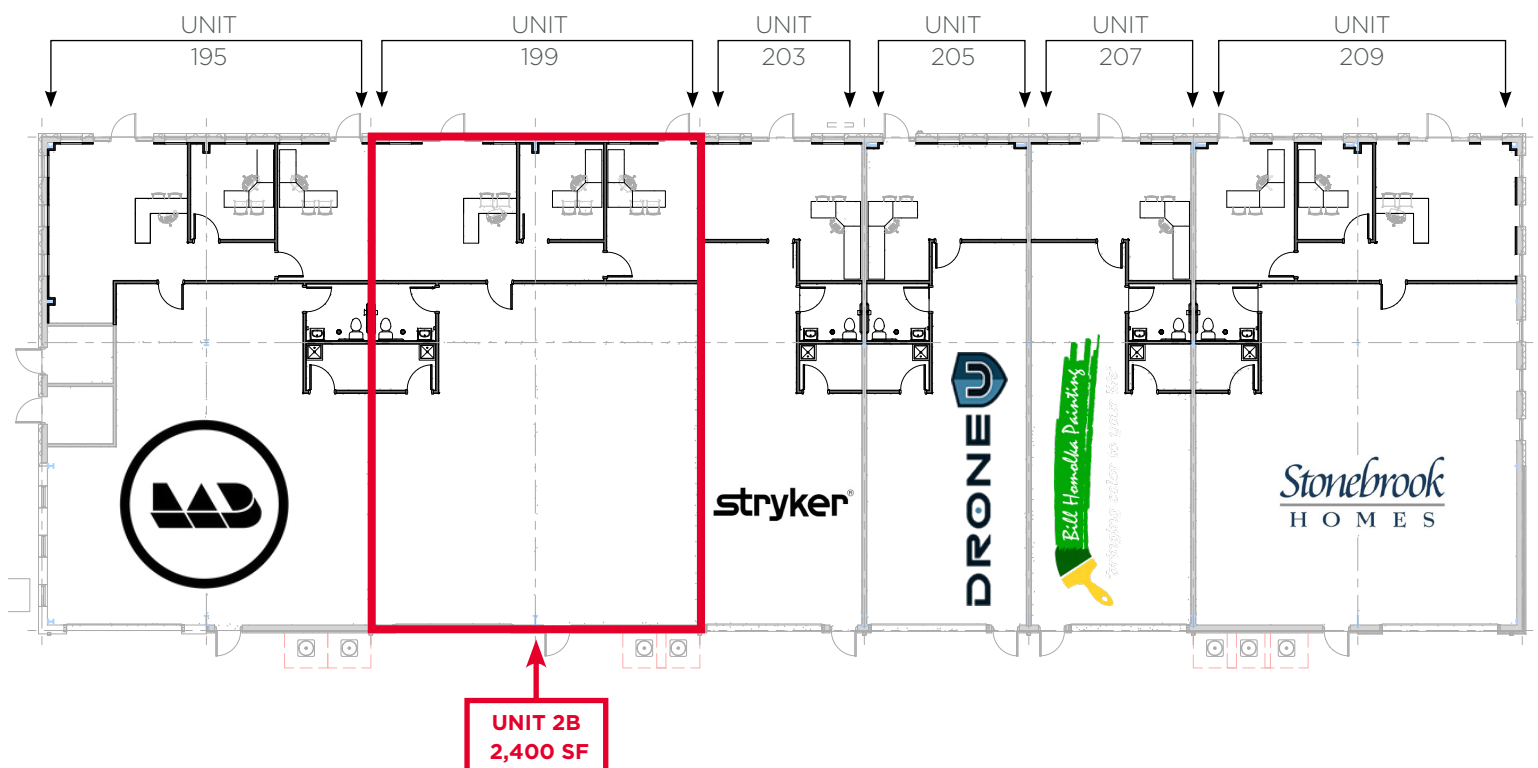
MOUNTAIN PACIFIC BUSINESS PARK

LOVELAND, COLORADO 80538

FLOOR PLAN: UNIT 199 | 2,400 SF

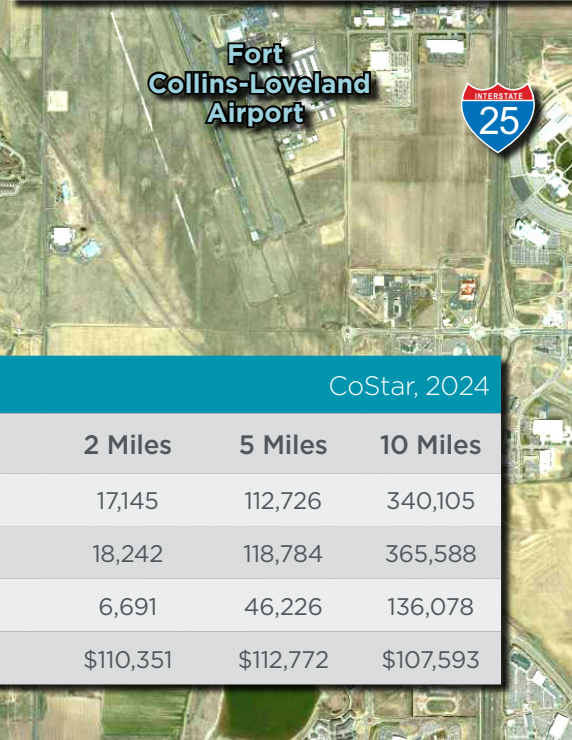
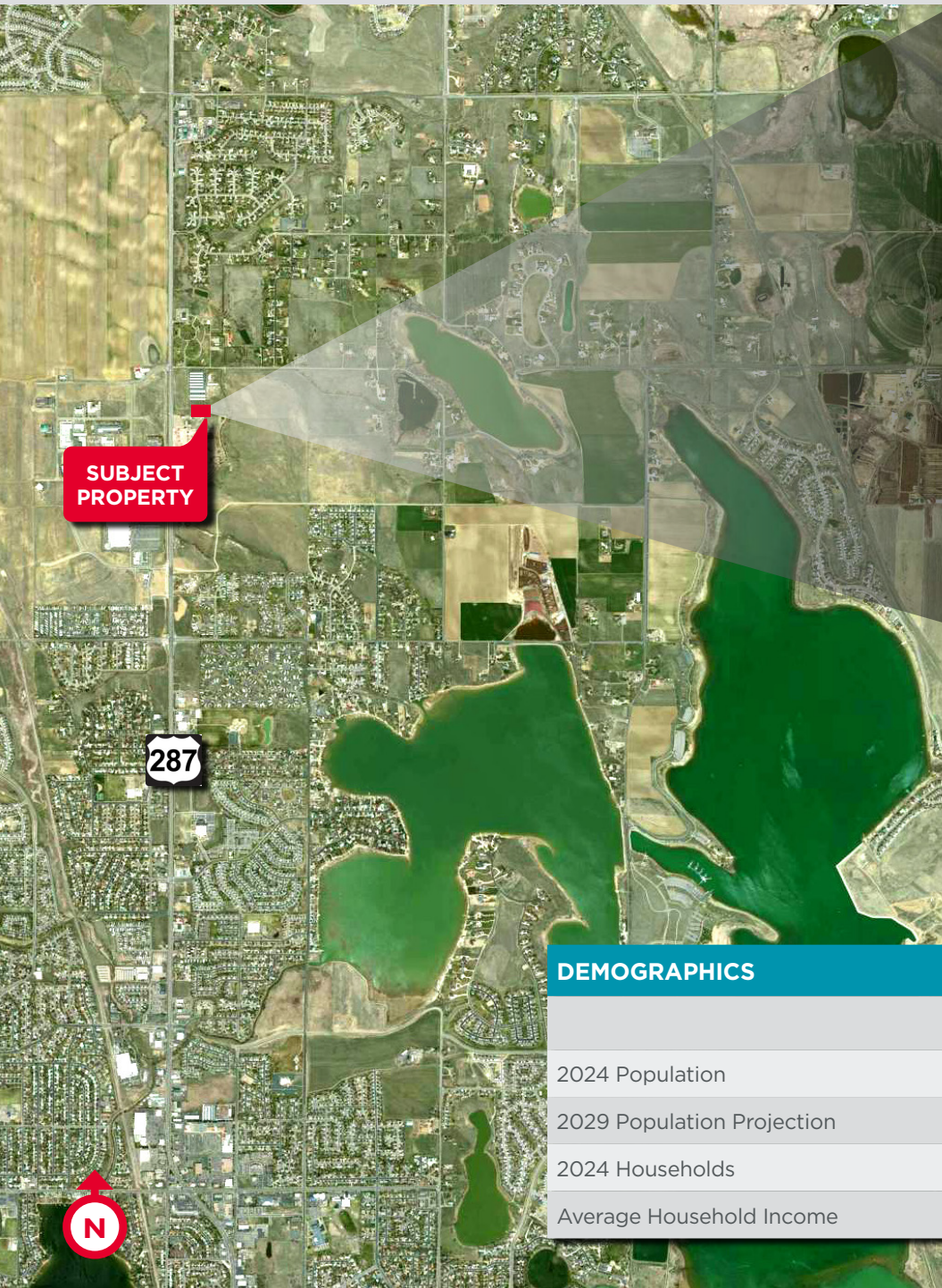


EXISTING BUILDING B: | FLOOR PLAN



MOUNTAIN PACIFIC BUSINESS PARK

LOVELAND, COLORADO 80538



DEMOGRAPHICS

CoStar, 2024

	2 Miles	5 Miles	10 Miles
2024 Population	17,145	112,726	340,105
2029 Population Projection	18,242	118,784	365,588
2024 Households	6,691	46,226	136,078
Average Household Income	\$110,351	\$112,772	\$107,593

For more information, please contact:

AKI PALMER

Executive Managing Director
+1 970 267 7727
aki.palmer@cushwake.com

COLE VANMEVEREN

Senior Director
+1 303 219 3268
cole.vanmeveren@cushwake.com

772 Whalers Way, Suite 200
Fort Collins, Colorado 80525

T +1 970 776 3900
F +1 970 267 7419

cushmanwakefield.com