

FOR LEASE

5200 WILLSON ROAD  
EDINA, MN

EDINA  
EXECUTIVE  
PLAZA



 CUSHMAN &  
WAKEFIELD

## PROPERTY HIGHLIGHTS

- Excellent Edina location just southeast of Highway 100 and West 50th Street
- Amenity package includes conference room and vending room
- Abundant surface parking
- Easy access to the 50th and France Avenue shopping area
- Adjacent to the Edina Country Club
- Built in 1981, recently renovated common areas
- Class B, 4-stories
- Parking ratio - 5/1,000

### BUILDING INFORMATION

BUILDING SIZE: 48,299 SF

SPACE AVAILABLE:

- Suite 209 ..... 3,348 SF
- Suite 280 .... 1,821 SF
- Suite 300 .... 2,307 SF
- Suite 325 ..... 2,476 SF

PARKING: Surface parking

LEASE RATE: \$14.00 PSF

2026 ESTIMATED TAX & OPER. EXP.

- \$10.78 PSF OPEX
- \$3.65 PSF Taxes
- \$14.43 PSF Total**





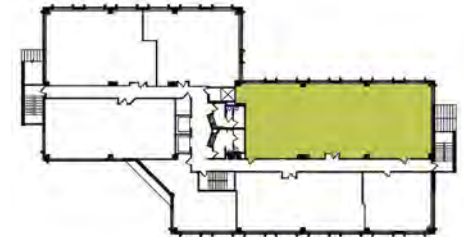
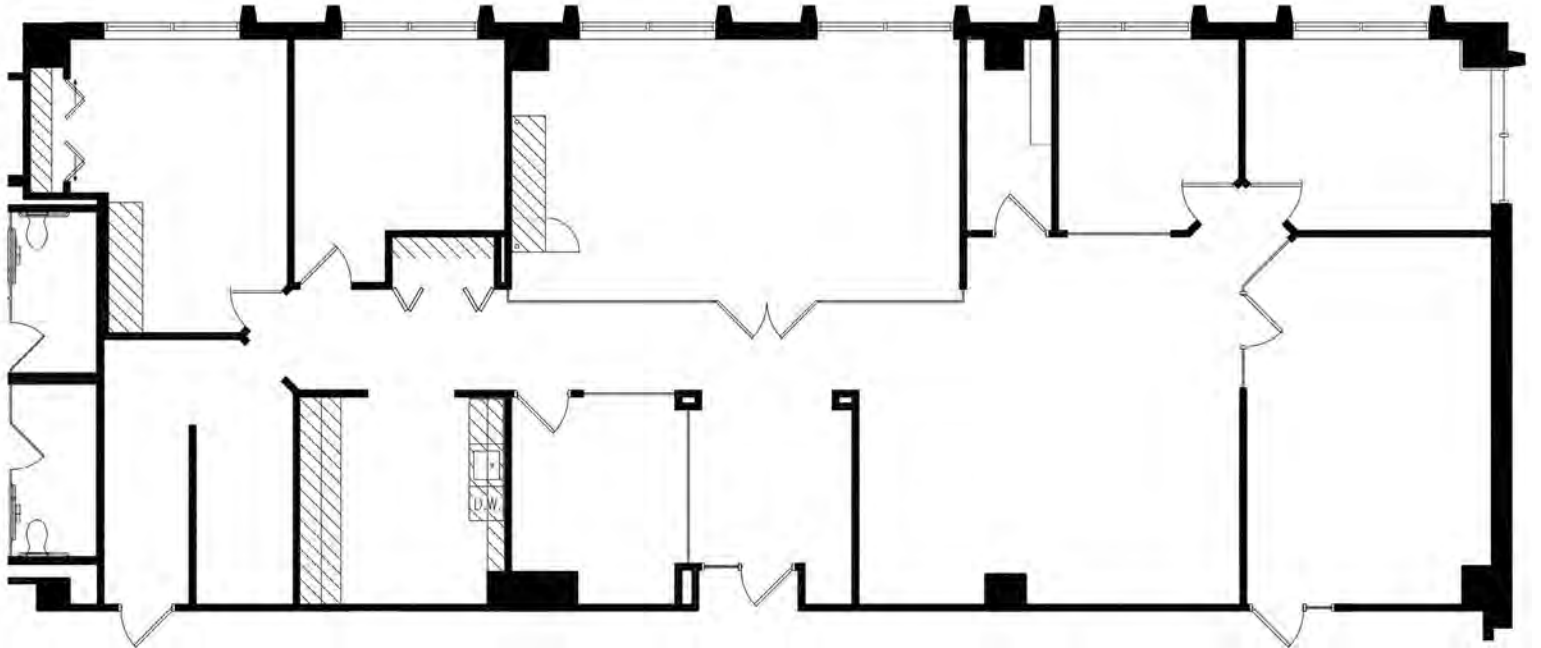
## AVAILABILITIES

Suite Number	Square Footage	Virtual Tour
209	3,348	<a href="#">Virtual Tour</a>
280	1,821	
300	2,307	<a href="#">Virtual Tour</a>
325	2,476	<a href="#">Virtual Tour</a>



**FLOOR  
PLAN**

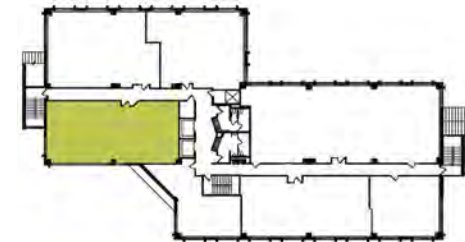
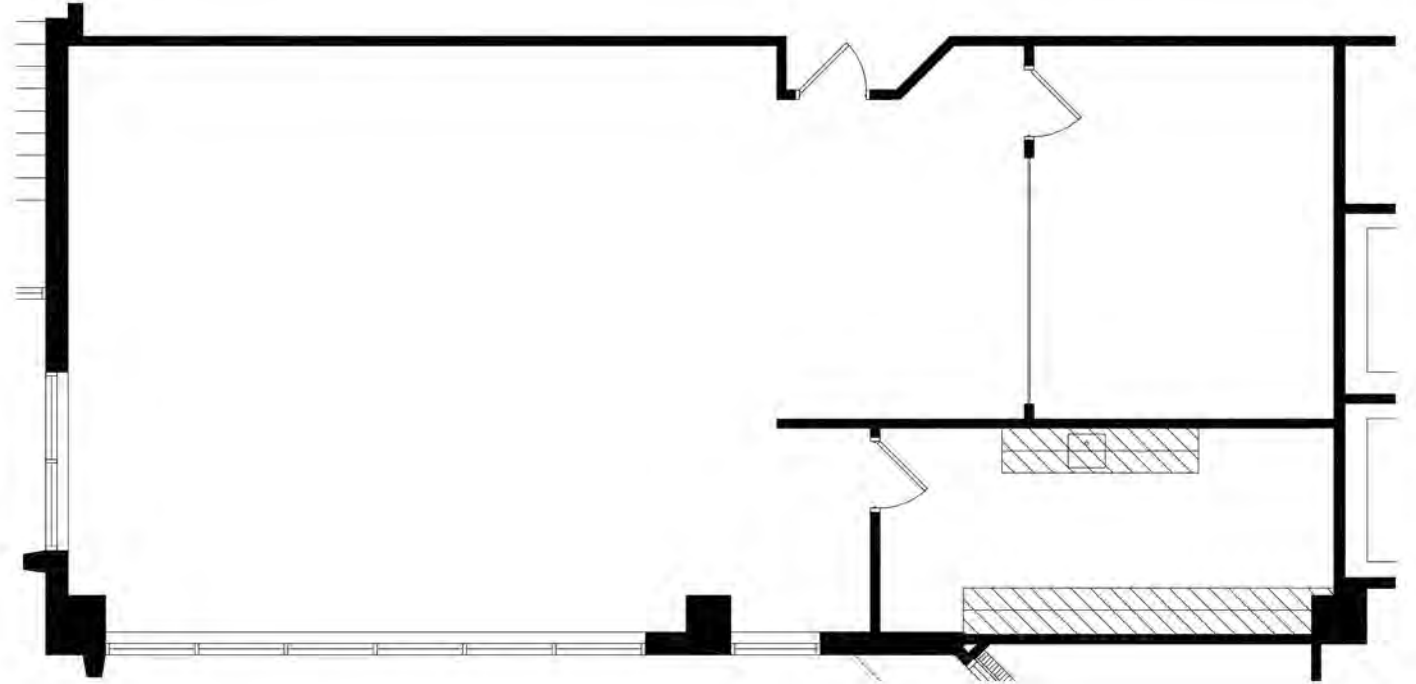
SUITE 209 - 3,348 SF  
[VIRTUAL TOUR](#)



Key Plan - 2nd Floor

**FLOOR  
PLAN**

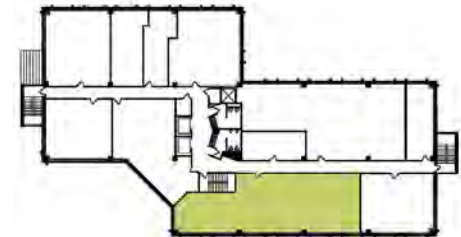
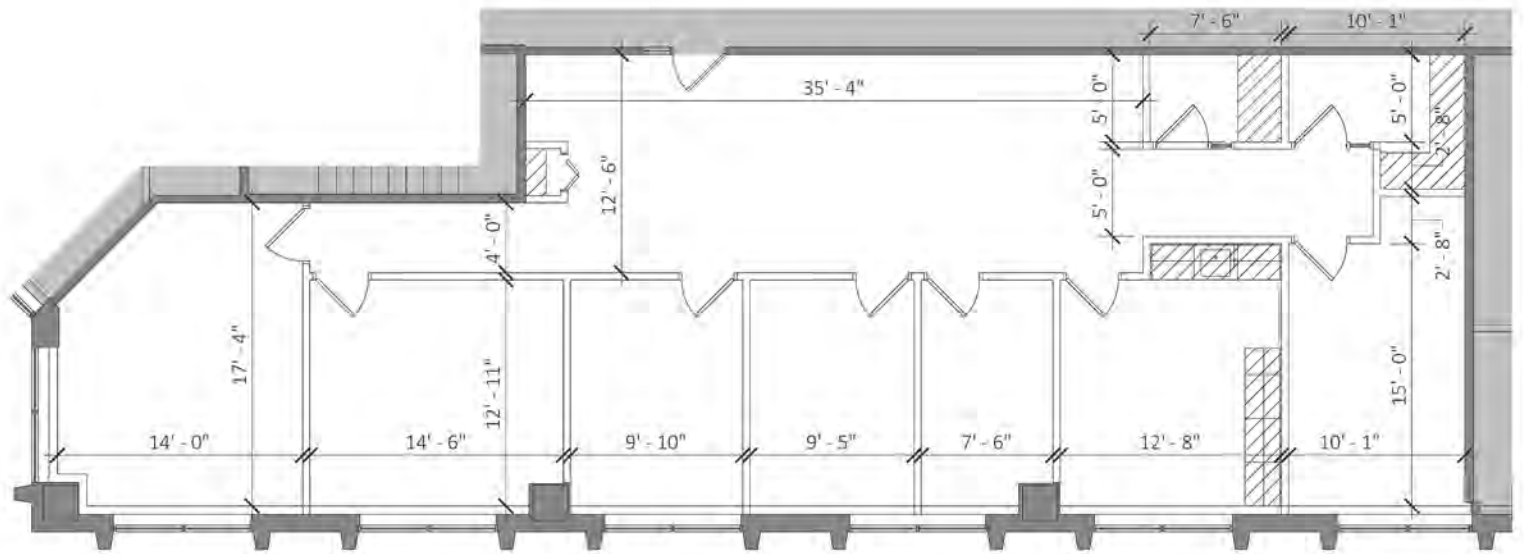
SUITE 280 - 1,821 SF



Key Plan - 2nd Floor

**FLOOR  
PLAN**

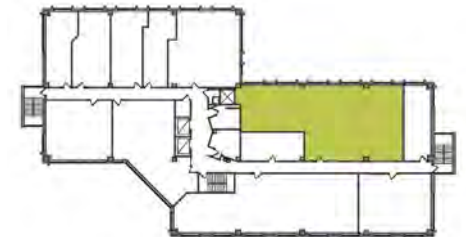
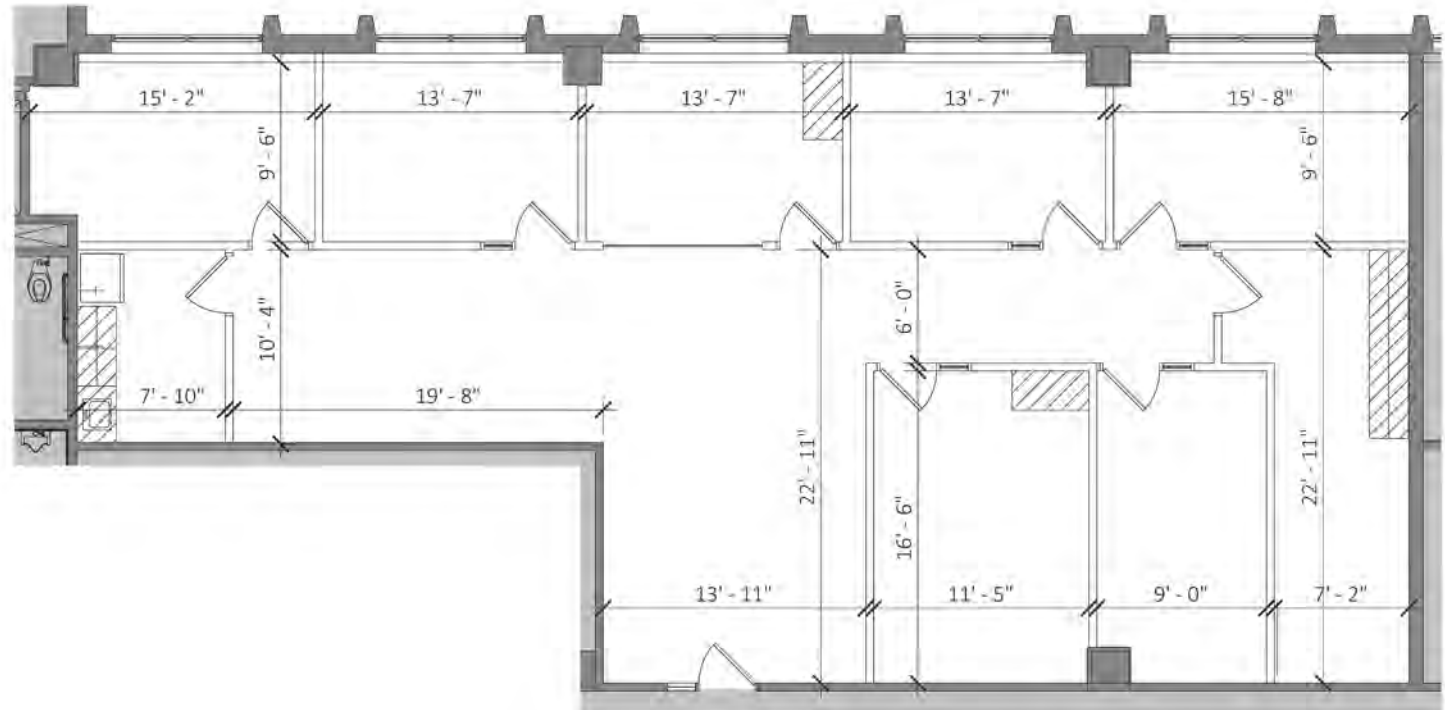
SUITE 300 - 2,307 SF  
[VIRTUAL TOUR](#)



Key Plan - 3rd Floor

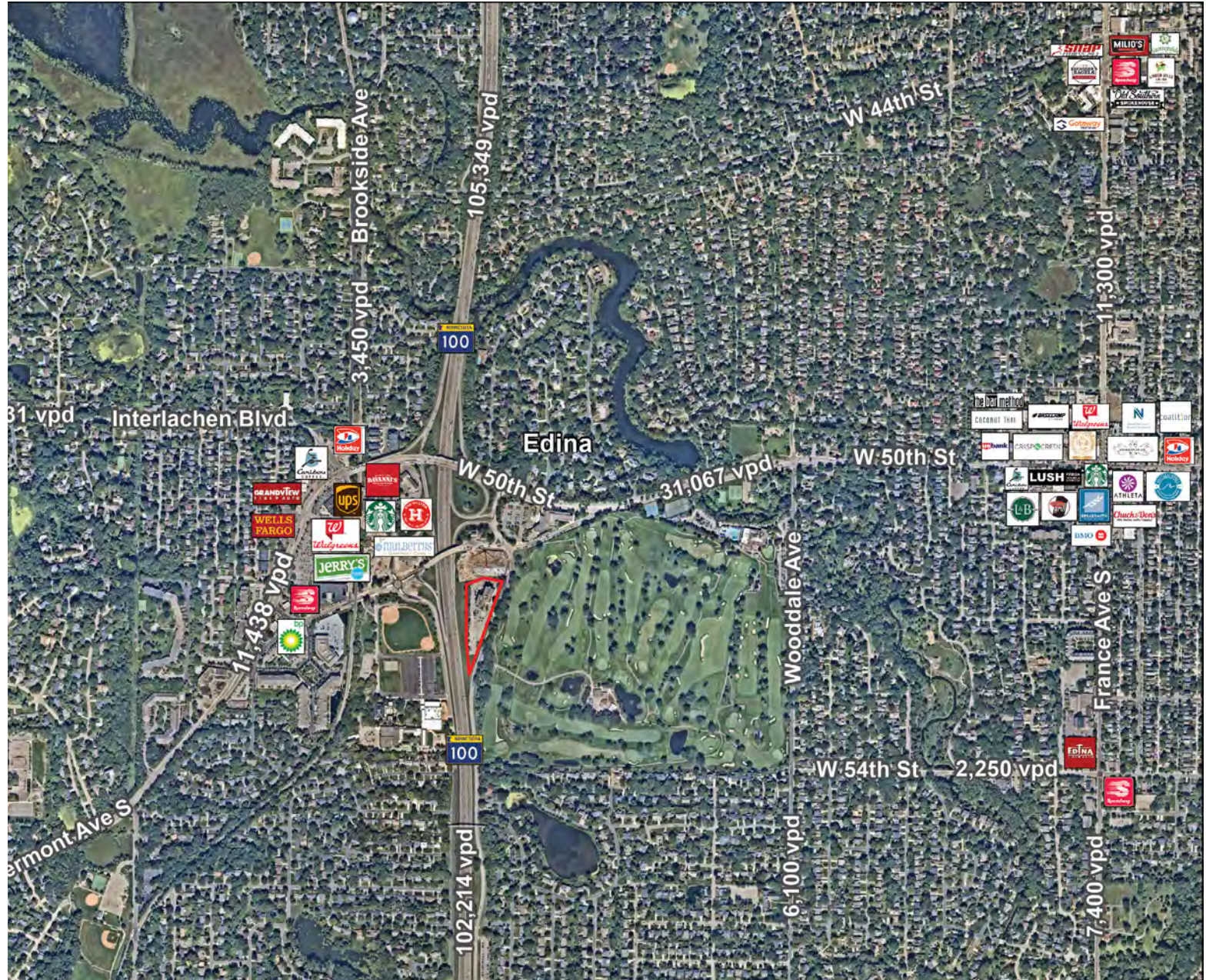
**FLOOR  
PLAN**

SUITE 325 - 2,476 SF  
[VIRTUAL TOUR](#)

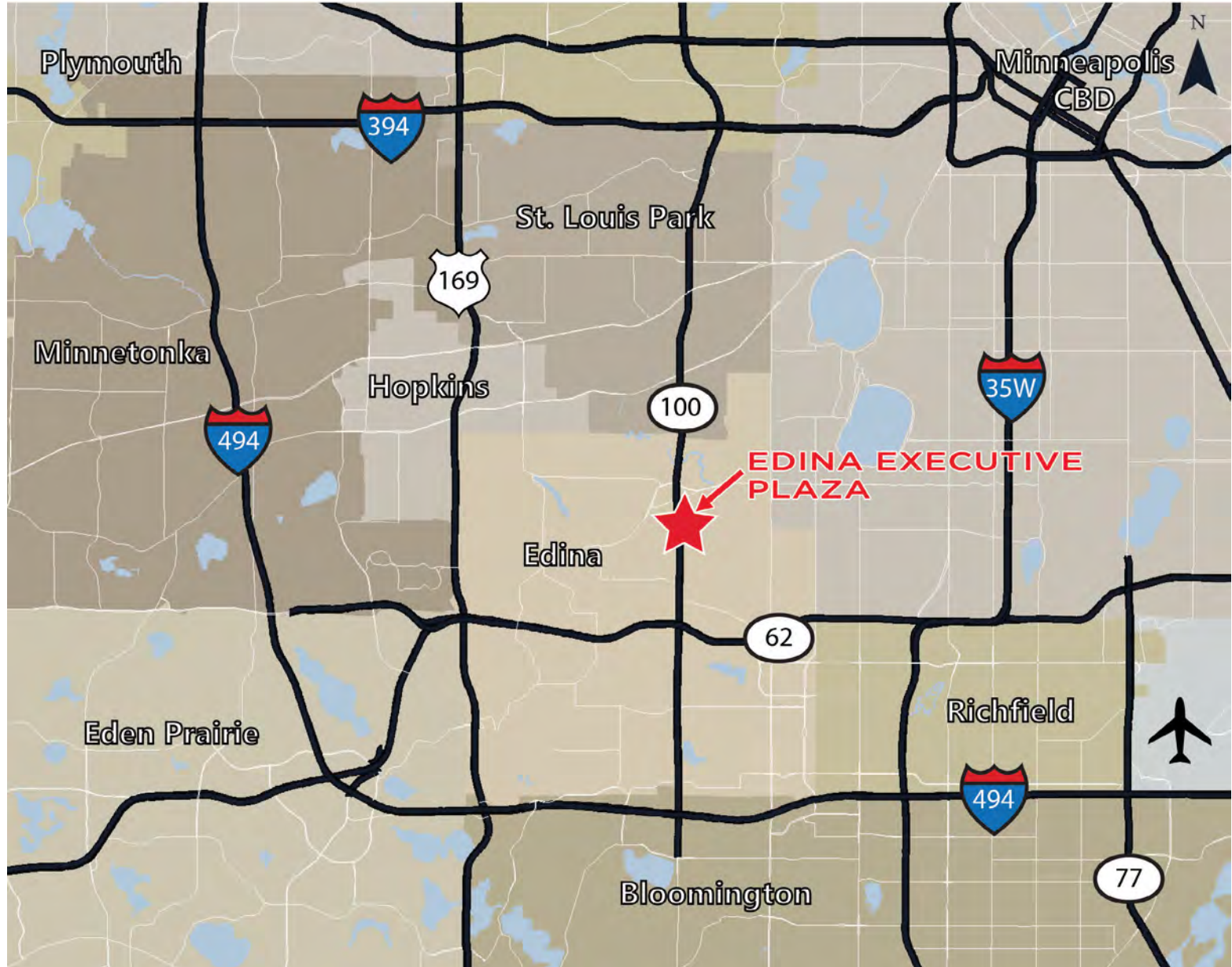


Key Plan - 3rd Floor

PROPERTY  
AERIAL



PROPERTY  
MAP



PROPERTY  
IMAGES



**FOR MORE INFORMATION, CONTACT:**

**RYAN HAMPSON**  
Senior Associate  
+1 952 465 3309  
[ryan.hampson@cushwake.com](mailto:ryan.hampson@cushwake.com)

**AARON BARNARD, SIOR, CCIM**  
Senior Director  
+1 952 465 3372  
[aaron.barnard@cushwake.com](mailto:aaron.barnard@cushwake.com)



3500 American Blvd. W, Suite 200  
Minneapolis, MN 55431

[cushmanwakefield.com](http://cushmanwakefield.com)

©2024 Cushman & Wakefield. All rights reserved. The information contained in this communication is strictly confidential. This information has been obtained from sources believed to be reliable but has not been verified. NO WARRANTY OR REPRESENTATION, EXPRESS OR IMPLIED, IS MADE AS TO THE CONDITION OF THE PROPERTY (OR PROPERTIES) REFERENCED HEREIN OR AS TO THE ACCURACY OR COMPLETENESS OF THE INFORMATION CONTAINED HEREIN, AND SAME IS SUBMITTED SUBJECT TO ERRORS, OMISSIONS, CHANGE OF PRICE, RENTAL OR OTHER CONDITIONS, WITHDRAWAL WITHOUT NOTICE, AND TO ANY SPECIAL LISTING CONDITIONS IMPOSED BY THE PROPERTY OWNER(S). ANY PROJECTIONS, OPINIONS OR ESTIMATES ARE SUBJECT TO UNCERTAINTY AND DO NOT SIGNIFY CURRENT OR FUTURE PROPERTY PERFORMANCE.