

**FOR LEASE**

OFFICE SPACE AVAILABLE IN DOWNTOWN OGDEN

Property Highlights

- Available Spaces
 - » **Suite 100:** 278 - 482 SF Executive Spaces
 - » **Suite 207:** 1,201 SF
Space has large open area, 2 offices, and a private restroom
 - » **Suite 204:** 2,271 SF
Space has 3 large open areas and 4 offices
 - » **Suite B1-B3:** 551 SF - 3,025 SF
- Lease Rate: \$14.00 PSF/MG
- Excellent location in downtown Ogden within walking distance to many amenities and public transit
- Tenant pays their own in-suite janitorial services



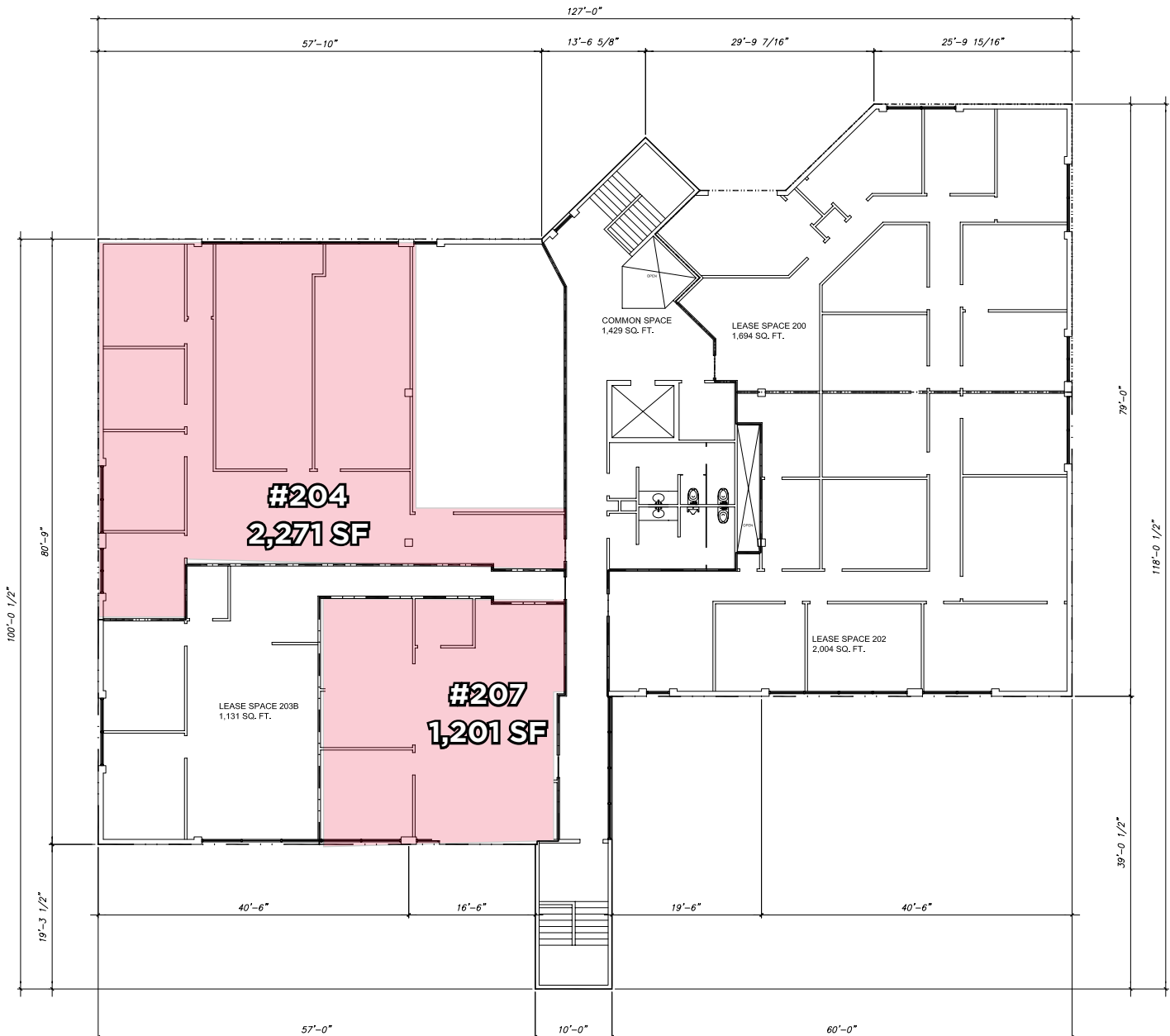
Julie Brown
Senior Associate
+1 801 644 4946
julie.brown@cushwake.com

April Hartzell
Associate
+1 801 814 4273
april.hartzell@cushwake.com

cushmanwakefield.com



2nd Floor Floor Plan





Basement Floor Plan

