

us bank tower
CINCINNATI



THE BUILDING

U.S. Bank Tower is a 27 story 365 foot tall skyscraper located at 5th and Walnut Streets in downtown Cincinnati. The building's tenant population is comprised of a variety of businesses and organizations such as law firms, financial and investment organizations, and real estate companies. The building connects to The Westin Hotel, a AAA four-diamond hotel that features 456 guest rooms.

NEW OWNERSHIP!

MAP Property Holdings is a high net worth private equity investment firm specializing in value oriented commercial real estate investments across the continental US.

MAP's current investment portfolio totals over 3.8 million square feet in nine states.

PROPERTY HIGHLIGHTS



MANY ON-SITE AND
NEARBY RESTAURANTS



WALK TO YOUR DESTINATION
OR TAKE THE STREET-CAR



ON-SITE PARKING
AVAILABLE



SHARED
CONFERENCE CENTER



CENTRALIZED LOCATION
IN THE HEART OF THE CBD



ENERGY STAR CERTIFIED AND
BOMA 360 ACCREDITATION



GENERAL BUILDING INFORMATION

TYPICAL FLOORPLATE	Floors 1-19 approximately 24,000 RSF, Floors 20-26 approximately 14,500 RSF
TYPICAL CEILING HEIGHT	8'-5" finished, 12' deck to deck
ELEVATOR SERVICE	Two banks of (6) elevators (1-11, 12-26)
SECURITY	24/7/365 Guard Service, Closed Circuit TV System
TELECOM	Providers with fiber in building; Cincinnati Bell, Time Warner, Cogent Communications.
FLOOR LOAD	Ground Floor & 2nd Floor: 100# sq. ft. / Office Floors: 70# sq. ft.
HVAC	<p>NEW cooling towers installed in 2018 and new Trane Chiller installed in 2019 to ensure the system exceeds occupancy loads and increase reliability</p> <p>Central plant delivers chilled water to the AHU's on the 27th floor and 12th floor and SL</p> <p>Heating provided via hot water boiler system. Perimeter heat provided via convection style fin tube registers along exterior walls</p>
ELECTRIC	<p>277/460v, three phase</p> <p>120/208v power for receptacles/typical use</p>
DOCK	One (1) dock accomodates maximum truck size of 12ft in height by 24ft in length (cab & trailer). The dock can NOT accommodate semi-trucks or straight trucks over 24' in length
GARAGE/PARKING	<p>Fountain Square South Garage (Located in US Bank Tower via elevator access from lobby): 408 Parking Spaces</p> <p>Fountain Square North Garage: 604 Parking Spaces</p> <p>Mabley Garage: 775 Parking Spaces</p>
CLEANING	Nightly standard cleaning M-F excluding holidays + full time day cleaning staff
MAINTENANCE/SERVICES	<p>Dedicated on-site property management team</p> <p>Service requests managed via Angus software</p> <p>Full time Maintenance Personnel staff</p> <p>Common areas and common systems maintenance included in operating expenses</p>
RENT	\$22.00/psf Full Service Gross



THE ULTIMATE LOCATION

Located along the Ohio River, Downtown Cincinnati is home to the city's largest corporations, several apartment complexes, dozens of restaurants, a plethora of bars and coffee shops, and professional sports stadiums.

Rich with culture and history, the downtown area acts as the economic hub of the city as well as the home for many festivals, marathons, and other public events.

Enjoy hundreds of events located just across the street at Fountain Square. A public square where concerts, festivals, tree lighting ceremony, ice rink, food trucks and other events take place throughout the year.

US Bank Tower is just a short walk to all your favorite entertainment venues that Cincinnati has to offer. Including Great American Ball Park, Paycor Stadium, The Banks, Fountain Square, and the new Icon Music Center. Take the Streetcar to Findley Market, Music Hall, Washington Park or the new FC Cincinnati Stadium located in Over-The-Rhine!



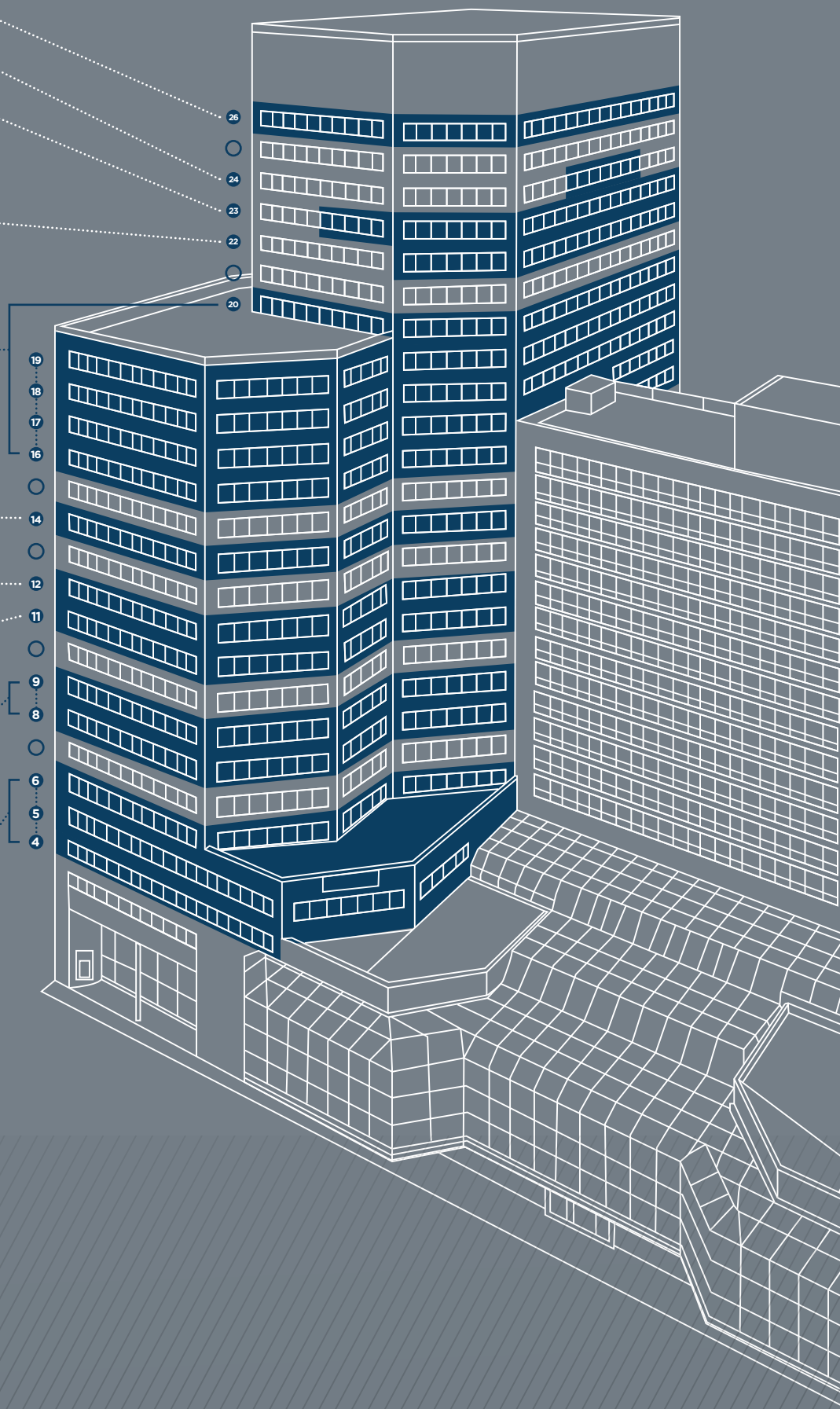
VIEWS FROM THE TOP

Enjoy spectacular views of downtown Cincinnati, Over-the-Rhine & Northern Kentucky from your office chair. Enjoy aerial views of Fountain Square and events such as music concerts, farmer's markets and ice skating. Admire the fireworks during Riverfest and cheer on the Red's during a homerun. You're in the heart of Cincinnati!



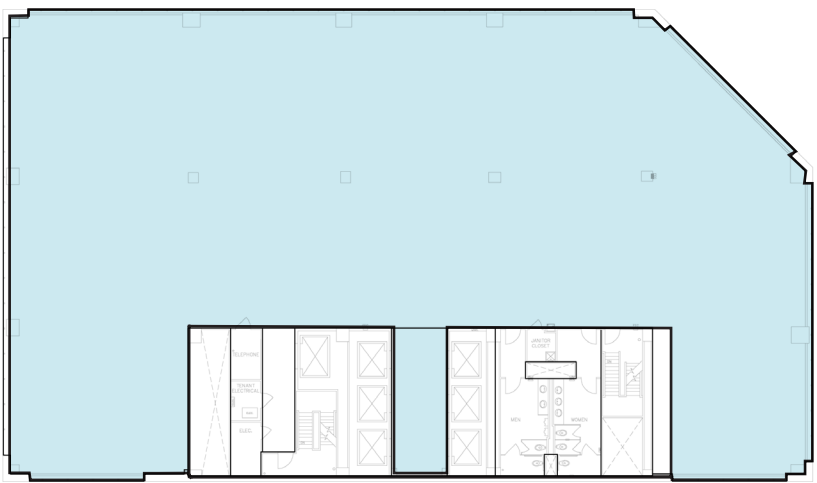
AVAILABILITIES

- Floor 26 - 14,010 RSF
- Floor 24 - 3,416 RSF
- Floor 23 - 9,951 RSF
 - Suite 2300: 8,609 RSF
 - Suite 2330: 1,342 RSF
- Floor 22 - 10,977 RSF
 - Suite 2200: 7,997 RSF
 - Suite 2230: 2,980 RSF
- Floor 20 - 13,888 RSF
- Floor 19 - 24,164 RSF
- Floor 18 - 24,172 RSF
- Floor 17 - 24,126 RSF
- Floor 16 - 24,126 RSF
 - Total Contiguous for floors 16-20: **110,476 RSF**
- Floor 14 - 23,815 RSF
- Floor 12 - 10,958 RSF
- Floor 11 - 24,999 RSF
 - Suite 1100: 3,535 RSF
 - Suite 1110: 10,498 RSF
 - Suite 1120: 3,228 RSF
 - Suite 1130: 1,195 RSF
 - Suite 1140: 5,150 RSF
- Floor 9 - 24,957 RSF
- Floor 8 - 24,999 RSF
 - Total Contiguous for floors 8-9: **49,956 RSF**
- Floor 6 - 24,999 RSF
- Floor 5 - 27,500 RSF
- Floor 4 - 27,500 RSF
 - Total Contiguous for floors 4-6: **79,999 RSF**



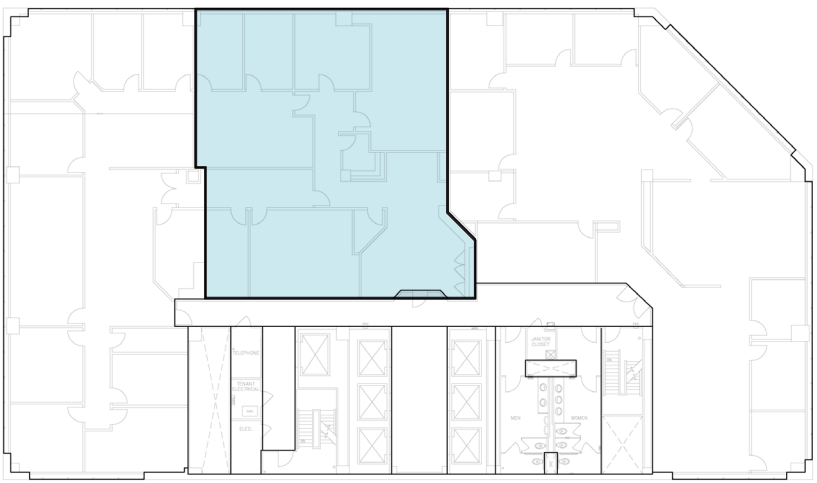
FLOOR 26

- FULL FLOOR AVAILABLE -
14,010 TOTAL RSF



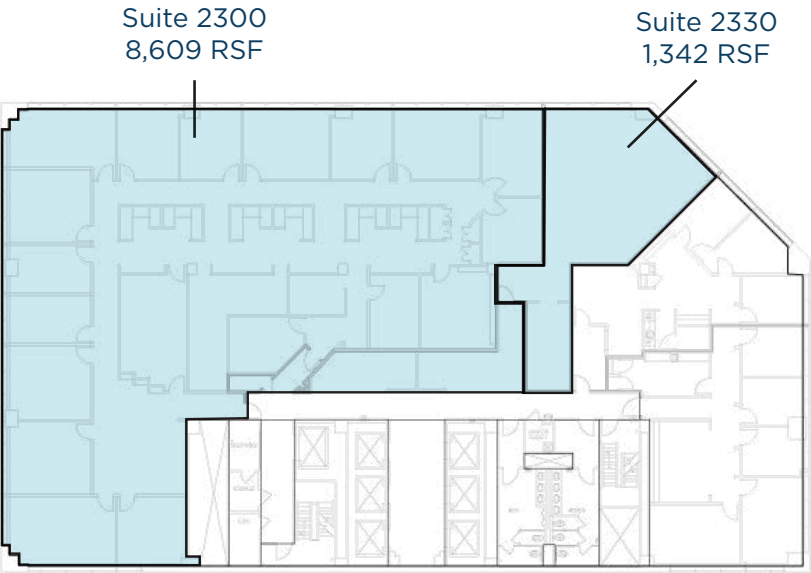
FLOOR 24 - SUITE 2420

3,416 RSF AVAILABLE



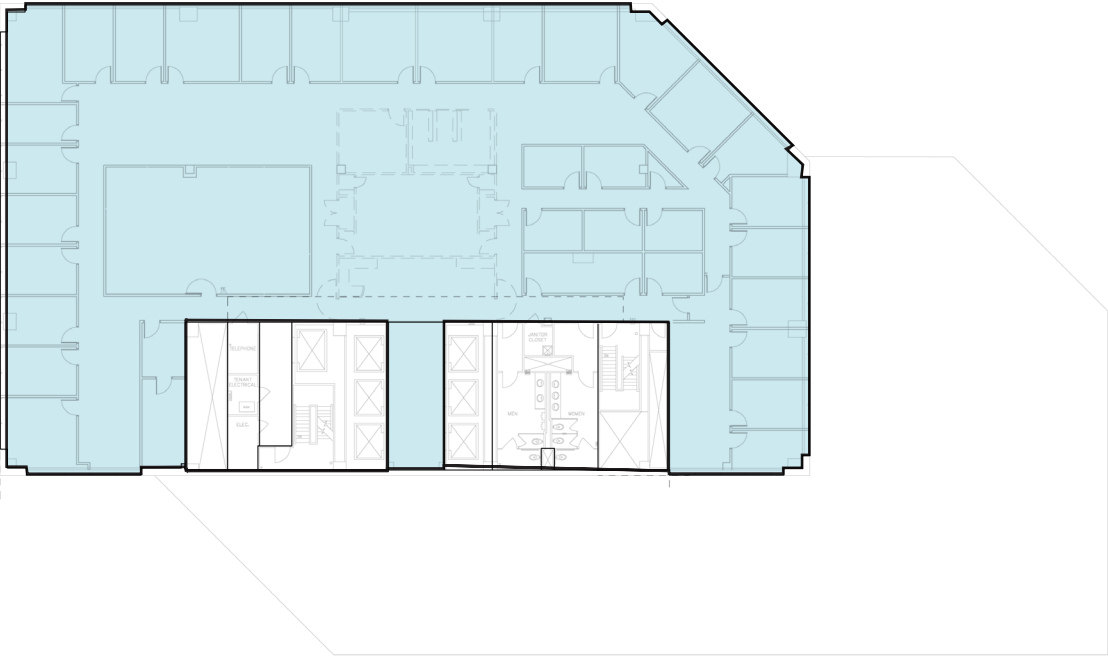
FLOOR 23

TOTAL CONTIGUOUS SPACE: 9,951 RSF



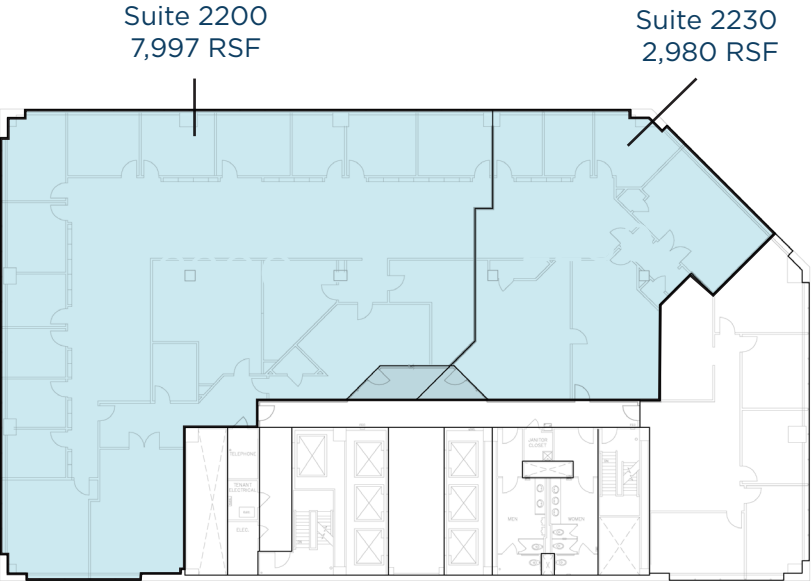
FLOOR 20

- FULL FLOOR AVAILABLE -
13,888 TOTAL RSF



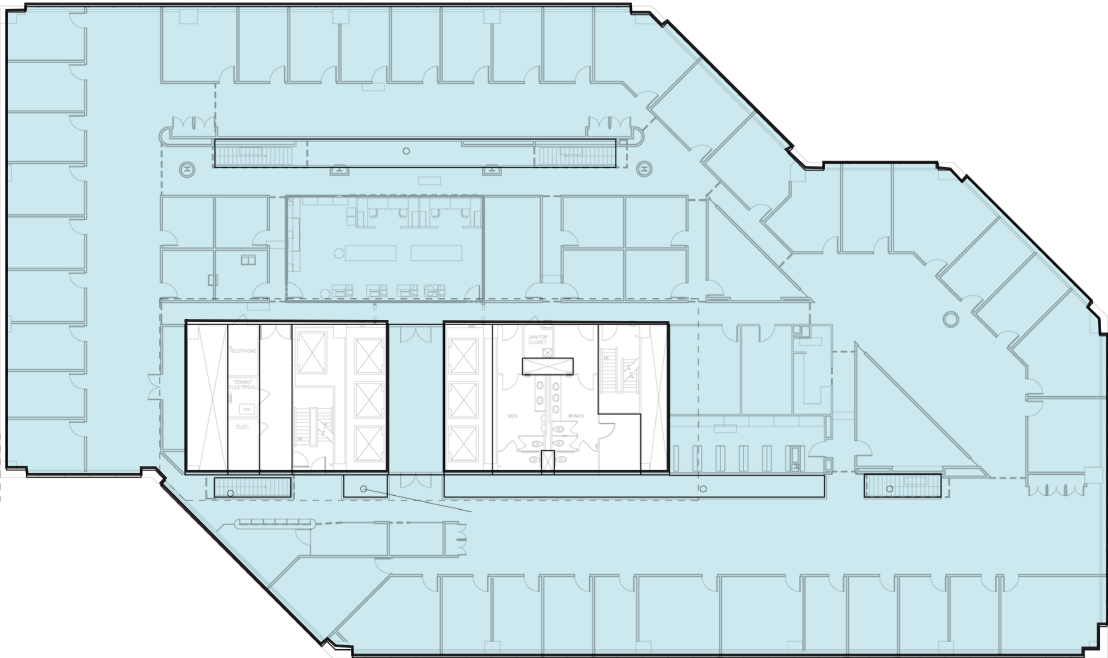
FLOOR 22

TOTAL CONTIGUOUS SPACE: 10,977 RSF



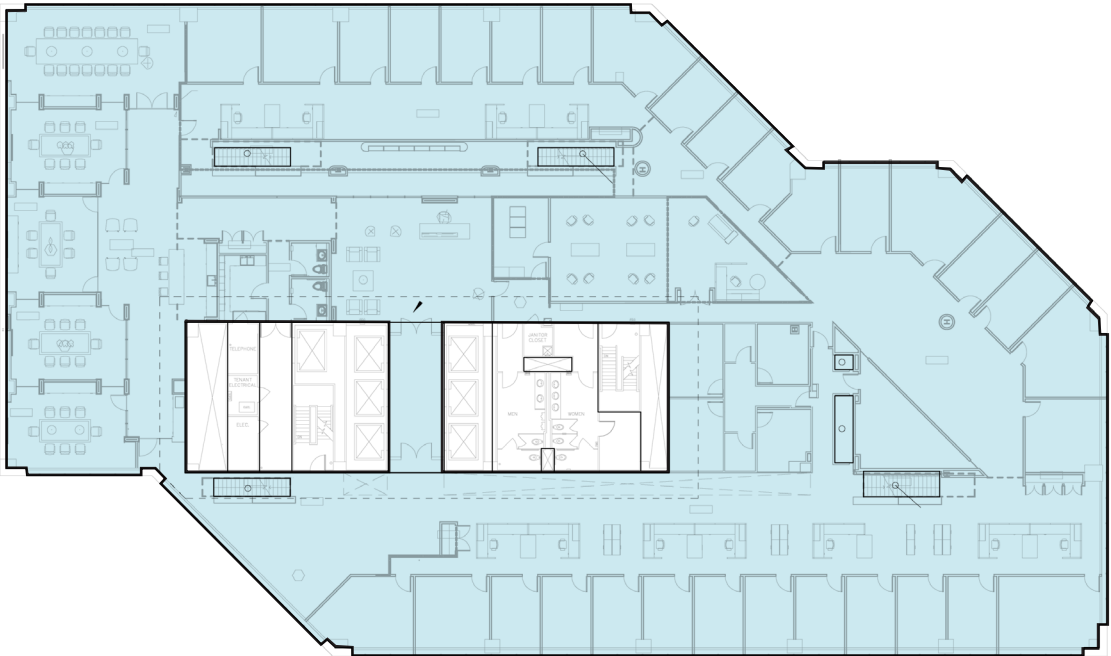
FLOOR 19

- FULL FLOOR AVAILABLE -
24,164 TOTAL RSF



FLOOR 18

- FULL FLOOR AVAILABLE -
24,172 TOTAL RSF



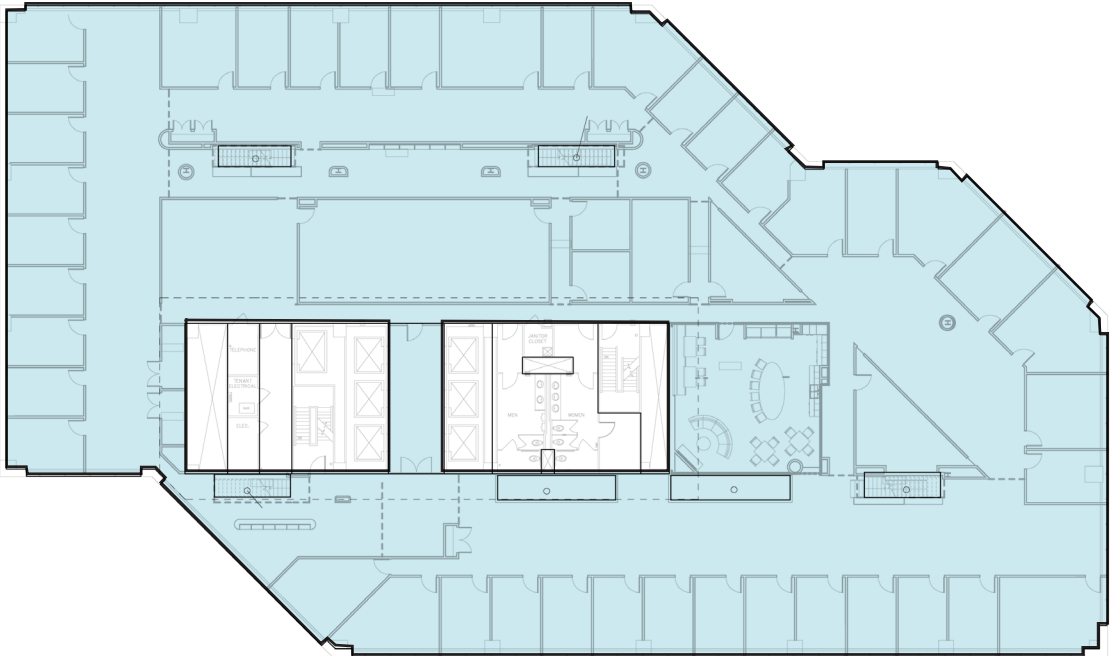
FLOOR 16

- FULL FLOOR AVAILABLE -
24,126 TOTAL RSF



FLOOR 17

- FULL FLOOR AVAILABLE -
24,164 TOTAL RSF



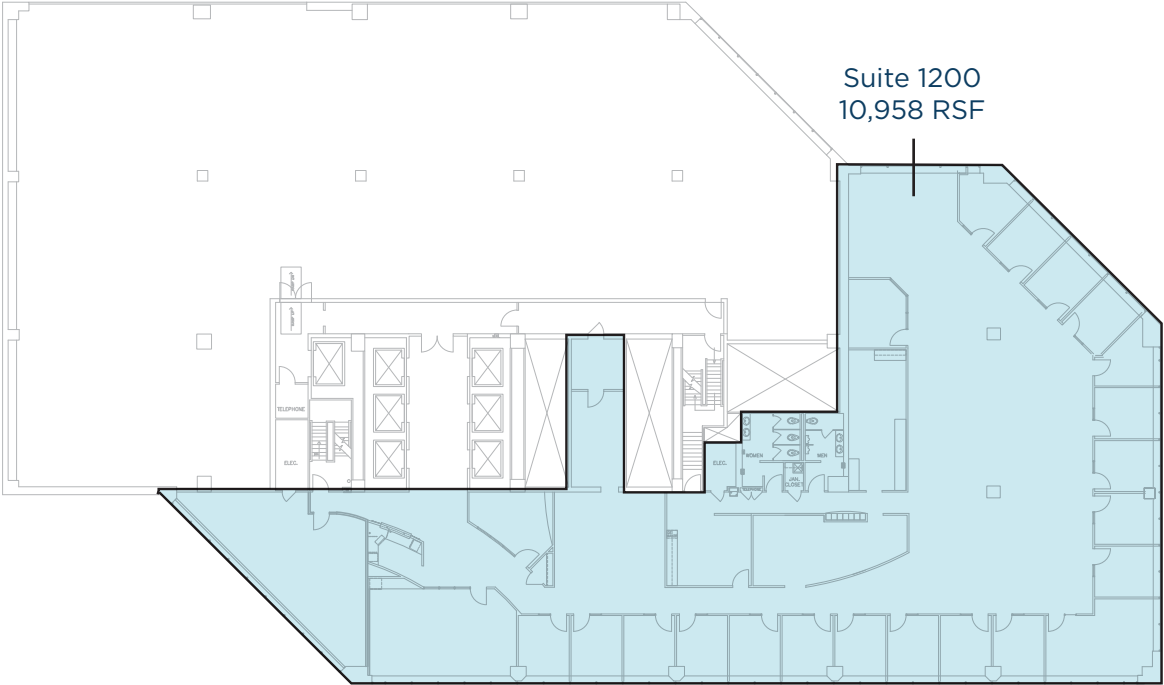
FLOOR 14

- FULL FLOOR AVAILABLE -
23,815 TOTAL RSF



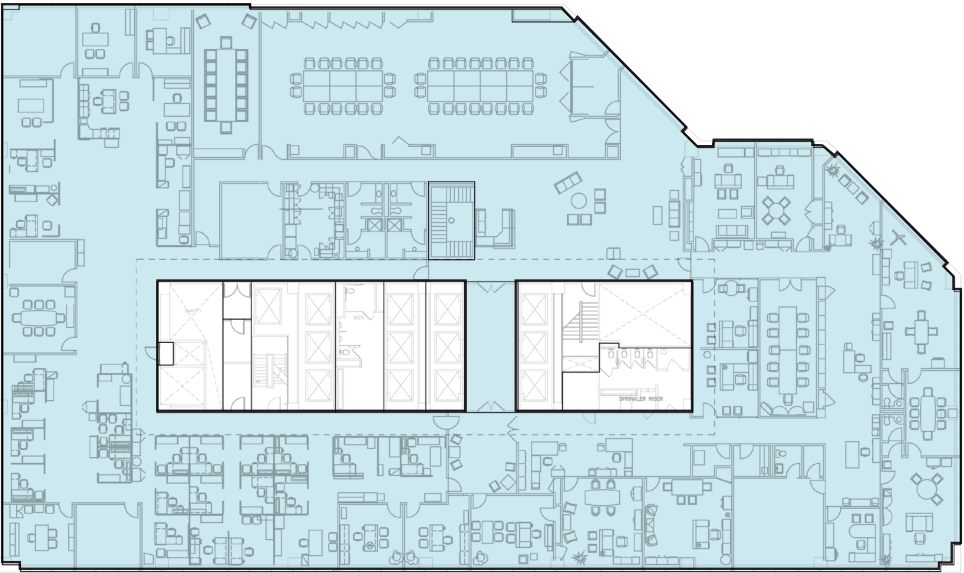
FLOOR 12

10,958 TOTAL RSF AVAILABLE 07/01/2026



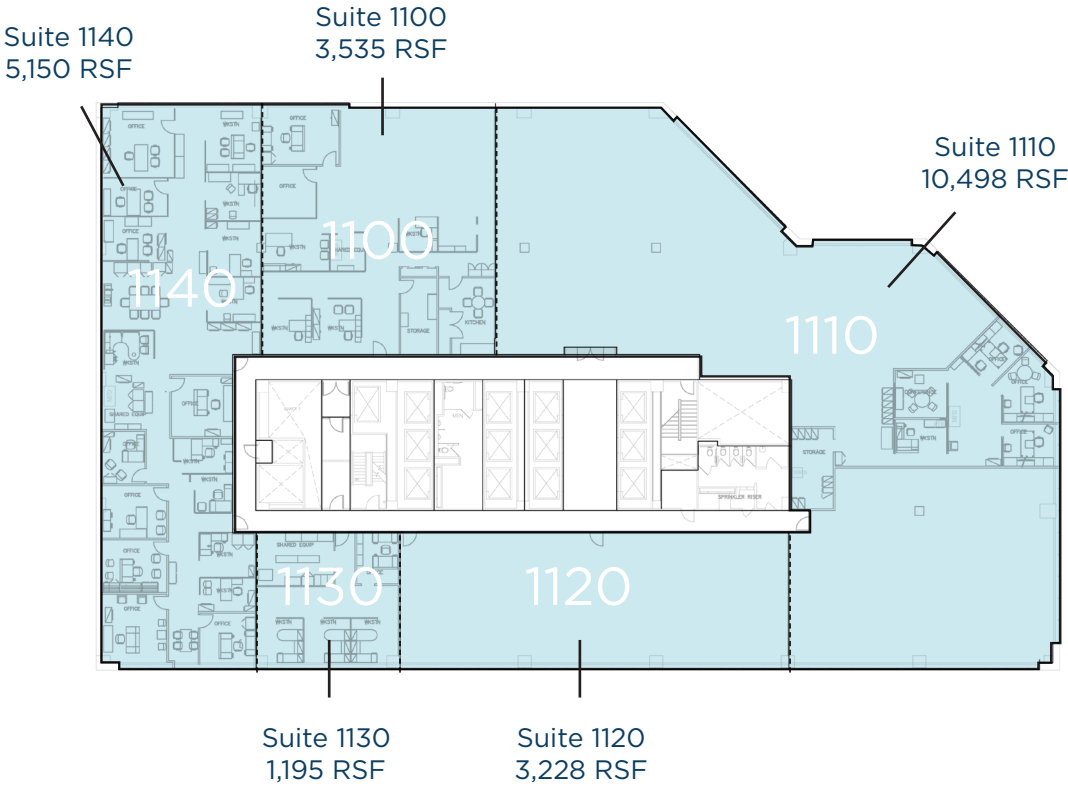
FLOOR 9

- FULL FLOOR AVAILABLE -
24,957 TOTAL RSF



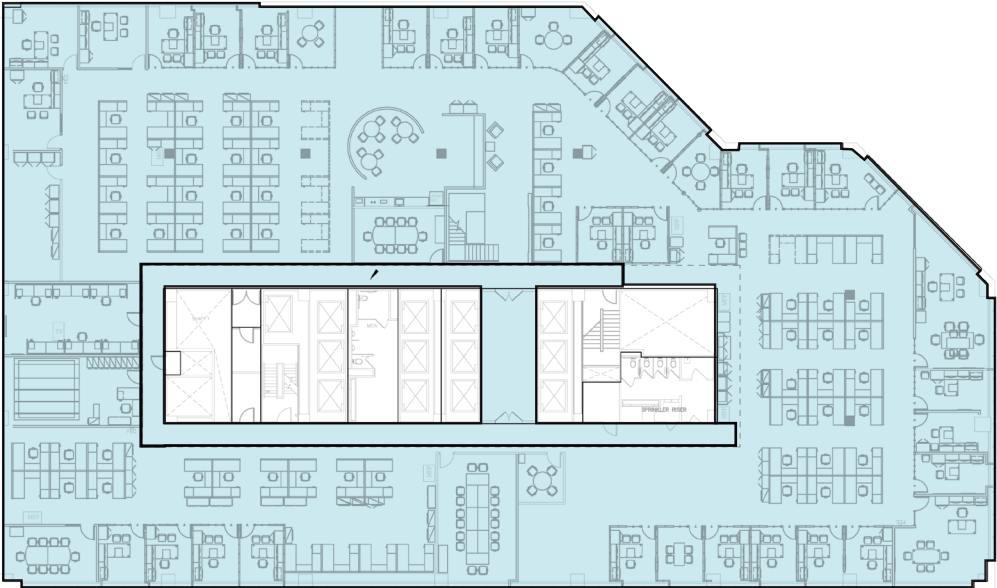
FLOOR 11

- FULL FLOOR AVAILABLE -
TOTAL CONTIGUOUS SPACE: 24,999 RSF



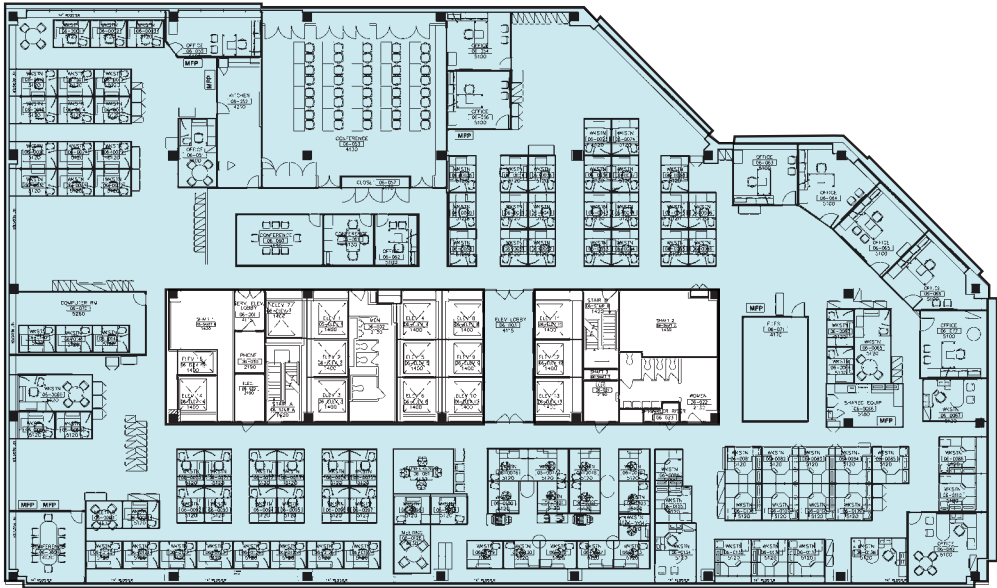
FLOOR 8

- FULL FLOOR AVAILABLE -
24,999 TOTAL RSF



FLOOR 6

- FULL FLOOR AVAILABLE -
24,999 TOTAL RSF



FLOOR 4

- FULL FLOOR AVAILABLE -
27,500 TOTAL RSF



FLOOR 5

- FULL FLOOR AVAILABLE -
27,500 TOTAL RSF



MAKE IT YOUR OWN

The 20th Floor is demo'd and ready to begin construction. Need help with your layout? Contact us today and we can help layout an office "test fit" using our SALTMINE tool. You'll be able to envision your new space in no time!



NEARBY AMENITIES

RESTAURANTS

1.

Chipotle
2.

Bru Burger
3.

Potbelly Sandwich
4.

Graeter's Ice Cream
5.

Green District Salads
6.

McCormick & Schmick's
7.

Sleepy Bee Cafe
8.

D.Burnham's
9.

Starbucks
10.

Morton's Steakhouse
11.

The 1931
12.

Hathaway's Diner
13.

Bagel Stop
14.

Bourbon's Craft Kitchen
15.

Starbucks
16.

Mr. Sushi
17.

Prime Cincinnati
18.

Nada
19.

Boca
20.

Sotto
21.

Igby's
22.

Metropole
23.

The Davidson
24.

Jimmy John's
25.

The Righteous Room
26.

Nicholson's Tavern
27.

Jeff Ruby's
28.

First Watch

HOTELS

1.

The Westin
2.

Renaissance
3.

Hilton Netherland
4.

Hyatt Regency
5.

21c Museum Hotel
6.

The Cincinnati
7.

Hampton Inn & Suites
8.

Homewood Suites

ENTERTAINMENT

1.

Fountain Square
2.

Aronoff Center
3.

21c Museum
4.

Duke Energy Convention
5.

The Banks
6.

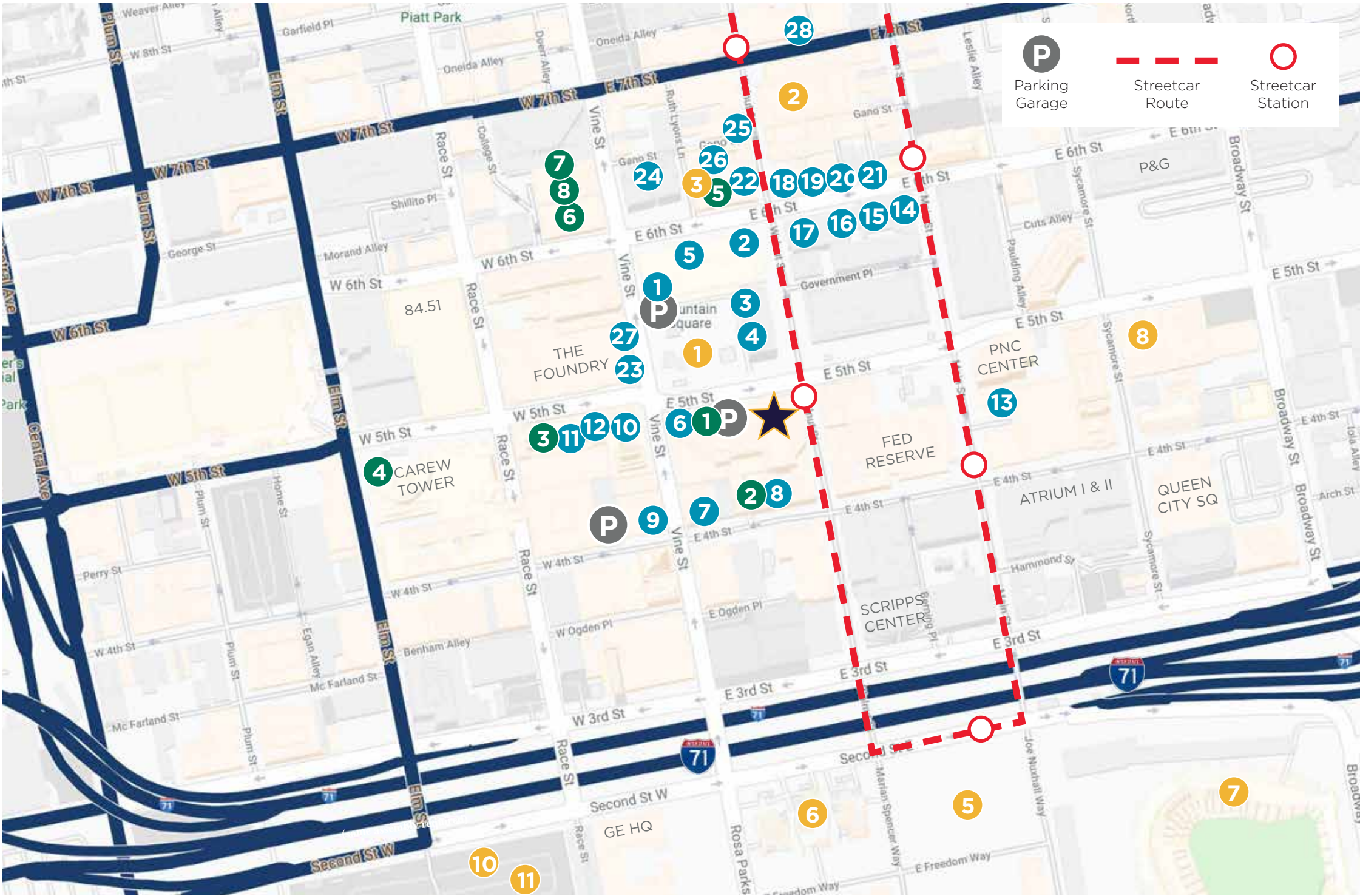
National Underground Railroad
7.

Great American Ball Park
8.

Taft Theatre
9.

Paycor Stadium
10.

ICON Music Center



INSIDE AMENITIES





CONTACT

JOE JANSZEN
SENIOR DIRECTOR
+1 513 549 3011
joe.janszen@cushwake.com

SCOTT ABERNETHY
SENIOR DIRECTOR
+1 513 763 3013
scott.abernethy@cushwake.com

Cushman & Wakefield Copyright 2021. No warranty or representation, express or implied, is made to the accuracy or completeness of the information contained herein, and same is submitted subject to errors, omissions, change of price, rental or other conditions, withdrawal without notice, and to any special listing conditions imposed by the property owner(s). As applicable, we make no representation as to the condition of the property (or properties) in question.

