

CORE5 LOGISTICS CENTER AT CODORUS CREEK

300,472 SF AVAILABLE

600 Busser Road, York, Pennsylvania 17406

Building Area	±300,472 SF	Truck Court	130'
Building Dimensions	1154' x 260'	Auto Parking	±214 Spaces
Building Configuration	Single Load	Trailer Parking	±75 Spaces
Acreage	74.974	Dock Doors	±55 (9' x 10' insulated)
Column Spacing	56' x 50', 60' Speedbay	Drive-in Doors	±2 (14' x 16' ramped)
Clear Height	36'	Fire Protection	ESFR



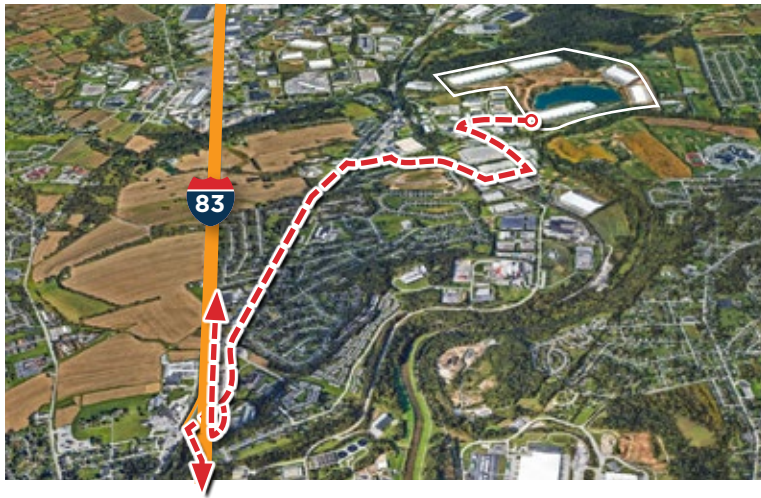
LEASING AGENT



DEVELOPER



I-83, Exit 22	2.8 miles
Route 30	3.1 Miles
York, PA	4.8 Miles
Harrisburg, PA	23 Miles
Lancaster, PA	29 Miles
Baltimore, MD	59 Miles
Philadelphia, PA	101 Miles
Washington DC	99 Miles
New York, NY	189 Miles



Paul Pontius
Vice President Investments
O 717.230.1839
C 267.997.6851
ppontius@c5ip.com



Gerry Blinebury
Executive Vice Chair
O 717.231.7291
gerry.blinebury@cushwake.com

Adam Campbell
Executive Vice Chair
O 717.231.7292
adam.campbell@cushwake.com

Allie Gaeta
Senior Director
O 717.231.7461
allie.gaeta@cushwake.com