

For Lease
3701 Power
Inn Road
Sacramento, CA



±40,790 RSF AVAILABLE

KRIS KALMBACH

Managing Director
916.288.4421
kris.kalmbach@cushwake.com
LIC #1436668

KEVIN PARTINGTON

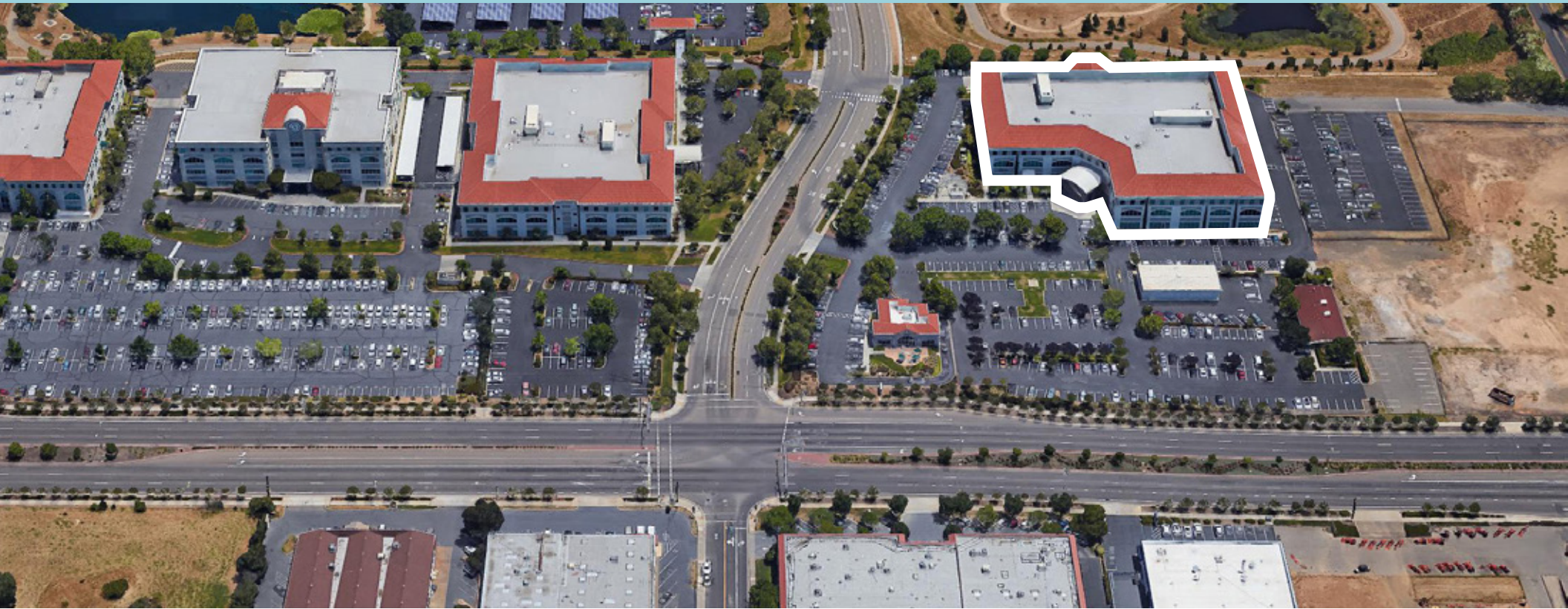
Executive Managing Director
916.288.4807
kevin.partington@cushwake.com
LIC #01199010

JESSI MULJAT

Senior Associate
916.524.9109
jessi.muljat@cushwake.com
LIC #02191822



**CUSHMAN &
WAKEFIELD**



PROPERTY HIGHLIGHTS:

- Up to ±40,790 RSF Available For Lease on the 3rd Floor
- Located adjacent to Sacramento County Probate Court & Family Relations Courthouse
- Adjacent to Starbucks Coffee, Light Rail Station, Hotels, Restaurants, CSUS
- Complementary Shuttle available for access to Light Rail Lot and Courthouse
- Building Security on site
- Building located in Granite Regional Office Park which offers a variety of recreational activities such as a modern skate & dog park, soccer fields, picnic areas, serene lake, lush walkways/trails
- Easy Access to Highway 50 and Howe Avenue interchange

PROPERTY UPDATES | 3RD FLOOR LOBBY

BEFORE

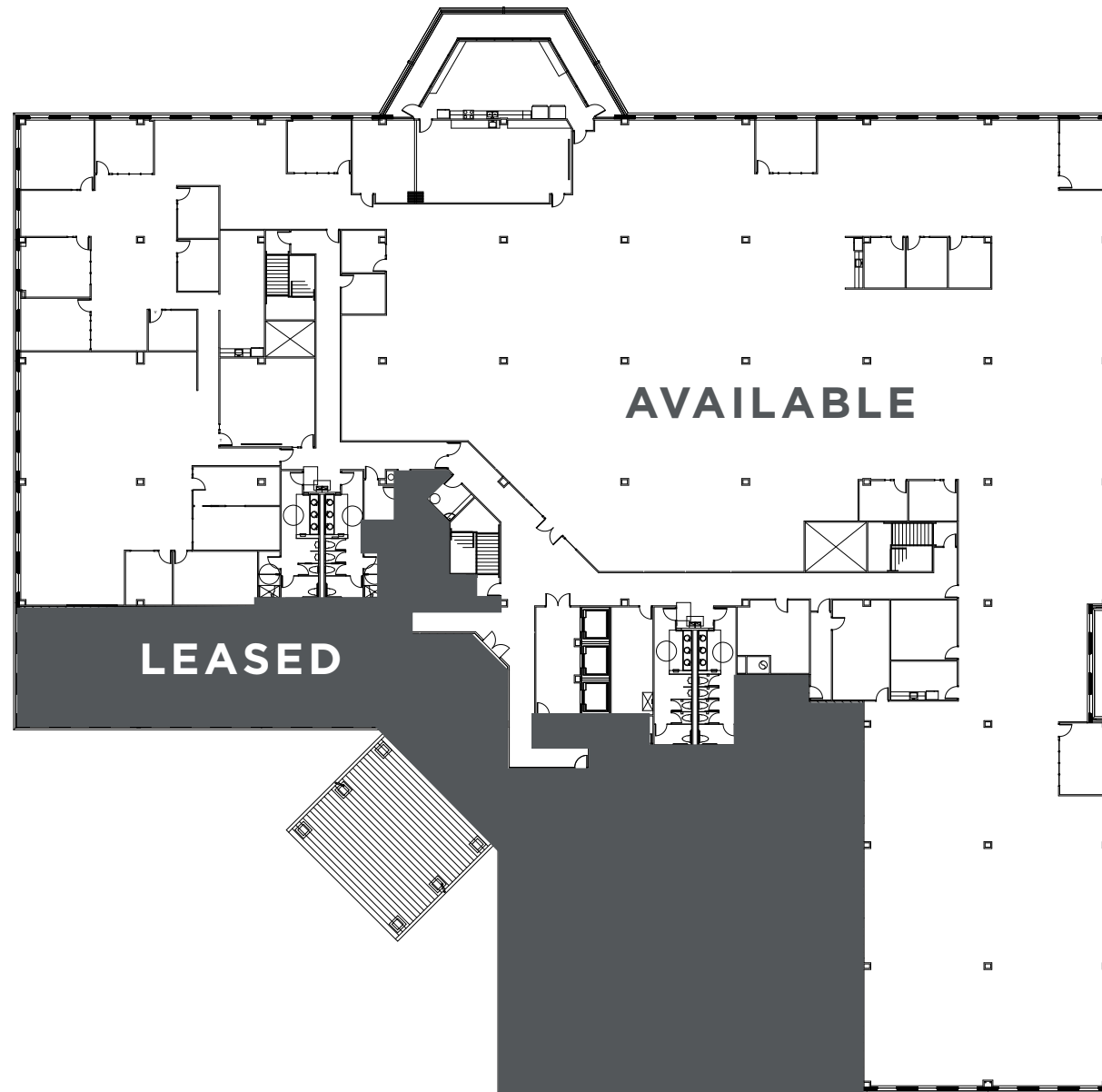


AFTER



THIRD FLOOR:

±40,790 RSF (divisible)

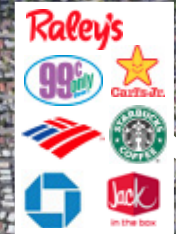


THIRD FLOOR - MULTI-TENANT OPTION:





California State University
Sacramento



Folsom Blvd.



Granite
Reginal Park

65th St.



3701 Power Inn Road

LOCATION

Power Inn Rd.



24 MIN

SACRAMENTO
INTERNATIONAL AIRPORT



15 MINS

SACRAMENTO CENTRAL
BUSINESS DISTRICT

For Lease

3701

**Power
Inn Road**
Sacramento, CA



©2024 Cushman & Wakefield. All rights reserved. The information contained in this communication is strictly confidential. This information has been obtained from sources believed to be reliable but has not been verified. No warranty or representation, express or implied, is made as to the condition of the property (or properties) referenced herein or as to the accuracy or completeness of the information contained herein, and same is submitted subject to errors, omissions, change of price, rental or other conditions, withdrawal without notice, and to any special listing conditions imposed by the property owner(s). Any projections, opinions or estimates are subject to uncertainty and do not signify current or future property performance.

KRIS KALMBACH

Managing Director
916.288.4421
kris.kalmbach@cushwake.com
LIC #1436668

KEVIN PARTINGTON

Executive Managing Director
916.288.4807
kevin.partington@cushwake.com
LIC #01199010

JESSI MULJAT

Senior Associate
916.524.9109
jessi.muljat@cushwake.com
LIC #02191822

